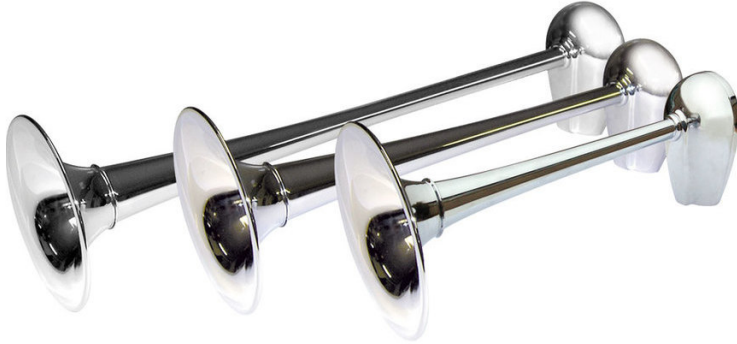




PW2-3BC 3 chromed whistles 12/50 m, ø200 with compressor

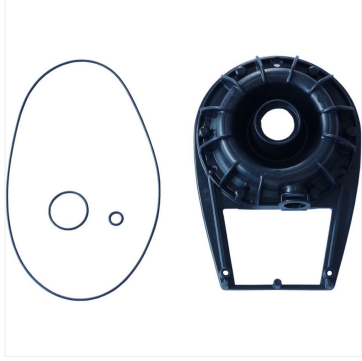


Quick Overview

Sets of approved chromed horns. New design. Complete with integrated electric valves, mounting accessories and 8 bar compressor. For compressed air operation 6/12 bar. Meets COLREG 1972 IMO class IV regulations. Approvals: RINA, LLOYD'S REGISTER MCA, BUREAU VERITAS, BSH and NMMA.

Part n.	Name	Voltage (V)	Hz	dB (1/3 oct) (1m)	Dimensions (mm)
15000512	PW2-3BC	12	220-315-175	126	570x600x207
15000513	PW2-3BC	24	220-315-175	126	570x600x207

Ricambi



R5000040



R5000006

Accessori



RT6/4 Nylon tubing $\varnothing 6/4$ or $\varnothing 8/6$