



" It takes time to create, that's why we spent hundreds of hours engineering our new fender profile"

About OUR **Qbe**

We refined the square shaped contemporary design of our **Qbe** fender before we got it right.

The result is a unique adaptable fender that works in any setting for both boxed and sandwich junctions boats:

heavy duty shock absorbing system for ultimate protection makes **Qbe** ideal for recreational, commercial and military boats as well

Qbe

Brand-New

**RUB RAIL BY TESSILMARE
PAT.PEND.**

WHY **Qbe** ?

It fits both boxed and sandwich junctions!

The dual-use rub rail helps you drastically reduce stock and standardize your design.

Excellent results in heavy duty conditions, thanks to the robust supporting structure and the steel bar ensuring the fender is constantly and firmly held.



Phone:

+39 039 921571

Website:

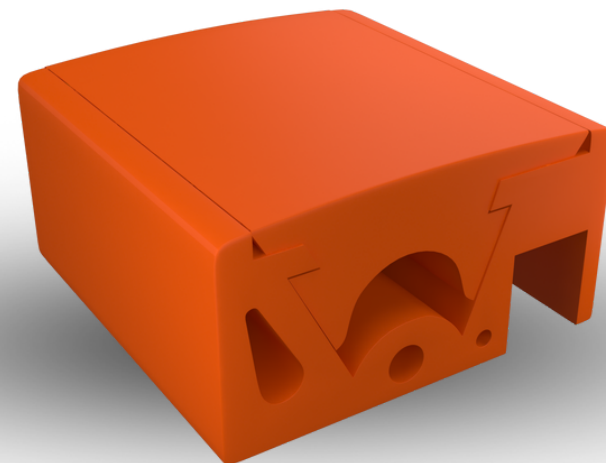
WWW.RUBRAILS-TESSILMARE.COM

Email:

INFO@TESSILMARE.COM

Address:

VIA VITTORIO VENETO, 15
23896 BEVERA DI SIRTORI (LC) ITALY



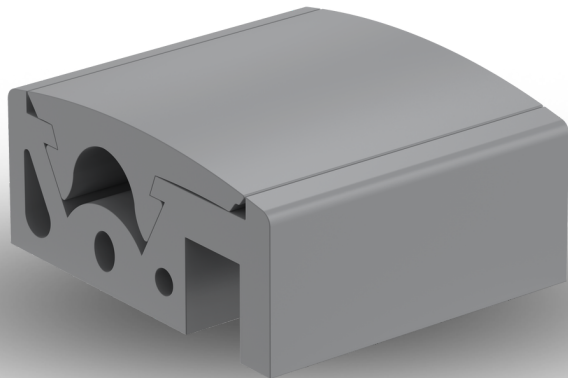
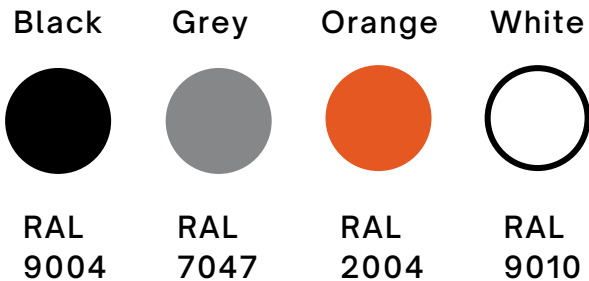
WWW.RUBRAILS-TESSILMARE.COM

The Materials

Qbe top notch PVC material for marine use prevents annoying marks on any surfaces;

Qbe flexible components enable to follow the shape of the boat.

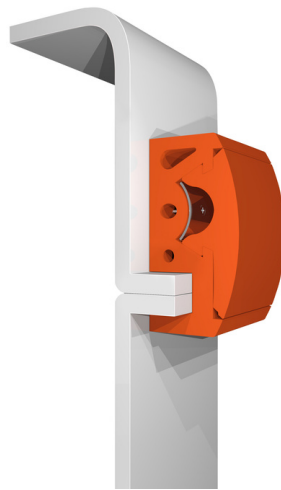
That's why the well-fitting, never failing **Qbe** profile will render almost all others redundant.



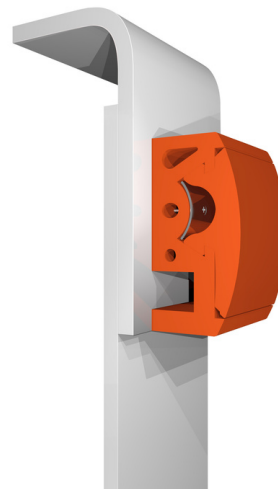
The Features

- Square shaped contemporary Tessilmare design
- Black, white, grey, orange, specific colours on request
- Tessilmare patent pending
- Ideal for both boxed and sandwich junctions

Sandwich
Junction



Boxed
Junction



The Benefits

Fast setting up: less time and lower installation costs thanks to the limited number of components and simplicity of fixing.

Available in custom-cut reels to cut down on waste thus reducing costs.

Reduced chances to accidentally find hull-deck joining screws during installation

The flowing harmony of its attractive aesthetics, minimalism and technology make **Qbe** (patent pending) a unique product offering TESSILMARE uncompromising quality and demonstrated durability



TESSILMARE[®]

Our drive is to support a passion which is shared