

Quick Lock System

316-grade stainless steel sockets and quick connect accessories. From the smallest model for attaching fenders and ropes to larger models with high load capacity. The largest model can be combined with stainless steel or carbon stanchions.



Finish Polished or Satin Stainless Steel

Features Flush design, High load capacity, Watertight, No drains required, Easy installation, Low maintenance, CNC machined, Dyneema® fabric, CNC titanium on request



Dyneema® soft eyelet

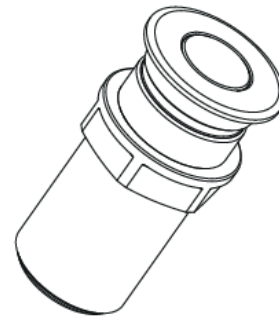


Male plug - threaded

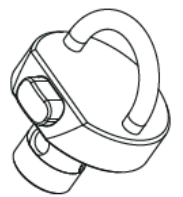


Stanchion option

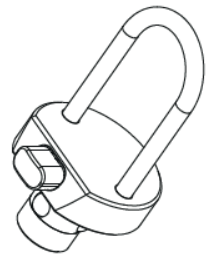
Code	Type	A(mm)	B(mm)	C(mm)	Working Load (daN)
IC-Q2601SS	Socket M26	57	M26x1.5	34	-
IC-Q2621SS	Soft padeye	12	38	-	400
IC-Q2631SS	M4 threaded head	12	38	-	500
IC-Q3201SS	Socket M32	72	M32x1.5	40	-
IC-Q3211SS	Padeye	13	49	7	1500
IC-Q3221SS	Soft padeye	13	49	-	1200
IC-Q3231SS	M6 threaded head	13	49	-	1500
IC-Q4501SS	Socket M45	86	M45x1.5	54	-
IC-Q4521SS	Soft Padeye	18	54	-	2000
IC-Q4531SS	M8 threaded head	18	54	-	2500
IC-Q5201SS	Socket M52	93	M52x1.5	66	-
IC-Q5211SS	Padeye	22	68	-	3000
IC-Q5221SS	Soft padeye	22	68	-	2500
IC-Q5231SS	M8 threaded head	22	68	-	3000



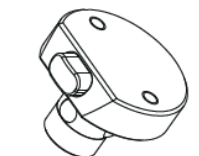
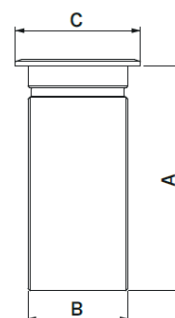
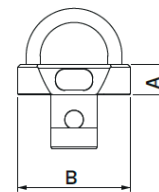
socket



padeye



soft padeye



threaded head