



FLATWASH

Quality deck shower



WATERPROOF
HOUSING



CHROME-PLATED
BRASS



RETRACTABLE
DESIGN

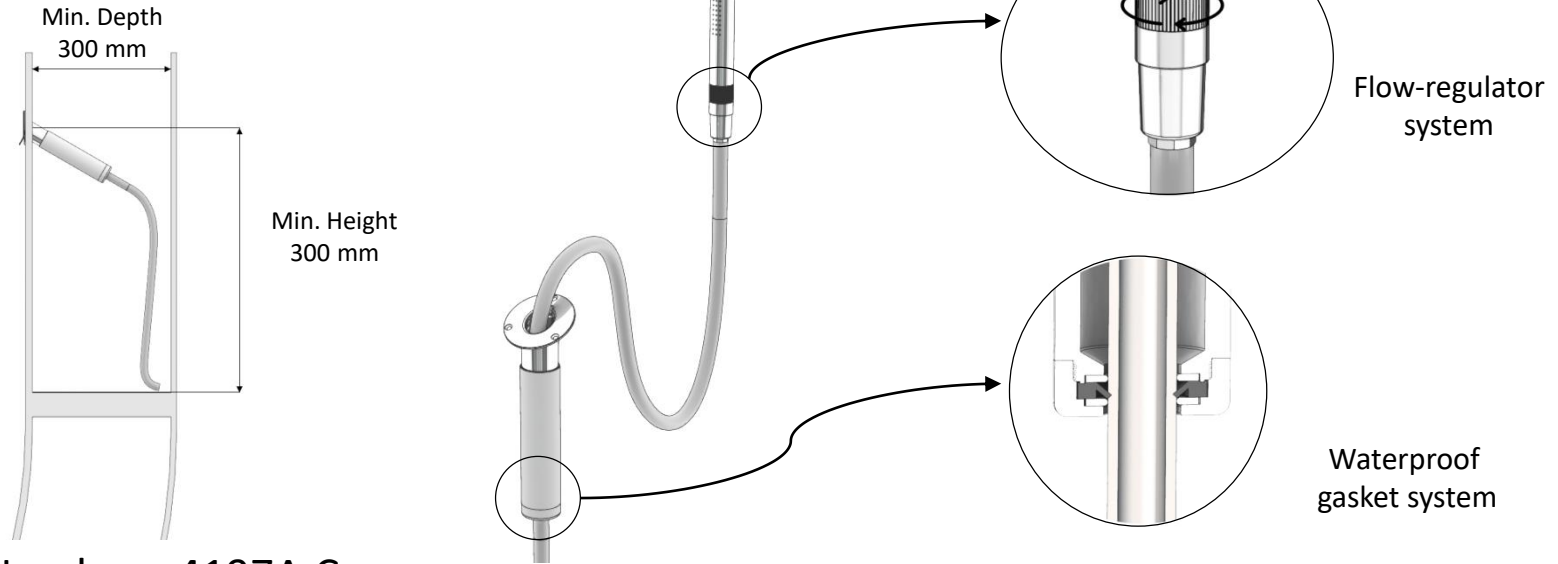
FORESTI & SUARDI
DESIGN®



Description



- Retractable pull-out hand-shower in chrome-plated brass;
- Innovative and neat design which does not invade the elegant lines of the deck.
- Ceramic flow regulator system that ensures smooth and long-lasting performances.
- Designed for quick and easy installation on flat or slightly curved surfaces, both horizontal or vertical.
- Entirely made of chromed brass;
- The housing base is equipped with an innovative system with lip gaskets to ensure a complete waterproofing, even during normal use;
- Available in two versions, with and without integrated flow control;
- Progressive mixer and AISI 316L stainless steel plate available as accessory.

Technical Features





- Part Number: 4197A.C
- Installation spot: Flat or slightly curved surfaces, both horizontal or vertical.
- Innovation: Waterproof housing base during use and storage of the hand-shower; Integrated flow regulation.
- Materials: Hand-shower entirely made of chromed-brass. Ceramic flow-regulation system. Viton gaskets.

Models

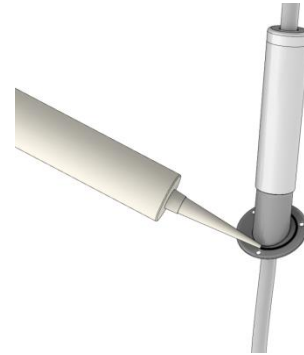
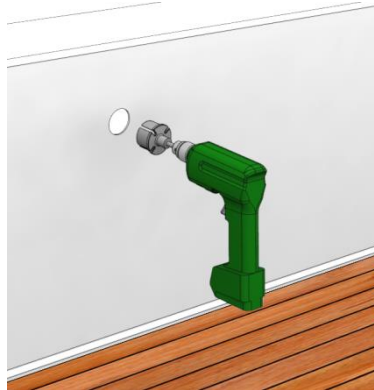
Code	Description	Materials	Details	Image
4197A	Hand-shower with flow regulator	Chromed-brass	<ul style="list-style-type: none">- 2,5 m long hose- $\frac{3}{8}$" threaded inlet	 A chrome hand-shower with a flow regulator, attached to a 2.5m long hose. The shower head has multiple spray nozzles and a central control knob.
4197B	Hand-shower without flow regulator	Chromed-brass	<ul style="list-style-type: none">- 2,5 m long hose- $\frac{3}{8}$" threaded inlet	 A chrome hand-shower without a flow regulator, attached to a 2.5m long hose. The shower head has multiple spray nozzles and a standard threaded inlet.

Accessories

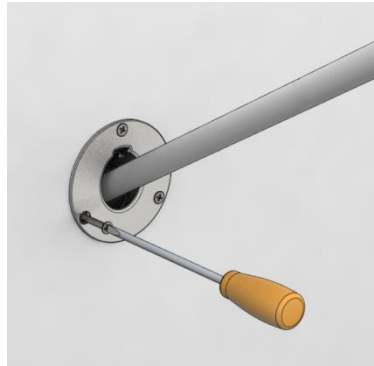
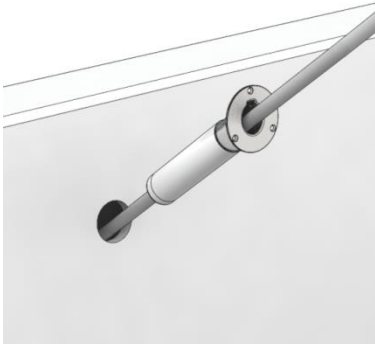
Code	Description	Materials	Details	Image
4198	Hot/Cold water mixer	Chromed-brass	1/2" threaded inlet	
4199	Aesthetic plate for housing	Stainless steel AISI-316L	Screw mounting	

Installation

- Choose a suitable spot to install the shower.
- Drill a circular hole with a diameter of 50 mm where the shower has to be installed.
- Place sealant on the back plate of the housing base



- Place the housing base through the hole.
- Install the housing base by tightening the 3 screws (not included).
- Connect the tubing to the 1/2 " threaded inlet of the hose supplied.



Instruction of use

- Pull-out the hand-shower from its housing.
- Rotate the ring nut to regulate the water flow.
- Rotate the ring nut to stop the water flow and then put the hand-shower back in its housing till complete closing.





FORESTI & SUARDI
DESIGN®