



Electric Seat Pedestal

£2,645.76

Excl. Tax: £2,204.80

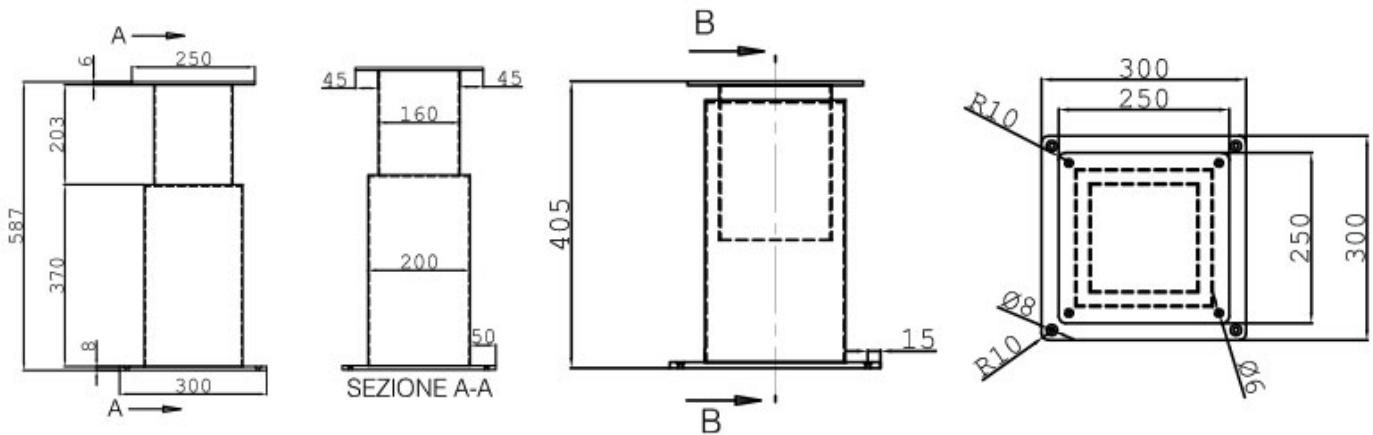
Product Images



Short Description

An electric seat pedestal comprising of two square sections made of 316-grade, mirror polished, stainless steel

Description



Additional Information

Top Plate (mm)	250 x 250
Base (mm)	300 x 300
Max. Height (mm)	587.00
Min. Height (mm)	405.00
Max. Lifting Capacity (kg)	200.00
Input Voltage	24Vdc
Finish	316 Stainless Steel
Manufacturer	Atep

