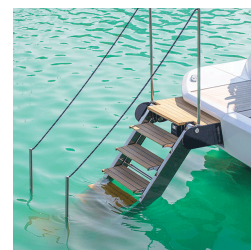




# LaScala - Electric Bathing Ladder Gangway

## Product Images





## Short Description

---

A new concept and an excellent alternative to the traditional hydraulic automatic bathing ladder. LaScala is an all-electric bathing ladder with self-levelling steps. The system offers some considerable advantages over a hydraulic unit.

- **Environmentally friendly** - no hydraulic oil and a large reduction in the use of polluting materials such as plastic and rubber
- **Lightweight** - not only is the actual gangway unit lighter than an hydraulic equivalent but there is also no requirement for a power pack and associated hoses etc which saves around 30kg
- **Energy efficient** - Removal of the power pack also offers a reduction in energy consumption. LaScala's electronic control system has also been optimised to use less current than a standard gangway
- **Quiet operation** - the electric system is very quiet without the usual hum or reverberation of a powerpack
- **Plug & Play** - LaScala is quicker and easier to install when compared to a hydraulic equivalent ladder

## Description

---





Choosing **LaScala** means that there is no hydraulic power pack and therefore there is no oil system present. Furthermore, the use of potentially polluting materials such as plastic or rubber, especially with regards to pipework.

**LaScala** can help to reduce the amount of energy used on board thanks again to the lack of a hydraulic power pack. The energy usage is always optimised thanks to the specially design circuit board and less current is required to operate the ladder when compared to a hydraulic equivalent. Excessive strain on the vessel and the system is avoided. **LaScala** can be operated on 12Vdc or 24Vdc.

**LaScala** is a revolutionary fully electric ladder which is lighter, more efficient, quieter and more environmentally friendly when compared to a hydraulic equivalent system.



### **Lightweight**

**LaScala** weighs less than a hydraulic equivalent product thanks in the main part to the lack of a power pack. On average it weighs 30kg less than a traditional automatic ladder.

In addition, there is a considerable space saving to be had by choosing **LaScala** once again thanks to the absence of a powerpack. The engine room can be more neatly packaged and more space potentially can be given to accommodation.

### **Plug & Play**

Easy and quick to install, **LaScala** is a very simple system which offers a straightforward set up.





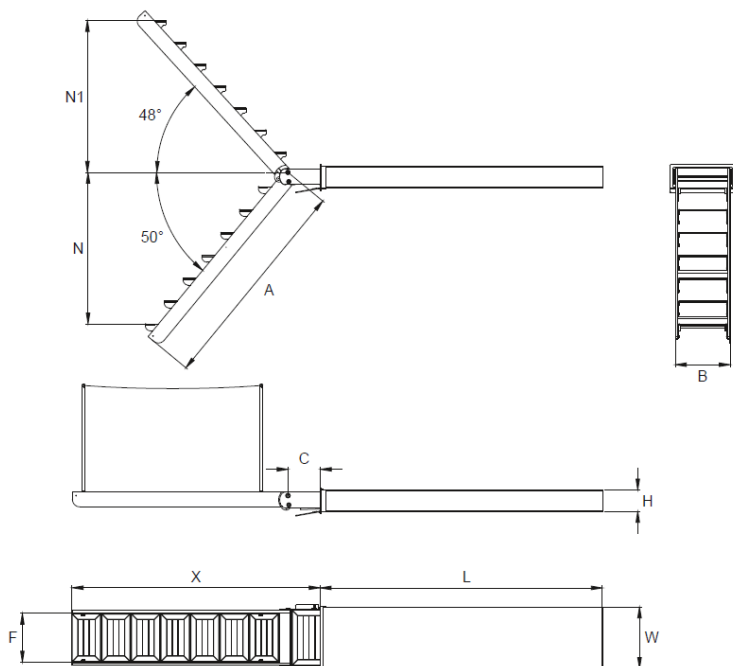
## Custom Solutions

The Besenzoni custom department can look into adapting **LaScala** to suit any boat builder's needs. For example, aesthetic changes can be made such as using synthetic decking for the walkway treads or finishing in a particular RAL powder coated finish. Larger changes such as dimensional modifications can also be considered for production runs.

## Standard Specification

- Electric multifunction ladder with combined with gangway function
- 12/24 voltage
- Pre-wired system with n. 2 electric motors
- Soft start management on all three movements
- Slowdown and PWM control during the search for the horizontal centering position for better precision in the re-enter and exit phase
- Double tubular structure made in polished or powder coated stainless steel with covers (polished or painted)
- Self-levelling steps made with:
  - teak with non-slip inserts
  - carbon
  - 100% ecological UV stabilized PVC synthetic material
- Standard length of electrical cables from the bottom of the Box L = 1.5 MT
- Mounting brackets included
- Aluminium housing box with automatic lid
- Box not watertight
- Manual removable stanchions with rope or stainless steel handrail
- Operation with radio wave remote control and touchpad panel to operate from the cockpit
- Overall dimensions of the electronic control unit 280x170xH = 100 mm with radio antenna integrated in the system (compatible with radio remote control 6CS99047)
- One person at a time capacity
- Optional: operation via smartphone by downloading the Besenzoni Control Device APP and installing the BUC White control unit.





	5+1 steps	6+1 steps	7+1 steps
<b>A</b> mm	1370	1640	1910
<b>B</b> mm	510	510	510
<b>C</b> mm	355	355	355
<b>F</b> mm	425	425	425
<b>H</b> mm	195	195	195
<b>L</b> mm	2030	2300	2570
<b>N</b> mm	960	1160	1370
<b>N1</b> mm	995	1200	1400
<b>X</b> mm	1725	1995	2265
<b>W</b> mm	560	560	560
<b>α</b> (°)	48	48	48
<b>β</b> (°)	50	50	50
<b>Weight</b> kg	170	190	215

***LaScala** can also be operated using your smartphone via a Bluetooth connection. Just simply specify **LaScala** with the **BUC** White Bluetooth control unit and download the Besenzoni Control Device App.*



## Additional Information

Manufacturer

Besenzoni

