

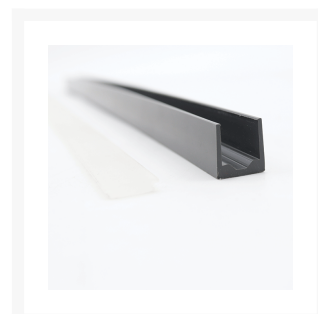


Walk-on Plastic Extrusion For Neon LED Strip

£39.67

Excl. Tax: £33.06

Product Images



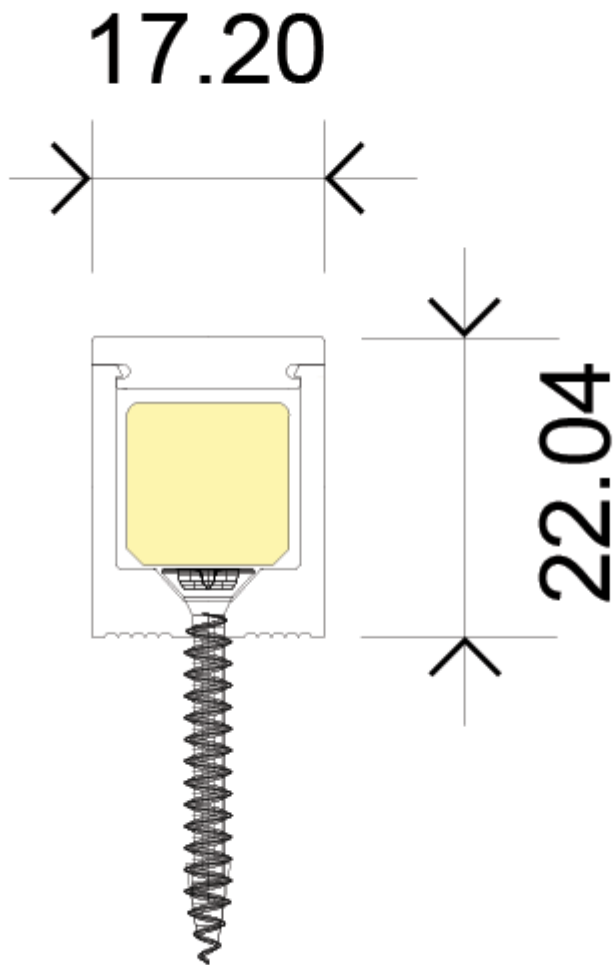
Short Description

An extruded PVC profile with snap-in top lens for LED strip lighting. This product has been specifically designed for in-ground installation and can be safely walked on. The top lens is 4mm thick and protects the LED strip inside from damage. The product has been designed for use together with our [12mm x 12mm silicone neon flexible strip](#) and can therefore be used in wet locations as well as dry ones.

A carefully designed channel within the PVC grey base extrusion allows a #6 3.5mm self-tapping screw to be countersunk within the channel body, not affecting the fitment of the neon inside.

This profile is priced per length (2m).

Description



Dimensions

The T504 PVC extrusion is designed to house our 12mm x 12mm silicone neon top view. The profile itself is compact but offers essential protection of the strip inside thanks to its 4mm thick snap-in frosted lens. A centre line channel provides ample space to countersink any screw heads used to secure the extrusion.

Additional Information

Weight (kg)	0.400000
Lens Type	Opal
Material	PVC
Depth (mm)	22.04
Dimmer	No
Finish	Grey

