



# Silicone Flexible Neon LED Strip IP68 - Top View - 16x15mm

## Product Images



## Short Description

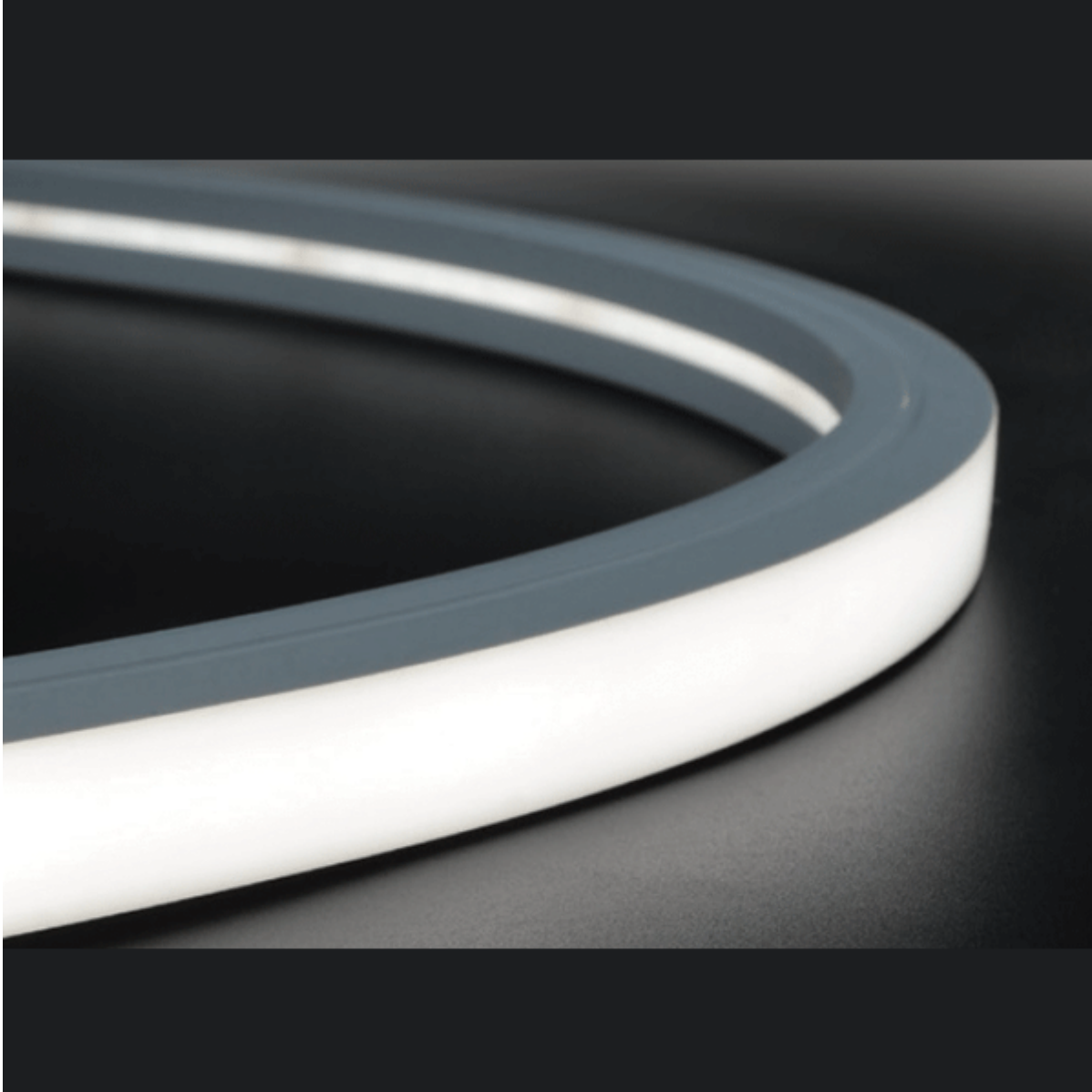
Silicone flexible neon LED strip with constant voltage chip technology.

This LED neon is made from Dow Chemical SILASTIC™ ET-7021 silicone rubber which has excellent light transmitting characteristics and is very strong. The strip LED emits a seamless light with no dots or shadowing. It is also IP68 rated and resistant to salt, weak acid and alkali corrosion, corrosive gases and UV damage. Importantly, the product is chlorine resistant meaning that it can be used underwater in swimming pool environments.

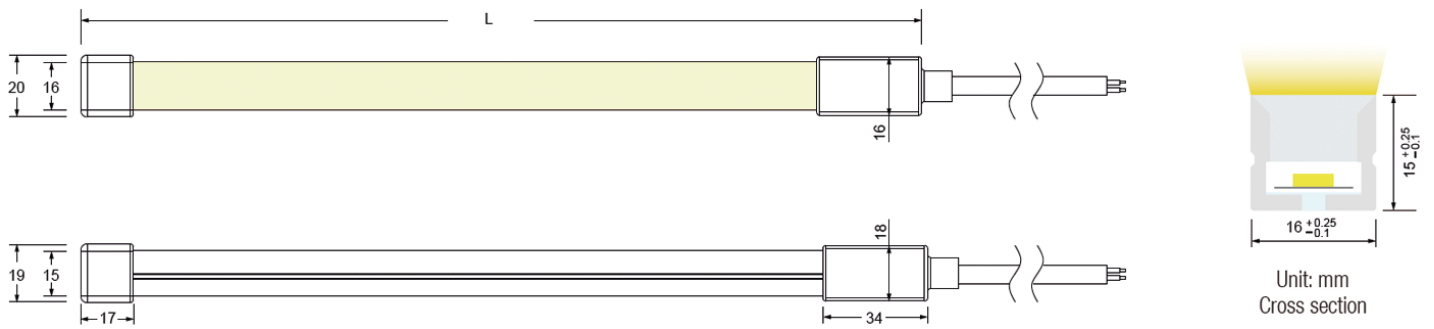
The strip can be ordered to custom lengths with factory fitted IP68 end connectors for a plug and play installation.

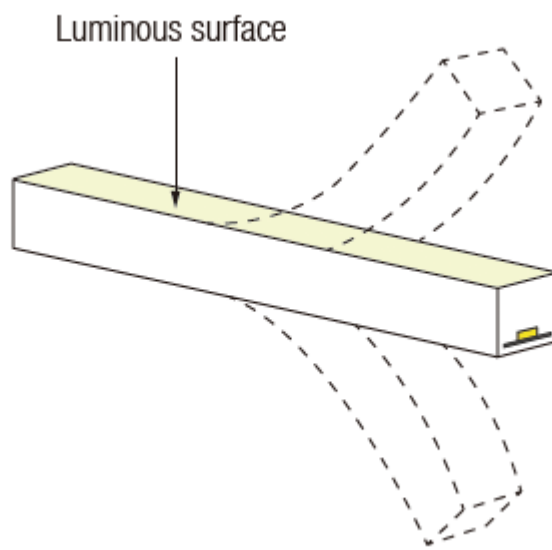
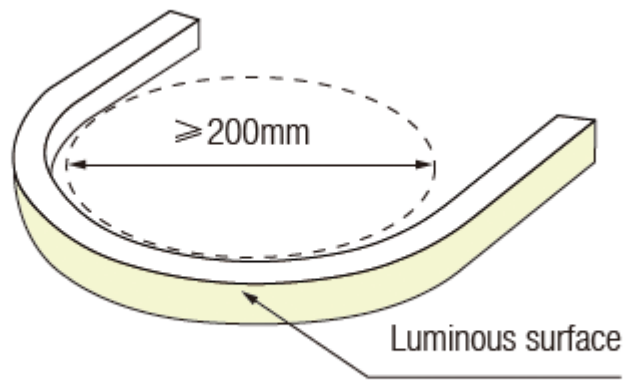
## Description

---



## Dimensions




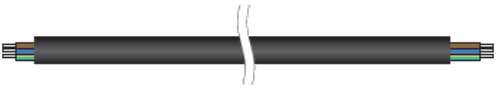
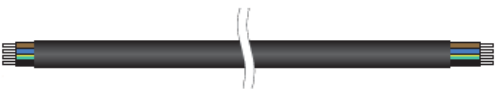


## Specification

Voltage	LED Pin Temperature	Storage Temperature	Ambient Working Temperature	CRI
DC24V	Max. 65°C	-25°C - 60°C	Min. -25°C Max. 45°C	>90

Power (W/m)	Efficiency (lm/W @4000K)	Max. Run Length (Powered from Single End)
10	41.0	10 (CV)

# Cable Type

Cable Type	Image	Specification	Core	Description
Rubber		OD 6.3mm	2	Brown V+ Blue V-
Rubber		OD 6.8mm	3	Dual White: Brown V+, Blue White-, Yellow/Green White-
Rubber		OD 7.5mm	4	RGB: Brown V+, Blue Blue-, Yellow/Green Green-, Black Red-







## Single Colour

CCT	CRI	Voltage (DC)	Power (W)	Lumen (lm/m)	Efficiency (lm/w)	Unit Length (mm)	Max. Run Length* (m)
2400K±150	>90	DC24V	10	370	37	50	10
2600K±150	>90	DC24V	10	370	37	50	10
3000K±150	>90	DC24V	10	375	37.5	50	10
4000K±300	>90	DC24V	10	410	41	50	10
6100K±400	>90	DC24V	10	375	37.5	50	10
Red	-	DC24V	10	174	17.4	50	10

Green	-	DC24V	10	489	48.9	50	10
Blue	-	DC24V	10	89	8.9	50	10
Yellow	-	DC24V	10	178	17.8	50	10
Orange	-	DC24V	10	184	18.4	50	10
Pink	-	DC24V	10	437	43.7	50	10

\*Max. run figure is a single length powered from one end. If powered from both ends, this length can be doubled.

## Tuneable White

CCT	CRI	Voltage (DC)	Power (W)	Lumen (lm/m)	Efficiency (lm/m)	Unit Length	Max. Run* (m)
2600K±150	>90	DC24V	5	200	40	62.5	5
6100K±400	>90	DC24V	5	210	42	62.5	5
3900K±300	>90	DC24V	10	410	41	62.5	5

## RGB

CCT	CRI	Voltage (DC)	Power (W)	Lumen (lm/m)	Efficiency (lm/m)	Unit Length	Max. Run* (m)
Red	-	DC24V	3.3	54.45	16.5	83.33	5
Green	-	DC24V	3.3	201.3	61	83.33	5
Blue	-	DC24V	3.3	39.6	12	83.33	5
RGB	-	DC24V	10	295	29.5	83.33	5

\*Max. run figure is a single length powered from one end. If powered from both ends, this length can be doubled.

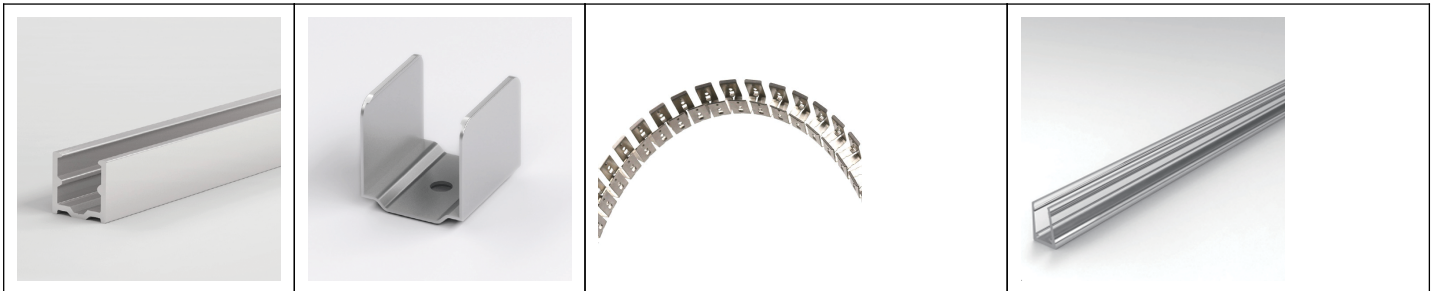
## Factory-fit IP68 End Connectors

In order to preserve the IP68 underwater rating of the neon strip, the end connections are produced at the factory and delivered ready to plug and play. No DIY option is available for this underwater rated IP68 product.

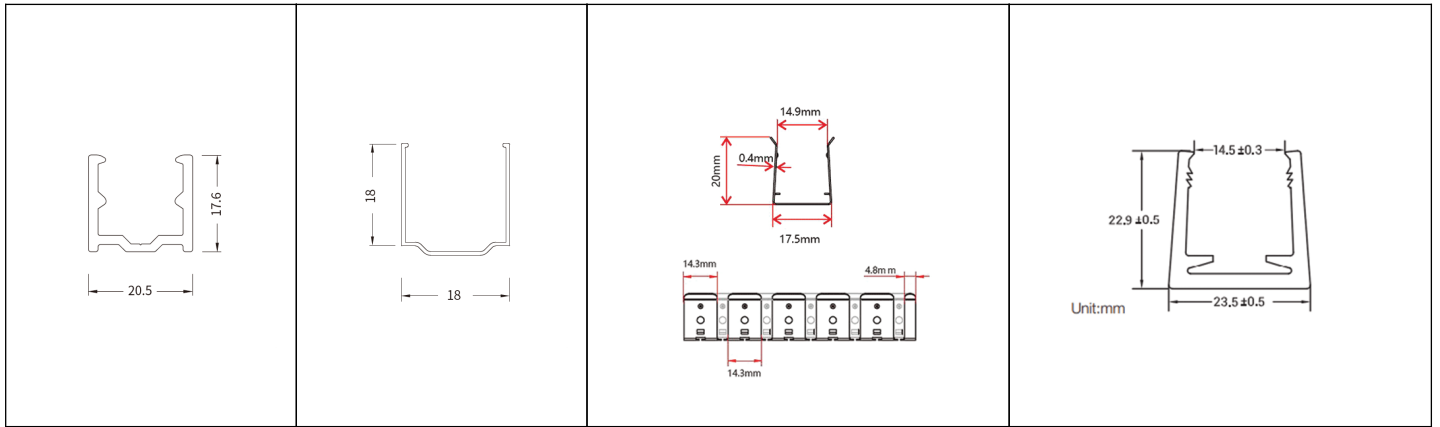


## Installation

The LED profile can be inserted into various mounting channels or clips for a clean and durable installation.







## Additional Information

Weight (kg)	0.400000
Light Element Type	SMD LED
Material	Silicone
Lens Angle	120°
Width (mm)	16.00
Height (mm)	15.00
Wattage	10W / Metre
Input Voltage	24Vdc
IP Rating	IP68
Dimmer	Yes
CRI	>90
Cutting Intervals (mm)	50.00
Luminous Flux (lm/M)	370 - 410
Operating Temperature Range (°C)	-25° - +45°C
Strip LED Type	Flexible Neon

