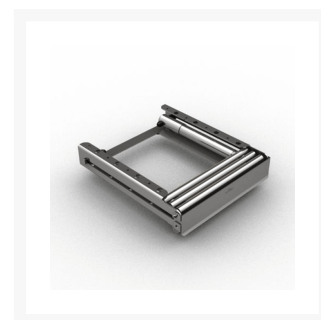




2203 Series Telescopic Ladder

From
£595.82
Excl. Tax: £496.52

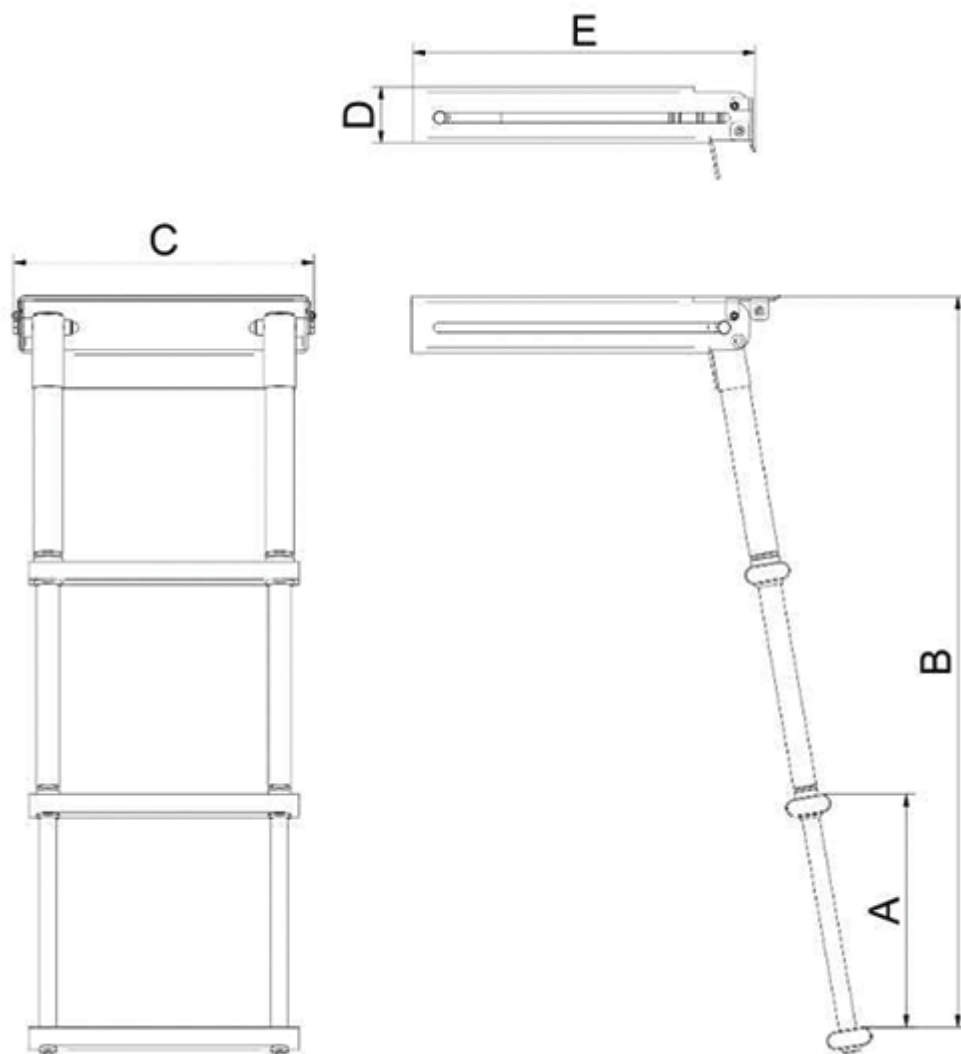
Product Images



Short Description

The 2203 is a under-platform telescopic ladder made from mirror polished, 316-grade, stainless steel. 2203 is available three and four steps, four widths with two tread options. This ladder also features a locking lid to ensure that it cannot be deployed when not in use.

Description



Part Number	A	B	C	D	E	Steps
2203.01.275.3.SS	255	805	275	60	375	3 steps with brown non-slip treads
2203.02.275.3.SS	255	805	275	60	375	3 steps with grey non-slip treads
2203.01.330.3.SS	255	805	330	60	375	3 steps with brown non-slip treads
2203.02.330.3.SS	255	805	330	60	375	3 steps with grey non-slip treads

2203.01.335.4.SS	255	1060	335	60	395	4 steps with brown non-slip treads
2203.02.335.4.SS	255	1060	335	60	395	4 steps with grey non-slip treads
2203.01.435.4.SS	355	1455	435	60	495	4 steps with brown non-slip treads
2203.02.435.4.SS	355	1455	435	60	495	4 steps with grey non-slip treads

all measurements in mm

Additional Information

Folded Height (mm)	60.00
Operation Type	Manual
Weight (kg)	7.000000

Product Options

Finish:	316 Stainless Steel with Grey Non-Slip Tread
	316 Stainless Steel with Brown Non-Slip Tread
Number of Steps:	3 Step
	4 Step
Width (mm):	275.00
	330.00
	335.00
	435.00

