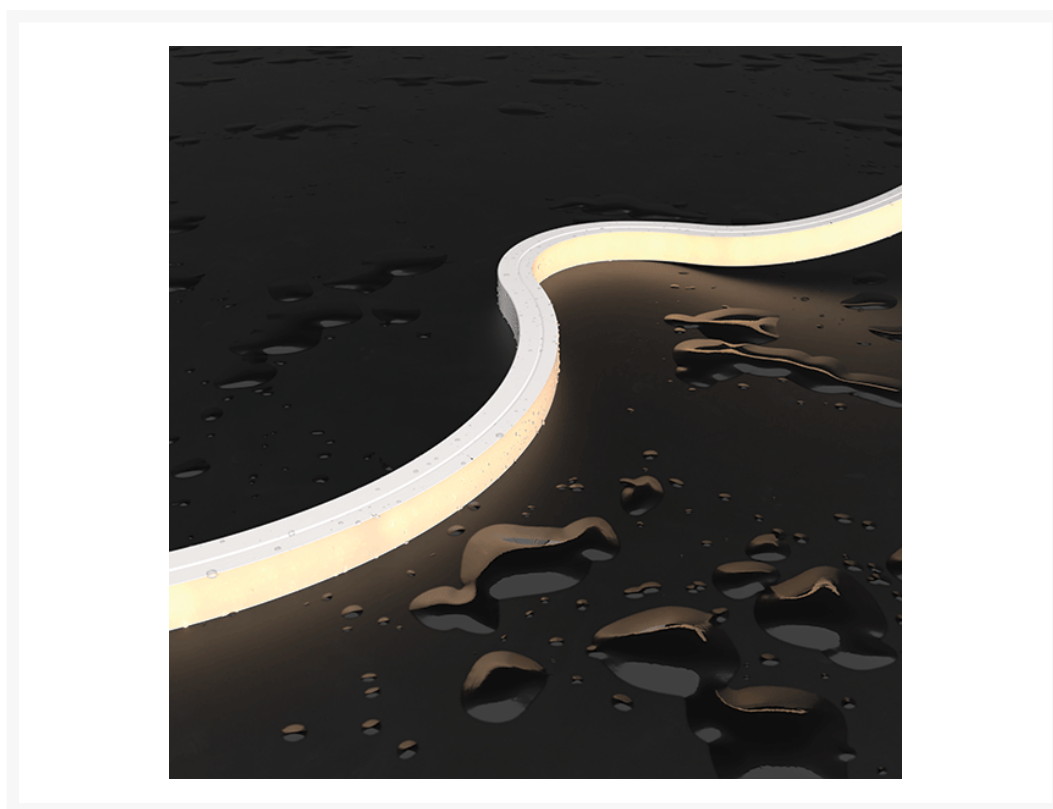




# Silicone Free-cut 3D Bend Neon Flex LED Strip - 10mm x 10mm

From  
**£165.42**  
Excl. Tax: £137.85

## Product Images



## Short Description

Neon effect LED strip light with single colour output and innovative 3D bend capability with free-cut technology. Sold online in 5 metre reels.

- IP67 rated casing with injection moulded connectors and end caps or various DIY options
- Uniform neon light output
- 120° beam output
- Available from stock in choice of white temperatures of 2700°K or 3000°K (4000°K on request)

- Free-cut technology - strip can be cut anywhere
- Constant voltage strip type
- 3 year warranty
- Dimmable with Dali, DMX, PWM
- 3D bend technology - the same strip can be used in both 'top view' and 'side view' installations
- Can be custom made to order in specified lengths

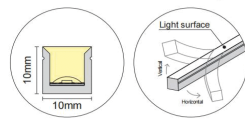
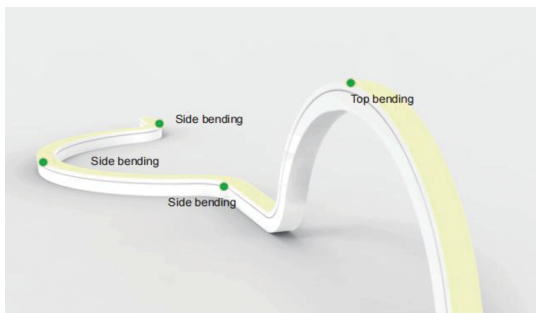
## Description

---

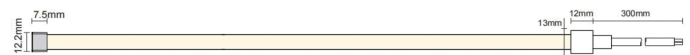
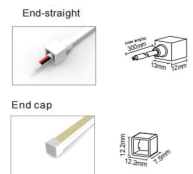
### The Profile

Our neon effect LED strip is the perfect solution for interior or exterior application where a high level of waterproofing is required combined with an excellent light quality. The IP67 rating of the product means that it can be installed in wet locations and is suitable for exterior use. The product is entirely resistant to dust ingress and offers a high level of durability against solvents, saltwater and UV light.

This innovative product is compact at only 10mm x 10mm in section and also offers the best of both worlds in that it can be bent both vertically and horizontally. The 3D Bend 10mm x 10mm strip is a top and side view solution in one. In addition to the 3D bend advantage, this product does away with cut points and instead can be freely cut anywhere. The length remaining illuminates fully regardless of where the strip is cut.



**3D Bending**  
Vertical Bending & Horizontal Bending





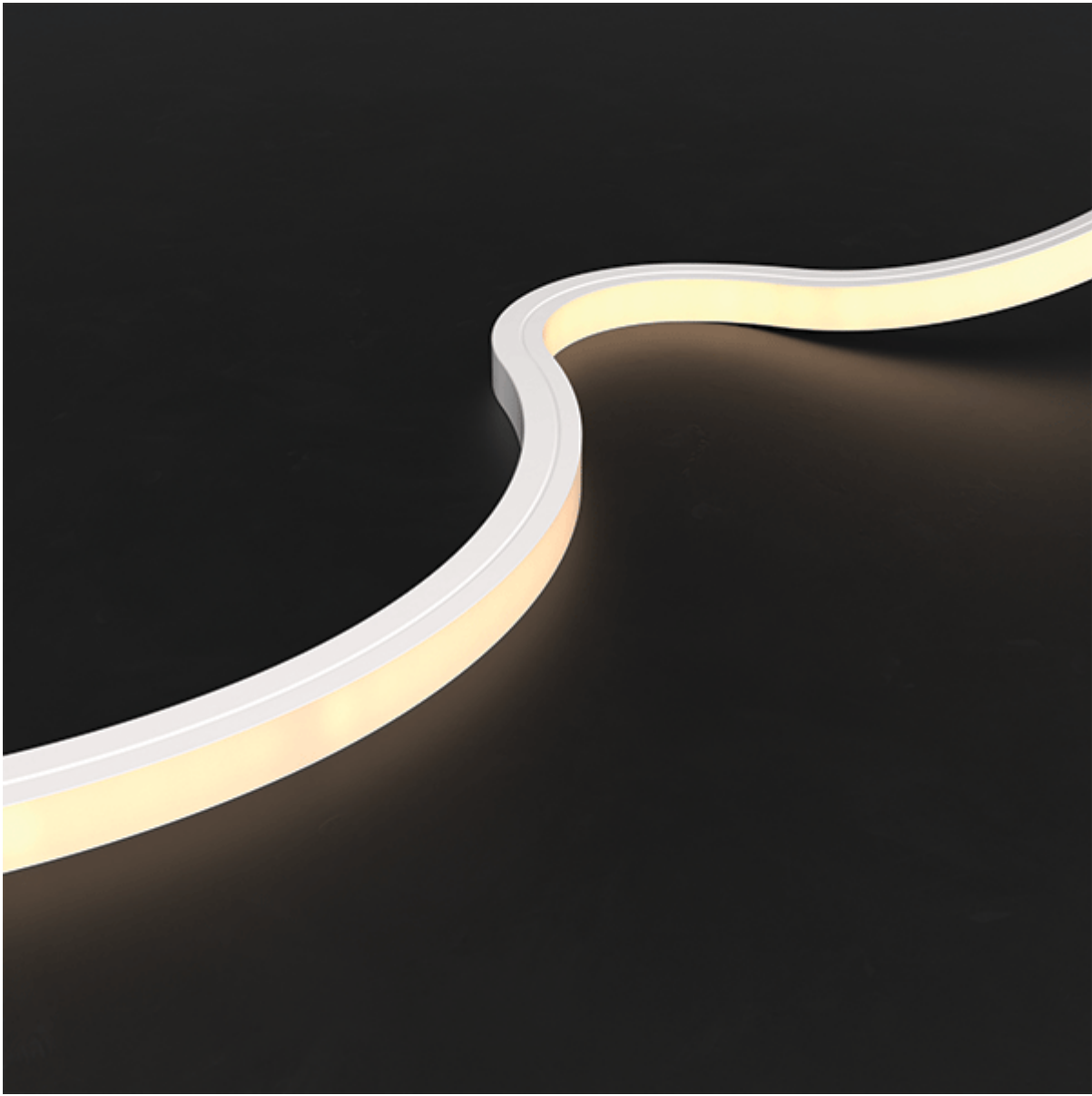


## Specification

### 10x10mm 3D Bend *Free Cut* Neon Flex

Silicone construction IP67 Dimmable 12Vdc available on request\*

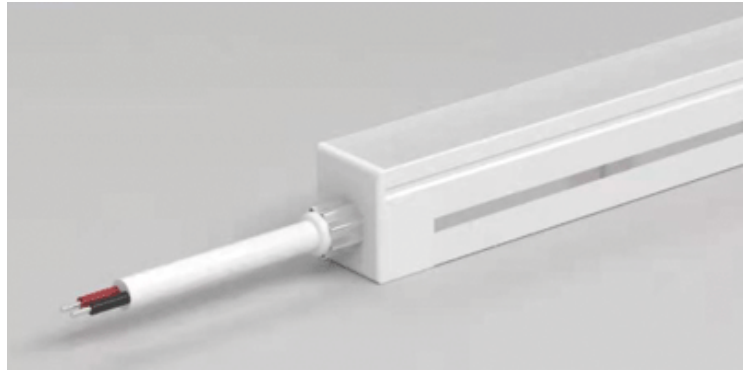
Code	CCT	CRI	LM/m	Watt/M	Cut Unit	Min. Top View Bend Radius	Min. Side View Bend Radius	Max. Length	Voltage	Type
NF3D1010CV.8.24V.2700	2600-2800	>90	320	8	Cut anywhere	60mm	100mm	5m Single Power Input	24Vdc	CV
NF3D1010CV.8.24V.3000	2900-3100	>90	263	8	Cut anywhere	60mm	100mm	5m Single Power Input	24Vdc	CV
NF3D1010CV.8.24V.4000	3900-4100	>90	270	8	Cut anywhere	60mm	100mm	5m Single Power Input	24Vdc	CV



# Connector Types

## Straight (standard)

Our standard end connector features a straight connection, directly into the end of the strip LED. This connector is supplied with 300mm of cable as standard and is IP67 rated. The opposite end is a simple injection moulded end cap. When powering lengths that are greater than 5m, a double end connector of this type can be specified to allow a connection at both ends of the product. This avoids any voltage drop and ensures that the strip performs perfectly along the entire length (up to 10m). Our 5 metre reels sold online feature this standard injection moulded connector at one end.



Actual product may vary from image shown

## Right or Left

One option is to have the connection made on either the right or left hand side (right hand side pictured). This connector is supplied with 300mm of cable and is IP67 rated. The opposite end is a simple injection moulded end cap. When powering lengths that are greater than 5m, a double end connector of this type can be specified to allow a connection at both ends of the product. This avoids any voltage drop and ensures that the strip performs perfectly along the entire length (up to 10m).



Actual product may vary from image shown

## Bottom

This connector type emerges from the underside of the strip LED. This is ideal for applications where the end of the strip is visible and the power source is behind the strip. This connector is supplied with 300mm of cable and is IP67 rated. The opposite end is a simple injection moulded end cap. When powering lengths that are greater than 5m, a double end connector of this type can be specified to allow a connection at both ends of the product. This avoids any voltage drop and ensures that the strip performs perfectly along the entire length (up to 10m).

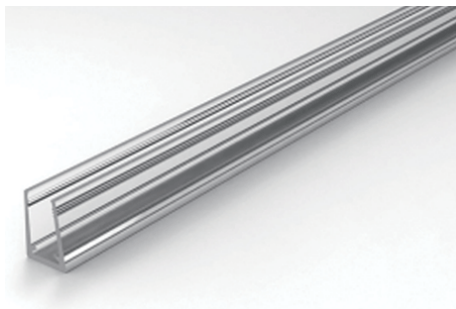


Actual product may vary from image shown

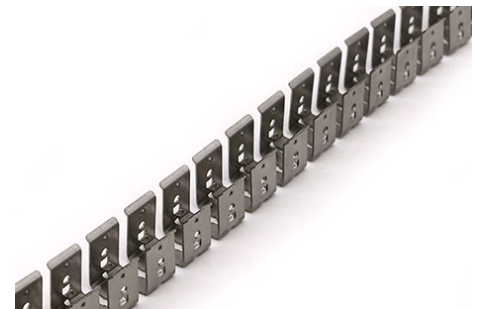
# Accessories



Aluminium U channel in 1 metre lengths or 25mm clips



Transparent plastic channel in 1 metre lengths



Stainless steel flexible U channel in 1 metre lengths

Code	Description
NF3D1010.IM.S1	Injection moulded IP67 side connector for single colour 3D bend 10mm x 10mm neon - 300mm cable
NF3D1010.IM.B1	Injection moulded IP67 bottom connector for single colour 3D bend 10mm x 10mm neon - 300mm cable
NF3D1010.IM.E1	Injection moulded IP67 end connector for single colour 3D bend 10mm x 10mm neon - 300mm cable
NF3D1010.E1B	DIY silicone IP67 end connector for single colour 3D bend 10mm x 10mm neon - 300mm cable
NF3D1010.ECB	DIY silicone IP67 end cap for 3D bend 10mm x 10mm neon
NFTM1010.UA1	Aluminium 1m U mounting channel for 10x10mm top view / 3D bend
NFTM1010.UAC	Aluminium U mounting clip for 10x10mm top view / 3D bend
NFTM1010.UP1	Transparent plastic 1m U mounting channel for 10x10mm top view / 3D bend
NF3D1010.UFLEX	Stainless steel flexible mounting U channel for 3D bend 10x10mm neon

Custom cable lengths over 300mm available on request.









## Additional Information

---

Weight (kg)	0.375000
Unit of Sale	5 Metre Reel
Light Element Type	SMD LED 8W/m
Material	Silicone
Lens Angle	120°
Width (mm)	10.00
Height (mm)	10.00
Wattage	8 W / Metre
Input Voltage	24Vdc
IP Rating	IP67
Dimmer	Yes
CRI	>90
Cutting Intervals (mm)	Anywhere
Lumens Per Watt (Lm)	45 (average)
Luminous Flux (lm/M)	360 (average)
Operating Temperature Range (°C)	-25° - +45°C
Strip LED Type	Flexible Neon

## Product Options

---

LED Colour:	White 2700°K
	White 3000°K

