

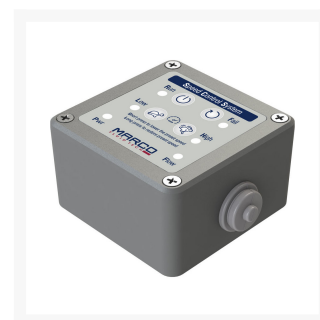


UP9/E-BR 12/24V Bronze Gear Pump, Electronic Pressure Sensor + SCS 12 l/min

£509.95

Excl. Tax: £424.96

Product Images



Short Description

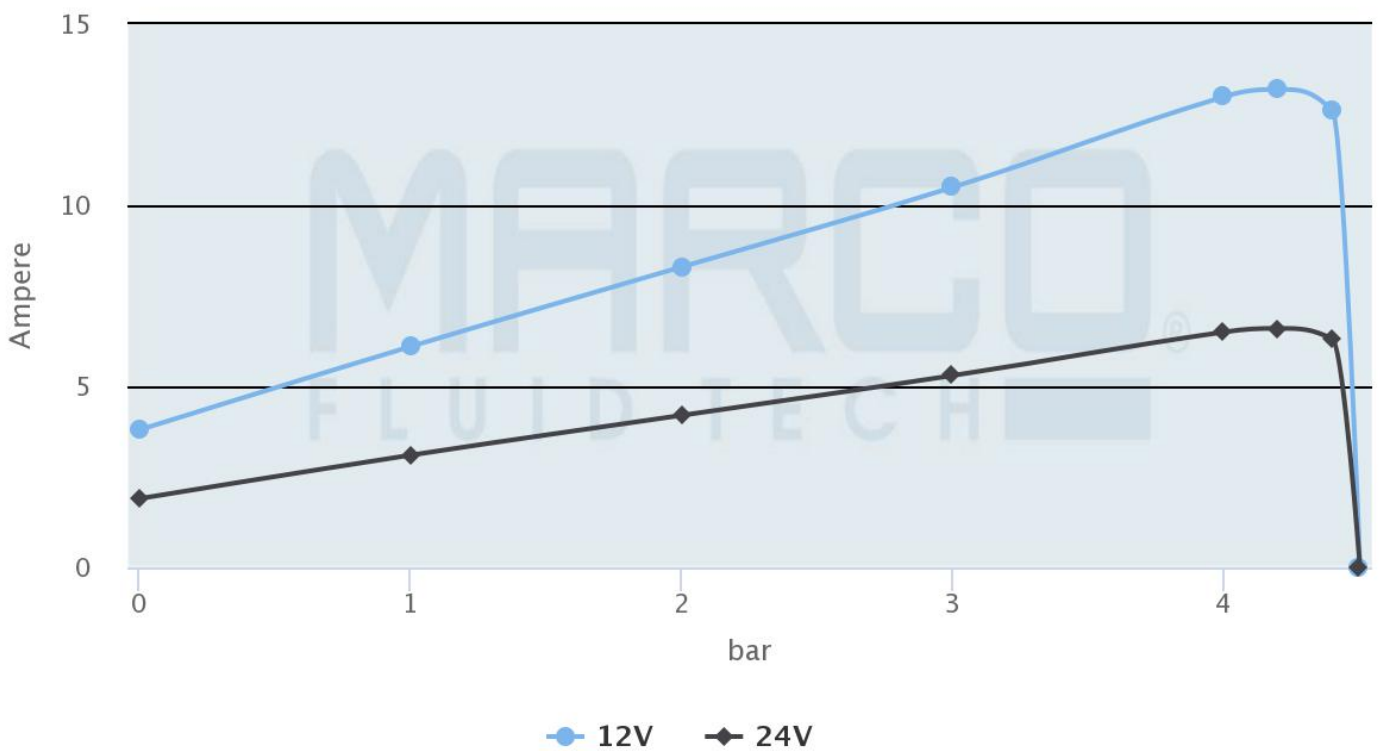
Self-priming automatic electric pump, 12/24V, with constant pressure electronic control for the transfer of

diesel and oil. Bronze gears, NBR check valve, body and connections in nicked brass, stainless steel shaft. FKM seal and NBR O-rings. Helical bronze gears guarantee constant pressure, heavy duty cycles, less noise and can operate in the absence of liquid. The pumps are supplied with a "High-Speed" setting for Diesel transfer. The integrated SCS control panel allows the switch to the "Low-Speed" mode for the transfer of oil and viscous liquids. Now featuring the Marco 'Integrated Flange' which seals the motor for extended life of the brushes and lowering of electrical consumption.

Description

Electrical absorption

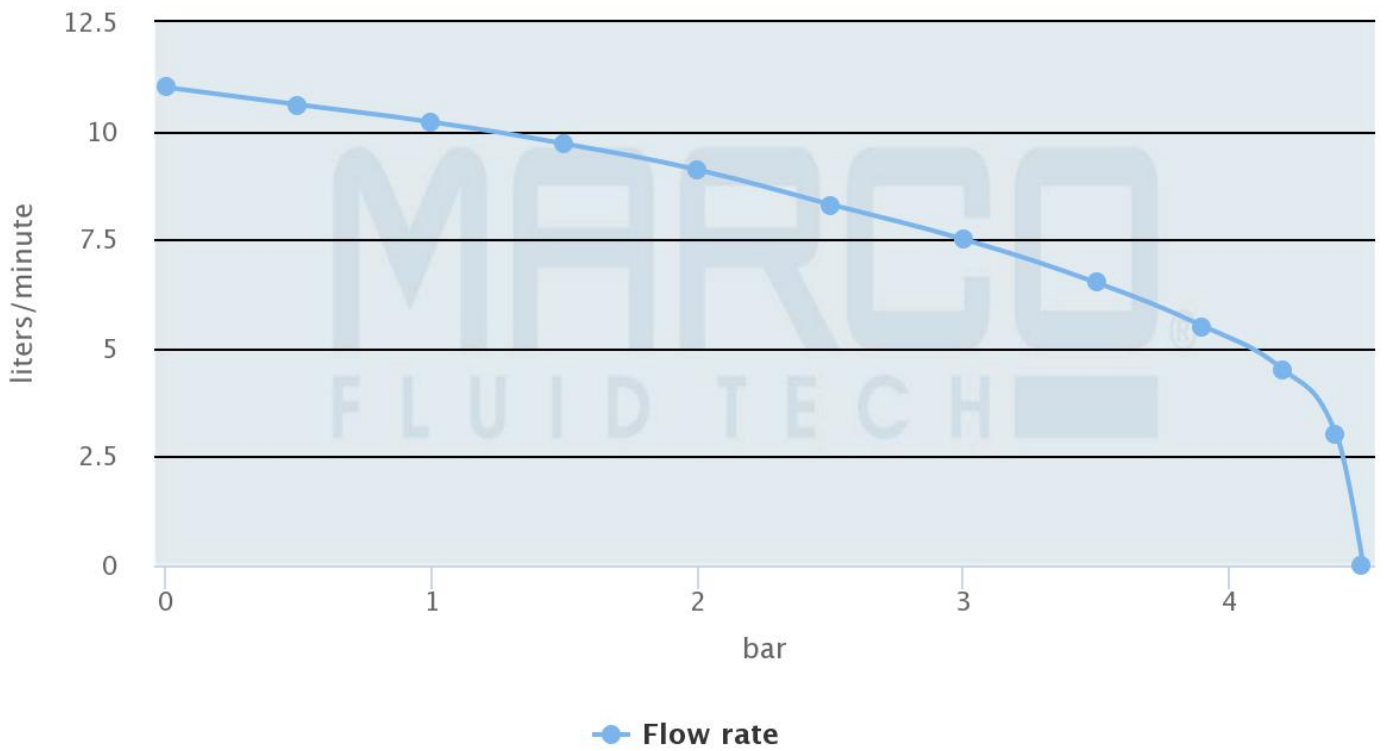
UP9-E-BR



marco.it

Flow rate

UP9-E-BR



marco.it

Additional Information

Input Voltage	12 / 24Vdc
Flow Rate	12 l/min
Pressure	4.5 bar
Liquid Type	Oil + diesel
Power Consumption	5 / 2.5 Amps
Motor Power	180W
Fuse	15 Amps
Hose Connection	13mm
Weight (kg)	3.540000
Manufacturer	Marco

