

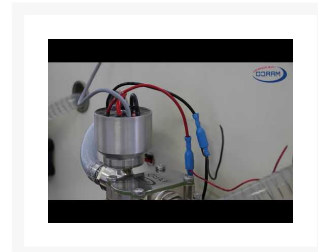
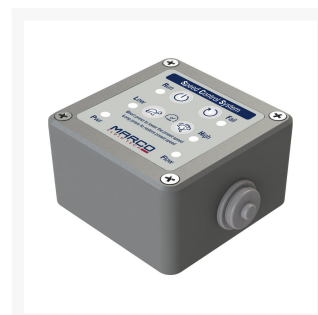


UP12/E-BR 12/24V Bronze Gear Pump, Electronic Pressure Sensor + SCS 36 l/min

£751.40

Excl. Tax: £626.17

Product Images



Short Description

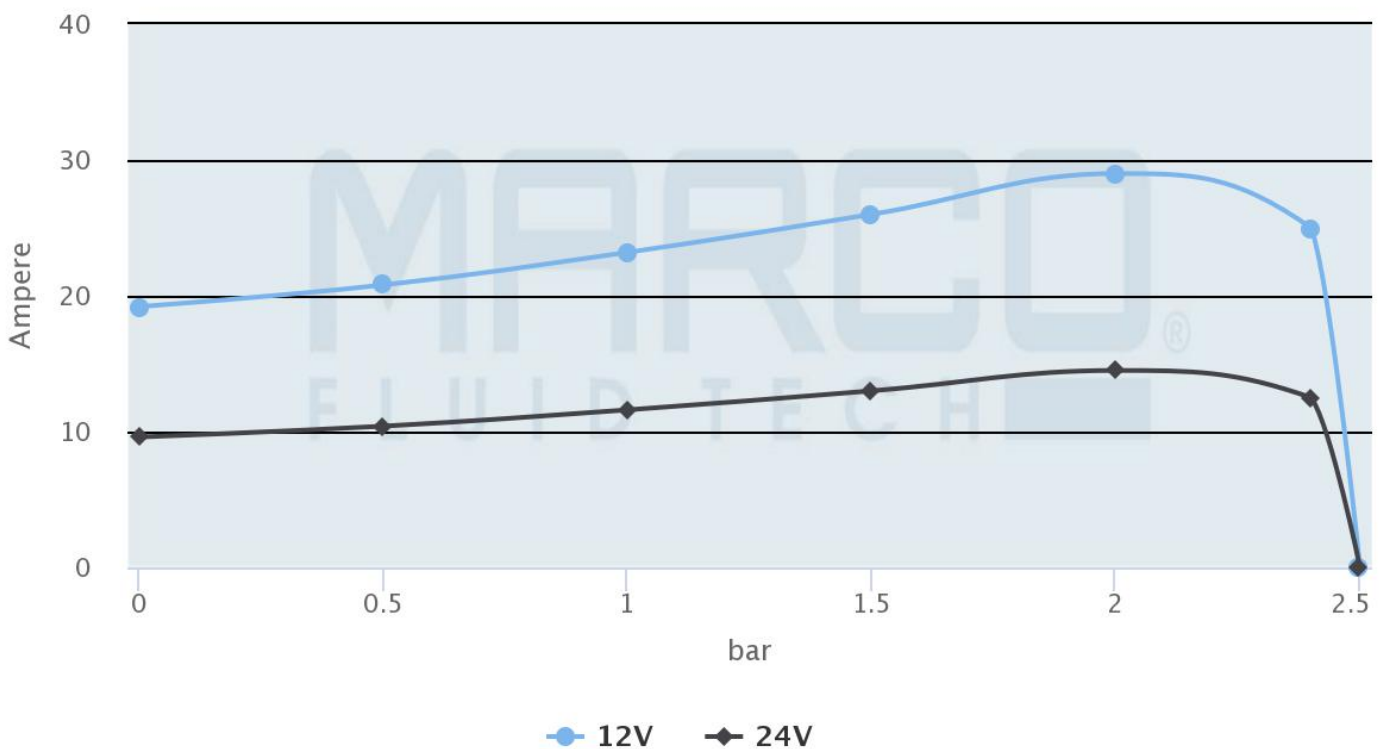
Self-priming automatic electric pump, 12/24V, with constant pressure electronic control for the transfer of

diesel and oil. Bronze gears, NBR check valve, body and connections in nickeled brass, stainless steel shaft. FKM seal and NBR O-rings. Helical bronze gears guarantee constant pressure, heavy duty cycles, less noise and can operate in the absence of liquid. The pumps are supplied with a "High-Speed" setting for Diesel transfer. The integrated SCS control panel allows the switch to the "Low-Speed" mode for the transfer of oil and viscous liquids. Now featuring the Marco 'Integrated Flange' which seals the motor for extended life of the brushes and lowering of electrical consumption.

Description

Electrical absorption

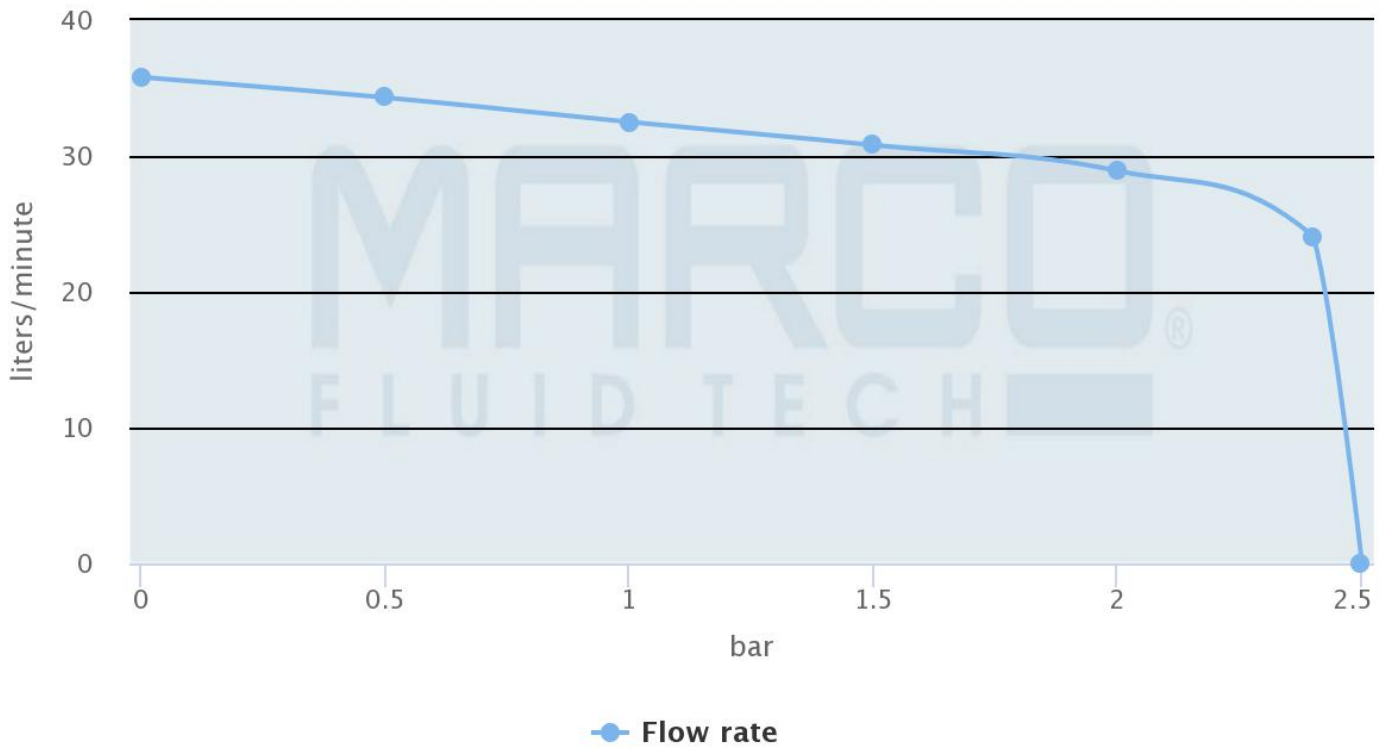
UP12-E-BR



marco.it

Flow rate

UP12-E-BR



marco.it

Additional Information

Input Voltage	12 / 24Vdc
Flow Rate	36 l/min
Pressure	2.5 bar
Liquid Type	Oil + diesel
Power Consumption	14 / 7 Amps
Motor Power	360W
Fuse	25 Amps
Hose Connection	16mm
Weight (kg)	5.460000
Manufacturer	Marco

