

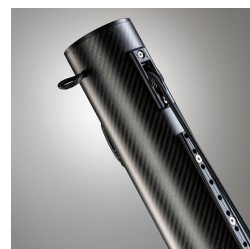
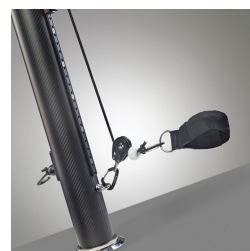
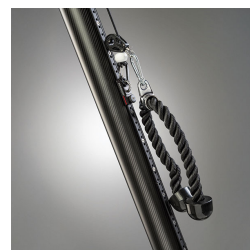
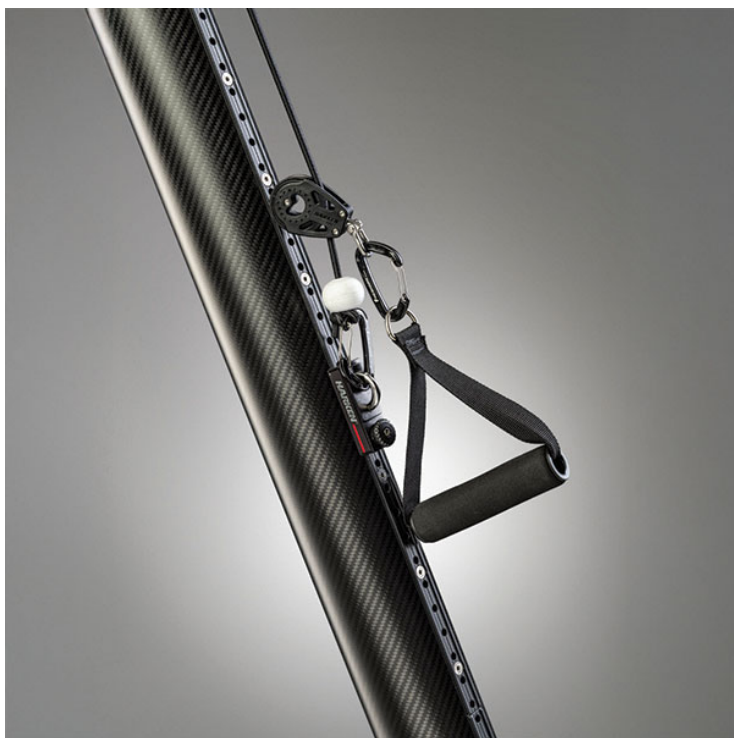


Removable Carbon Fibre Gympole

£3,999.00

Excl. Tax: £3,332.50

Product Images





Short Description

Carbon fibre removable gympole with stainless steel deck/floor socket

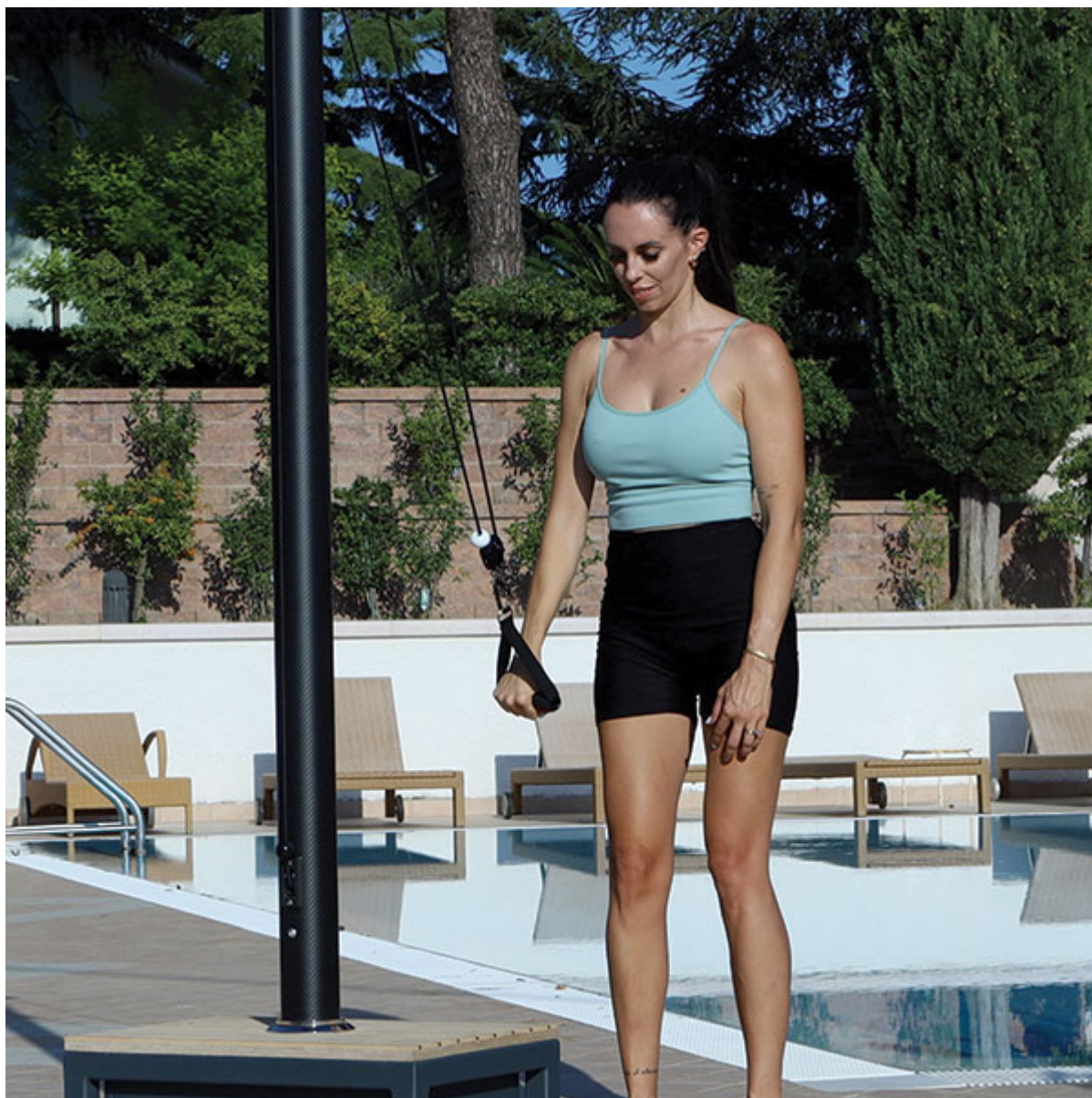
Gympole is a sleek and robust carbon fibre pole equipped with a system of cables and hooks, making it an innovative piece of fitness equipment for a full body functional workout. The pole is made of carbon fibre and features a patented ground anchoring system. This is the same device used in our Ø86mm awning system, where a base mounted on the deck allows the pole to be inserted through a screw-in connection, enabling

quick and easy installation and removal. Once inserted and tightened, the pole can rotate on its axis to align the equipment's pulling direction with the user. It operates through an innovative system (patent pending) of elastic bands and pulleys that allow for adjustable resistance, and various accessories such as handles, cables, bars, ankle straps, and TRX can be attached. The pole is supplied with a handle, rope and ankle strap as standard.

Description

Our carbon pole is the perfect ally for your workouts, whether on your boat deck, by the pool, or even in your office, or in the physiotherapy studio. Thanks to its interchangeable accessories, it allows you to train your entire body in a versatile and effective way. Designed to withstand marine conditions, it is lightweight and easy to assemble and disassemble, making it ideal for those looking for a complete and customisable fitness solution.





Features:

Elegant design

Innovative system (patent pending)

Lightweight and sturdy

Easy installation

Low maintenance

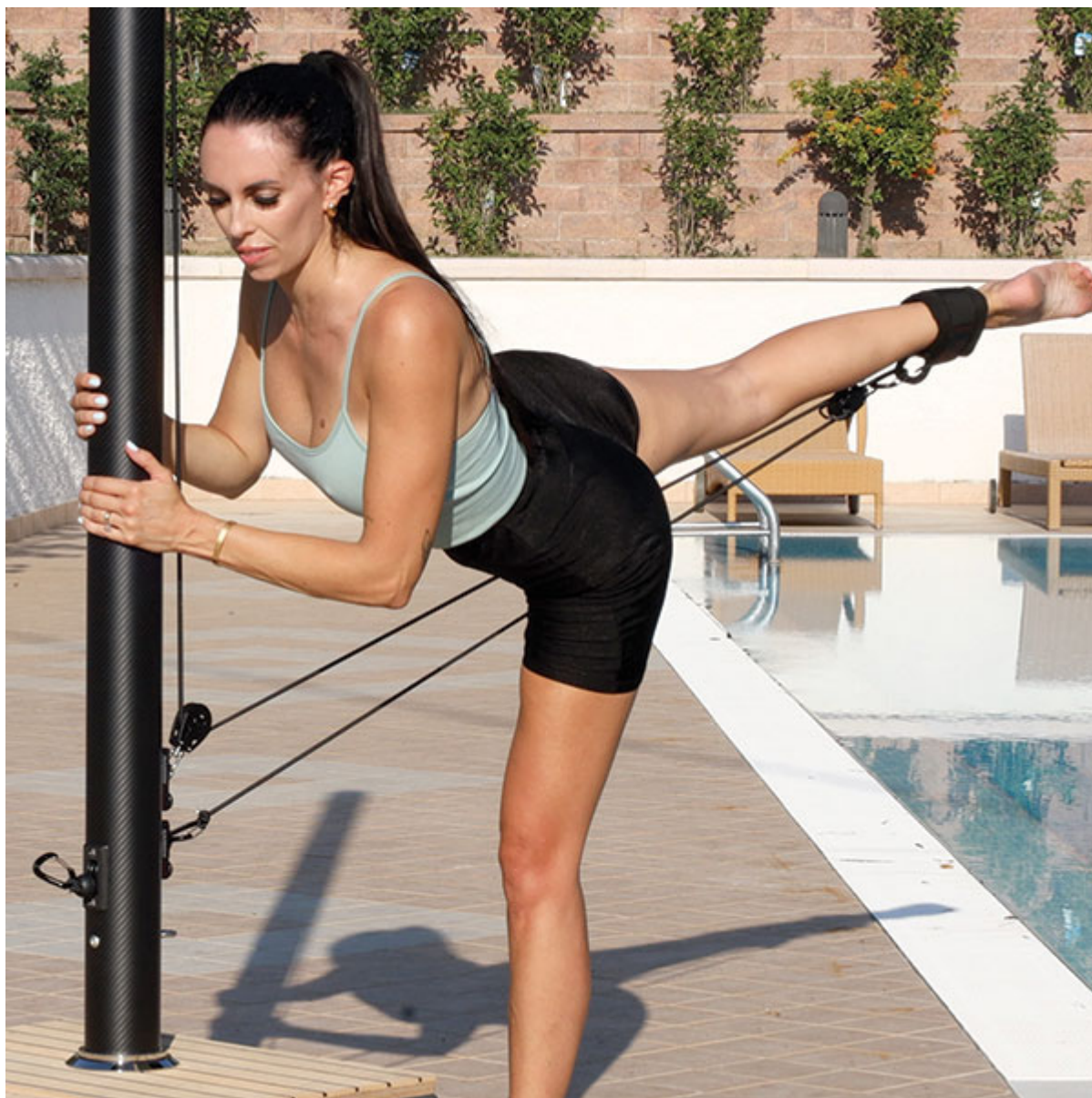
Countless exercise possibilities

Multiple applicable accessories

Made in Italy

Carbon fibre tube

AISI316L Stainless steel components



Construction & accessories:

Pre-preg carbon fiber with oriented fibers, cured in autoclave

Transparent protective coating

Handle for arms and shoulders

Rope for biceps, back, and abs

Ankle strap for legs and glutes

Installation screws included

Storage bag included

Our innovative system (patent pending) consists of a pole made entirely of carbon fibre, with fibres oriented according to the lamination plan developed by our engineers, and has a clear UV-protective finish. It is manually adjusted, with tension provided through an internal pulley system, using elastic bands and pulleys. Thanks to a track positioned along the entire length of the pole, the leverage and tension point can be moved to any height, making Gypole adaptable to any type of exercise, regardless of the user's height. The ground anchoring is designed with an innovative coupling system, made of stainless steel AISI316L, which is easy to

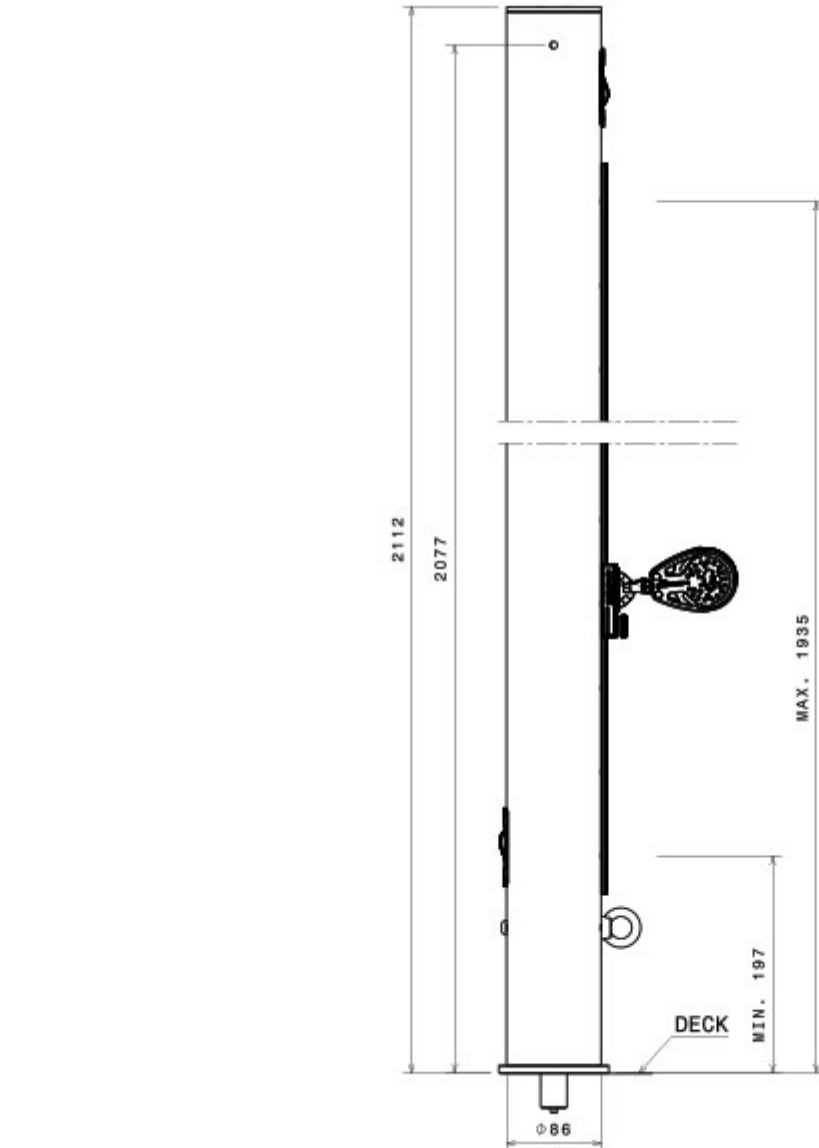
install on any surface with minimal impact (patented system).





The countless exercise possibilities that Gympole offers are matched by its versatility in various environments: ideal for private use, as a portable gym in the office, at home, on a boat, or in the garage, it can also be used in public facilities such as pools, wellness centres, gyms, and hotels. Multiple Gympoles can be set up together to create a collective training system. Alternatively, two Gympoles can be placed close to each other to work on both limbs simultaneously, balancing the effort between the right and left arms. Although built to withstand the elements, its ability to be disassembled and stored in a dedicated bag makes it perfect for both indoor and outdoor environments.

Product Drawing



Additional Information

Height (mm)	2112
Diameter (mm)	86
Finish	316 Stainless Steel & Matt Carbon Fibre
Manufacturer	I-Carbon
Weight (kg)	10.000000

