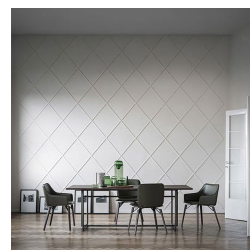
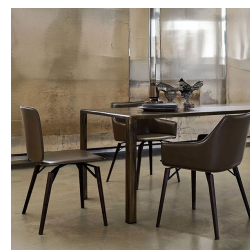




Iki PW Dining Chair

Product Images





Short Description

Iki PW Dining Chair by Frag Srl

The Iki PW dining chair by Frag Srl masterfully combines elegance and modernity, making it a versatile choice for both formal public spaces and stylish contemporary homes. Featuring a refined blend of materials, the chair pairs a lightly padded leather or saddle leather seat and back with a sleek metallic frame in a sophisticated black finish.

Supported by sturdy ash wood legs, the Iki chair showcases a harmonious contrast of textures and colours that enhance its distinctive look. Available with or without armrests, this dining chair brings comfort, style, and Italian craftsmanship to any setting. The Iki PW Dining Chair is a perfect addition for those who value both quality and modern design.

Description



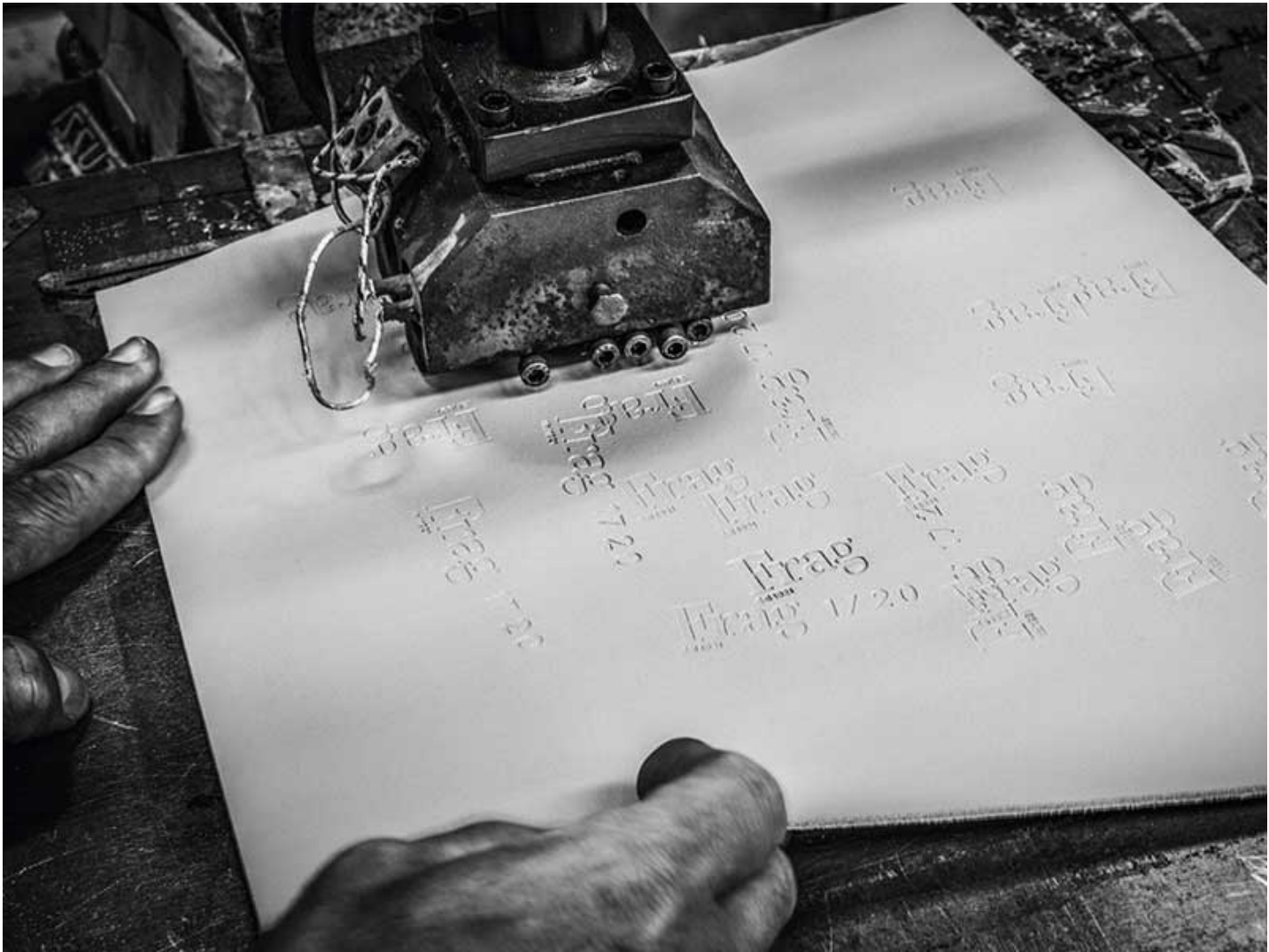


Frag Srl: Italian Excellence in Furniture Design

Frag Srl, renowned for its Italian craftsmanship, brings over 90 years of experience to the world of luxury furniture. Specialising in leather and high-quality materials, Frag combines traditional techniques with modern aesthetics to create timeless pieces that epitomise elegance and sophistication. Their dedication to innovation and design has established them as a leader in the furniture industry.

A Variety of Finishes and Upholstery for Every Taste

Frag Srl offers an extensive collection of furniture, including chairs, bar stools, armchairs, sofas, desks, and tables. Each piece is available in a wide variety of finishes and upholstery options, such as leather, saddle leather, fabrics, steel, and wood. This diversity means we can cater to various tastes and styles, ensuring every customer finds the perfect piece to complement their space.



Additional Information

Height (mm)	760.00
Width (mm)	590.00
Depth (mm)	540.00
Seat Height (mm)	470.00
Manufacturer	Frag
Weight (kg)	9.300000

