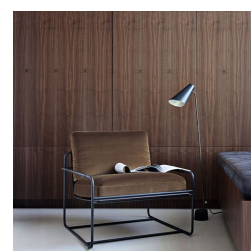




# Riviera Lounge Chair

## Product Images







## Short Description

---

# Riviera Lounge Chair by Frag Srl

The Riviera Lounge Chair by Frag Srl combines a striking modernist design with a refined, decorative touch. Its distinctive tubular frame, available in polished steel or chrome, forms an elegant structure of interlocking rectangles that shape the base, armrests, and support. The hammock-style seat and back are crafted from double-density saddle leather, ensuring durability and a uniquely luxurious look.

For added comfort, plush cushions upholstered in premium leather or fabric are layered on the saddle leather seat, blending softness with structured style. The burnished brass finish enhances the chair's elegance, making the Riviera Lounge Chair a perfect choice for modern interiors that value both style and comfort.

## Description

---



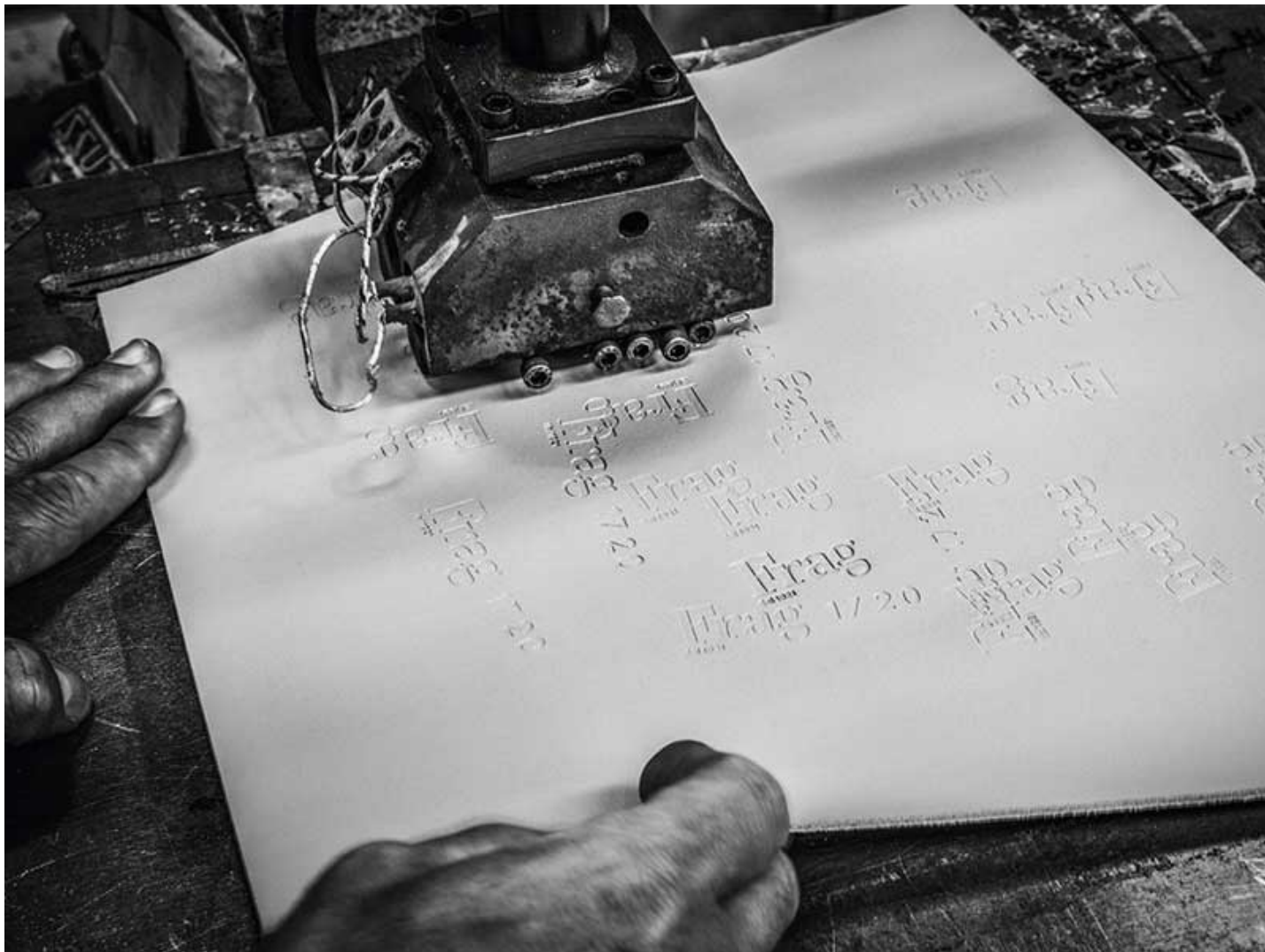


## Frag Srl: Italian Excellence in Furniture Design

Frag Srl, renowned for its Italian craftsmanship, brings over 90 years of experience to the world of luxury furniture. Specialising in leather and high-quality materials, Frag combines traditional techniques with modern aesthetics to create timeless pieces that epitomise elegance and sophistication. Their dedication to innovation and design has established them as a leader in the furniture industry.

## A Variety of Finishes and Upholstery for Every Taste

Frag Srl offers an extensive collection of furniture, including chairs, bar stools, armchairs, sofas, desks, and tables. Each piece is available in a wide variety of finishes and upholstery options, such as leather, saddle leather, fabrics, steel, and wood. This diversity means we can cater to various tastes and styles, ensuring every customer finds the perfect piece to complement their space.



## Additional Information

Height (mm)	720.00
Width (mm)	730.50
Depth (mm)	830.00
Seat Height (mm)	460.00
Manufacturer	Frag
Weight (kg)	17.800000

