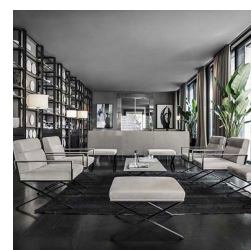
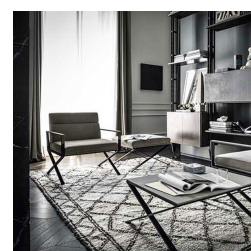




Sahrai L Armchair

Product Images



Short Description

Sahrai L Lounge Chair by Frag Srl

The Sahrai L Lounge Chair by Frag Srl is a refined piece inspired by the iconic "X"-shaped base of the classic director's chair, reimagined horizontally for a modern twist. This luxurious lounge chair combines a polished steel frame with a generously padded cushion upholstered in soft leather, offering both sophistication and

comfort.

Part of the Sahrai collection, which includes a pouf and coffee table, the Sahrai L features elegant leather detailing and premium metallic finishes, bringing a sense of timeless elegance to any setting. Ideal for modern interiors, this lounge chair is both a statement of style and a symbol of exquisite Italian craftsmanship.

Description

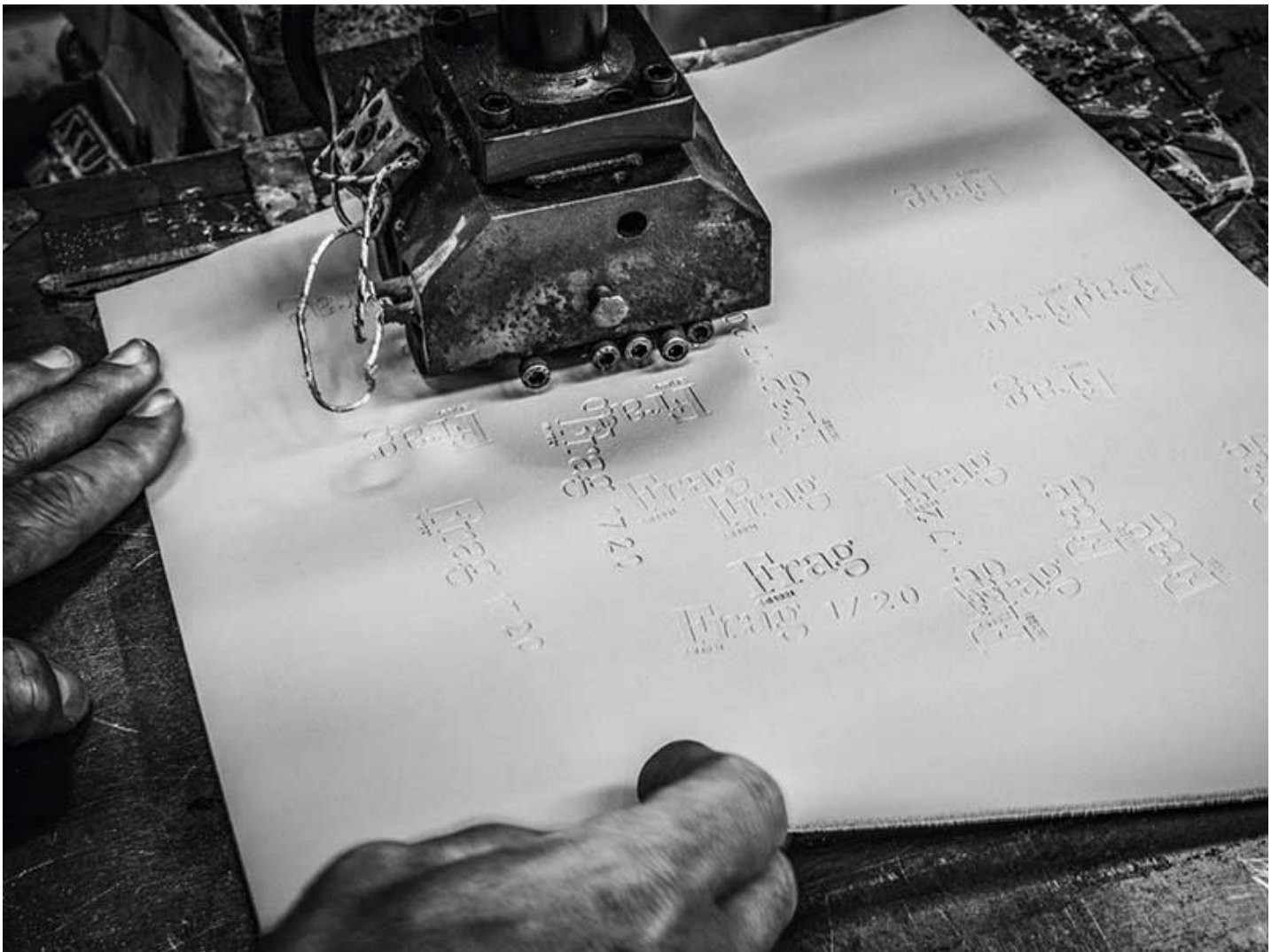


Frag Srl: Italian Excellence in Furniture Design

Frag Srl, renowned for its Italian craftsmanship, brings over 90 years of experience to the world of luxury furniture. Specialising in leather and high-quality materials, Frag combines traditional techniques with modern aesthetics to create timeless pieces that epitomise elegance and sophistication. Their dedication to innovation and design has established them as a leader in the furniture industry.

A Variety of Finishes and Upholstery for Every Taste

Frag Srl offers an extensive collection of furniture, including chairs, bar stools, armchairs, sofas, desks, and tables. Each piece is available in a wide variety of finishes and upholstery options, such as leather, saddle leather, fabrics, steel, and wood. This diversity means we can cater to various tastes and styles, ensuring every customer finds the perfect piece to complement their space.



Additional Information

Height (mm)	770.00
Width (mm)	710.00
Depth (mm)	710.00
Seat Height (mm)	420.00
Manufacturer	Frag
Weight (kg)	27.300000

