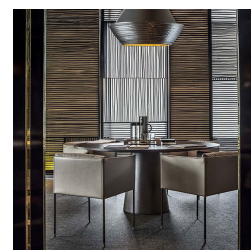
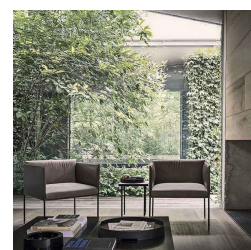
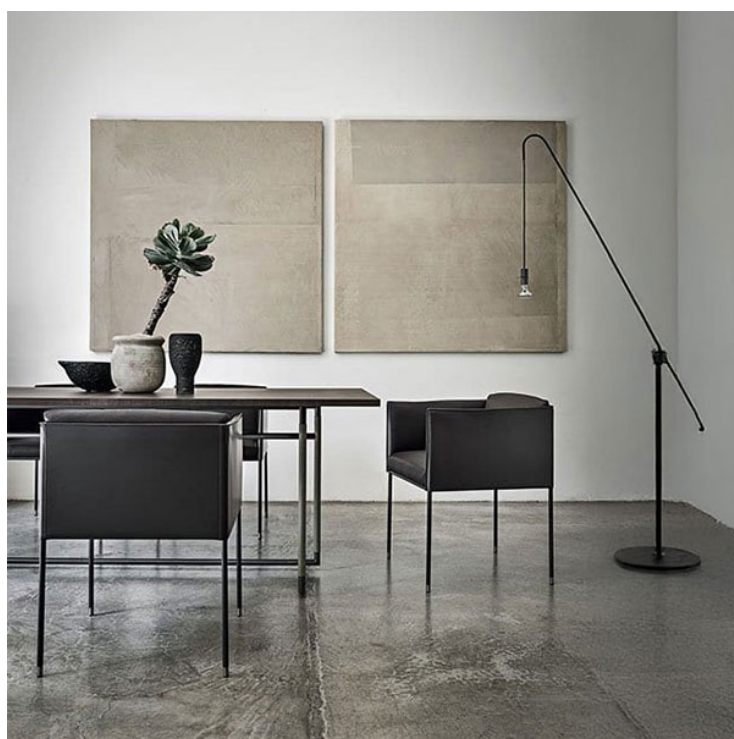




Square Dining Chair

Product Images





Short Description

Square Dining Chair by Frag Srl

The Square Dining Chair by Frag Srl embodies contemporary minimalism with its sleek, clean lines and refined craftsmanship. Part of the Square range, this chair features a lightweight, modern design, perfect for a variety of dining spaces. Its slender, tubular metal legs form the elegant frame, creating an airy and unobtrusive silhouette that complements both classic and contemporary interiors.

The chair's shell is lightly padded for comfort, upholstered in premium saddle leather, leather, or fabric, allowing you to personalise your piece to suit your style. The moulded polyurethane seat cushion, also upholstered in a choice of leather or fabrics from Frag's curated collection, provides added softness while maintaining a sophisticated aesthetic.

With a base crafted from lacquered tubular steel and finished with brushed aluminium ferrules, the Square Dining Chair combines durability with an understated elegance, making it a versatile and timeless addition to your home or dining space. Whether you're outfitting a modern kitchen or a chic dining room, the Square chair offers both comfort and design sophistication in one beautifully crafted piece.

Description

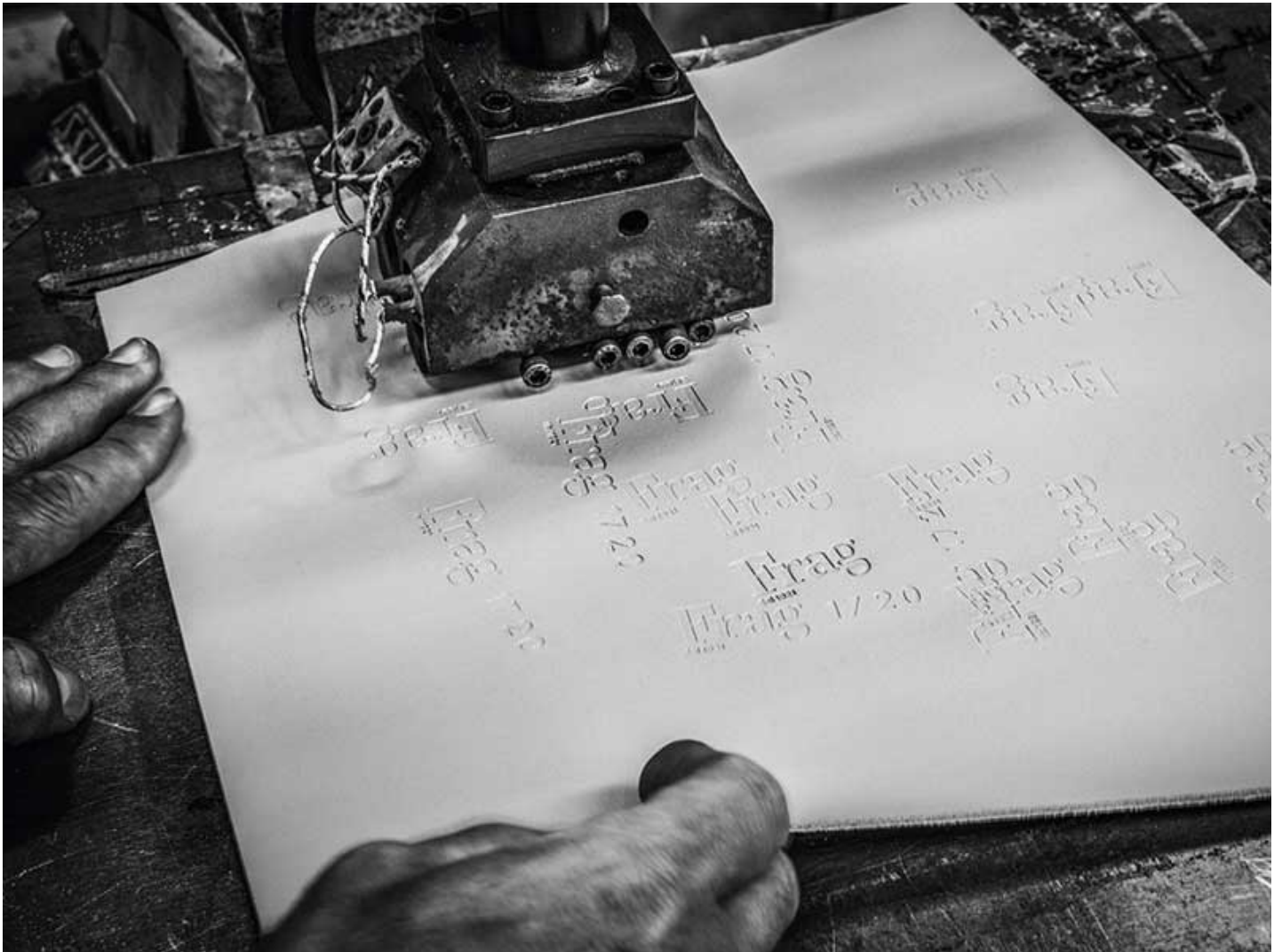


Frag Srl: Italian Excellence in Furniture Design

Frag Srl, renowned for its Italian craftsmanship, brings over 90 years of experience to the world of luxury furniture. Specialising in leather and high-quality materials, Frag combines traditional techniques with modern aesthetics to create timeless pieces that epitomise elegance and sophistication. Their dedication to innovation and design has established them as a leader in the furniture industry.

A Variety of Finishes and Upholstery for Every Taste

Frag Srl offers an extensive collection of furniture, including chairs, bar stools, armchairs, sofas, desks, and tables. Each piece is available in a wide variety of finishes and upholstery options, such as leather, saddle leather, fabrics, steel, and wood. This diversity means we can cater to various tastes and styles, ensuring every customer finds the perfect piece to complement their space.



Additional Information

Height (mm)	710.00
Width (mm)	530.00
Depth (mm)	520.00
Seat Height (mm)	460.00
Manufacturer	Frag
Weight (kg)	11.900000

