

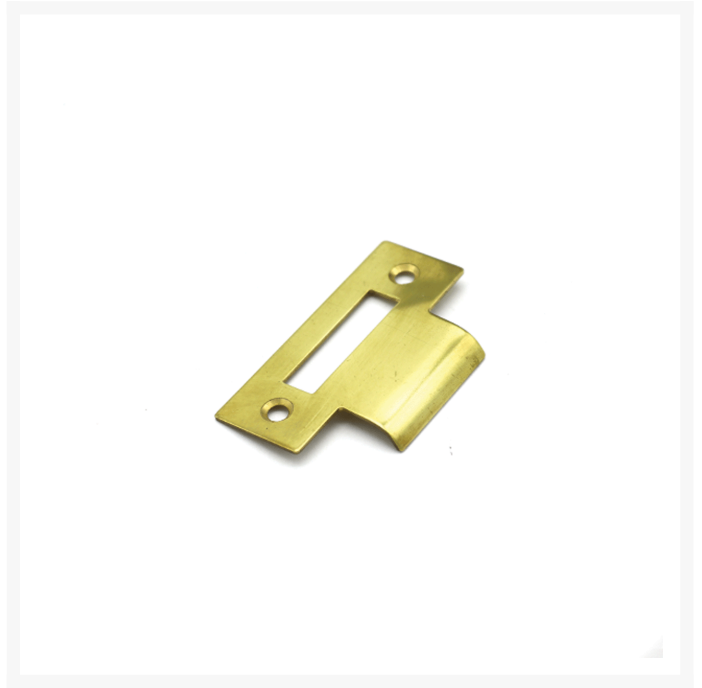


Anti-rattle Mortise Latch - Privacy Function

From
£67.81
Excl. Tax: £56.51

Product Images





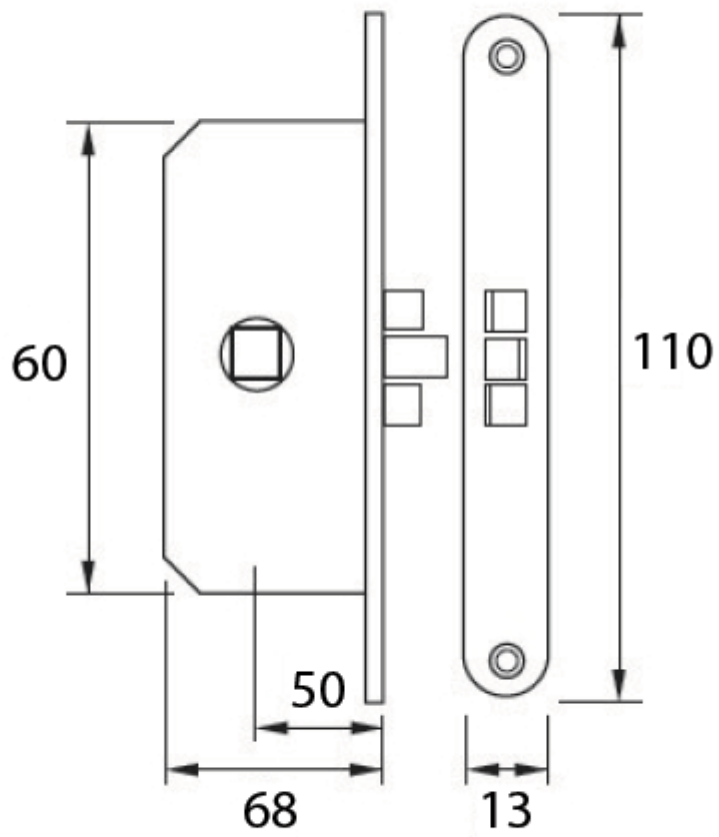
Short Description

A marine-grade mortise door latch with anti-rattle feature. This door latch is ideal for use as a simple latch but can also be used where a privacy function is required thanks to its pin activated handle block mechanism. In order to use this characteristic of the latch, we recommend viewing our door lock set collection where you will find more information on the other parts required.

This latch is available in brass or stainless steel and is supplied complete with a matching striker plate. The latch has a universal door handing design and can simply be inverted for left or right handed doors.

The lock contains an internal handle righting spring which will help to return the door handle to a horizontal position after use. For very heavy handles, it is recommended that an additional handle rose spring be used in conjunction with this latch.

Description



Additional Information

Keeper Length (mm)	56.00
Keeper Width (mm)	20.00
Keeper Tongue Length (mm)	13.50
Lock Type	Mortise Lock
Spindle (mm)	8
Latch Length (mm)	68.00
Latch Height (mm)	60.00
Latch Width (mm)	9.00
Lock Backset (mm)	50.00
Face Plate Width (mm)	13.00
Manufacturer	Razeto & Casareto
Weight (kg)	0.200000

Product Options

Finish:	Brass
	304 Stainless Steel

