

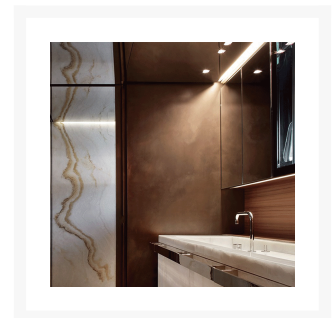
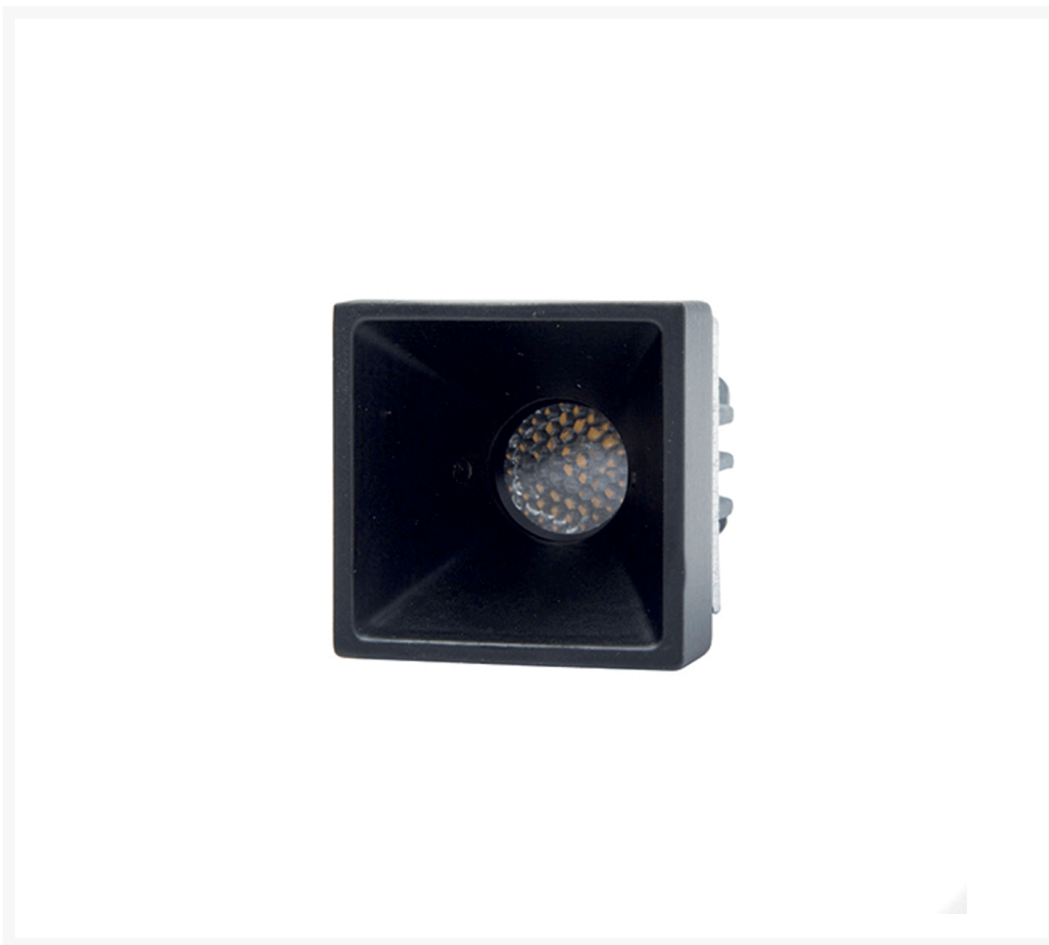


Alfa-Cris I Spotlight

From
£93.16

Excl. Tax: **£77.63**

Product Images



Short Description

The Alfa-Cris I spotlight packs a huge amount of technology into a very compact form. The Nichia™ LED chip produces a very high quality LED output with an average colour rendering index of 95. The spotlight is waterproof from both the front and rear and is available in various lens angles and colour temperatures.

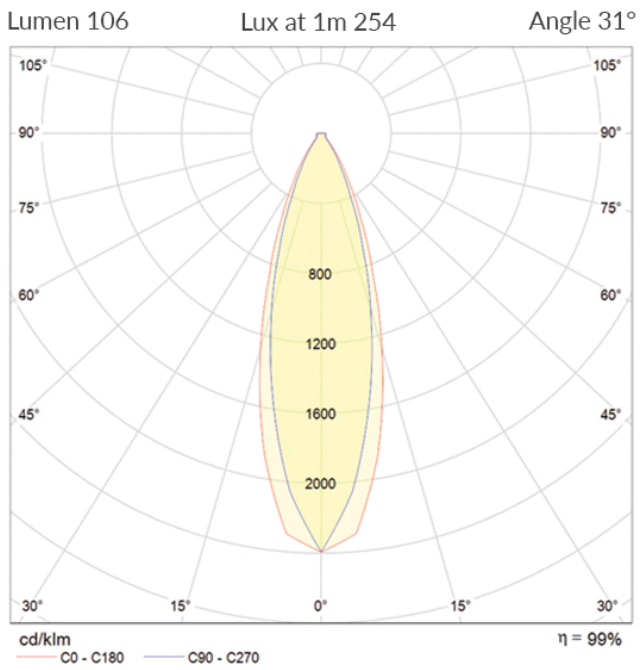
- Interior & exterior spotlight with frame-less design
- Excellent anti-glare properties with recessed LED source
- Galvanised brass face, painted
- Custom finishes available on request

- Tempered glass lens
- Anodised aluminium heatsink
- Multiple lens angles available
- Available in numerous white colour temperatures as well as red
- CRI>90

Description



ALFA CRIS I
art./ref. 5230



0.5	0.25	E(0°)	1015
	0.30	E(C90) 14.0°	465
1.0	0.50	E(C0) 16.6°	448
	0.60	E(0°)	254
1.5	0.75	E(C90) 14.0°	116
	0.89	E(C0) 16.6°	112
2.0	1.00	E(0°)	113
	1.19	E(C90) 14.0°	52
2.5	1.25	E(C0) 16.6°	50
	1.49	E(0°)	63
3.0	1.50	E(C90) 14.0°	29
	1.79	E(C0) 16.6°	28
3.0	1.50	E(0°)	41
	1.79	E(C90) 14.0°	19
3.0	1.50	E(C0) 16.6°	18
	1.79	E(0°)	28
3.0	1.50	E(C90) 14.0°	13
	1.79	E(C0) 16.6°	12

Distance [m] Cone Diameter [m] Illuminance [lx]

— C0 - C180 (Half value angle: 33.2°)
— C90 - C270 (Half value angle: 28.0°)

Additional Information

Weight (kg)	0.100000
Manufacturer	Foresti & Suardi
Installation	Recessed
Light Element Type	Power LED
Wattage	3W
Input Voltage	10-30Vdc
IP Rating	IP65
Dimmer	Yes
Bezel Size (mm)	36.00 x 36.00
Cut-out Size (mm)	36.00 x 36.00
Depth (mm)	50.00
Finish	Black

Product Options

LED Colour:	White 2700°K
	White 3200°K
	White 4000°K
	Red
Lens Angle:	13°
	23°
	31°
	Elliptical 21°-14°

