



Flat Head Skin Fitting With Hose Adaptor

From

£8.95

Excl. Tax: £7.46

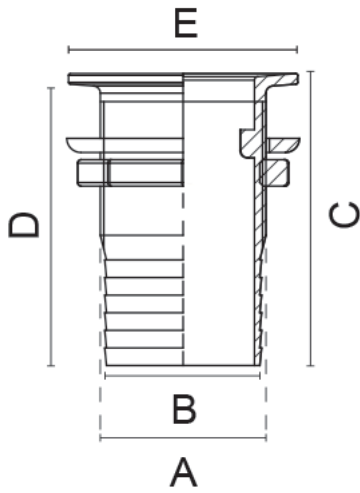
Product Images



Short Description

A pressure die cast brass flat head skin fitting with hose adaptor. Available in a large number of dimensions and sizes in a polished brass or chrome plated finish.

Description



Product Code	A (BSP)	B	C	D	E
606C	3/8"	15	55	50	35
606D	1/2"	18	65	60	40
606E	3/4"	23	70	64	48
606F	1"	30	75	70	55
606G	1 1/4"	38	85	80	65
606H	1 1/2"	44	85	80	70
606I	2"	55	100	92	83

Additional Information

Manufacturer	Foresti & Suardi
Weight (kg)	0.000000

Finish:	Chrome
	Brass
Hose Connection:	3/8" BSP
	1/2" BSP
	3/4" BSP
	1" BSP
	1 1/4" BSP
	1 1/2" BSP
	2" BSP



Product Options