



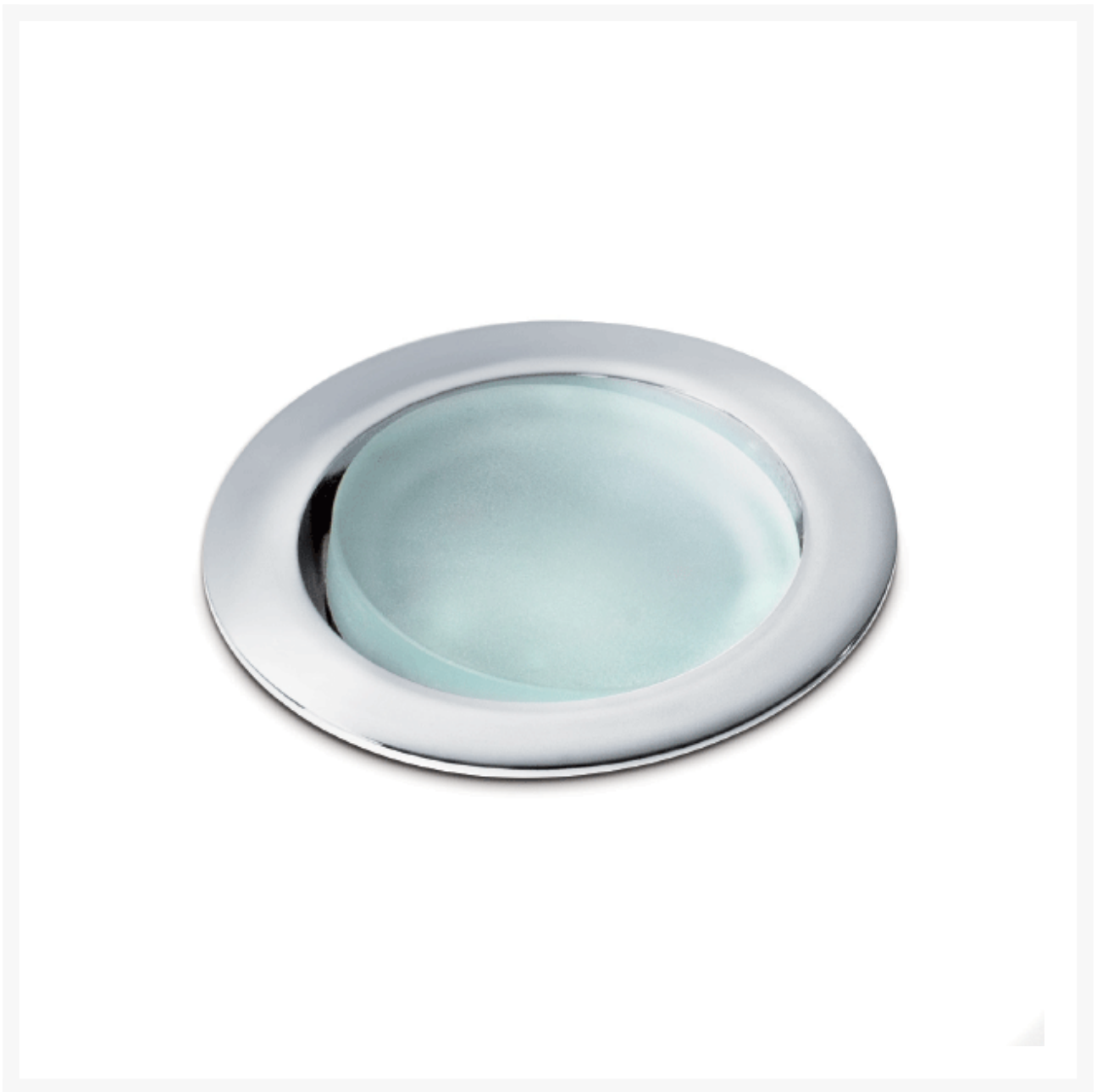
Phoenix AV Adjustable Spotlight

From

£104.16

Excl. Tax: £86.80

Product Images



Short Description

Marine-grade adjustable spotlight for interior and exterior application. The product features a galvanised brass body with a chrome plated bezel and is equipped with a 3.6 watt power LED module which can operate anywhere between 10 and 30Vdc.

- 3.6W LED module in either 3200°K or 4000°K
- 10-30Vdc power input
- IP65 ingress protection
- Frosted glass lens
- Dimmable

Description



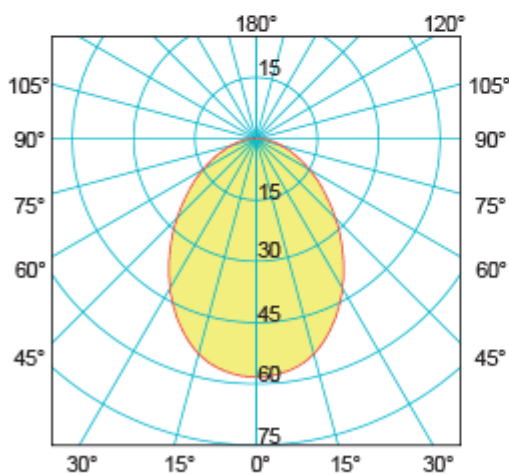
PHOENIX AV
art./ref. 8541

Power LED

126 LUMEN

58 Lux ad 1 m

86° ANGLE



| | | |
|-----|------|-----|
| 0.5 | 0.94 | 233 |
| 1.0 | 1.87 | 58 |
| 1.5 | 2.81 | 26 |
| 2.0 | 3.74 | 15 |
| 2.5 | 4.68 | 9 |
| 3.0 | 5.61 | 6 |

distance (m) cone diameter (m) illuminance (lx)
Half-Angle Value: 86.2°

Additional Information

| | |
|----------------------|------------------|
| Weight (kg) | 0.210000 |
| Manufacturer | Foresti & Suardi |
| Installation | Recessed |
| Light Element Type | Power LED |
| Lens Angle | 86° |
| Lux Level at 1 Metre | 58.00 |
| Lumens | 126.00 |
| Lumens Per Watt (Lm) | 35.00 |
| Wattage | 3.6W |
| CRI | >80 |
| Input Voltage | 10-30Vdc |
| IP Rating | IP65 |
| Dimmer | Yes |
| Bezel Size (mm) | Ø89.00 |
| Cut-out Size (mm) | Ø70.00 |
| Depth (mm) | 30.00 |
| Finish | Chrome |

Product Options

| | |
|-------------|--------------|
| LED Colour: | White 3200°K |
| | White 4000°K |

