



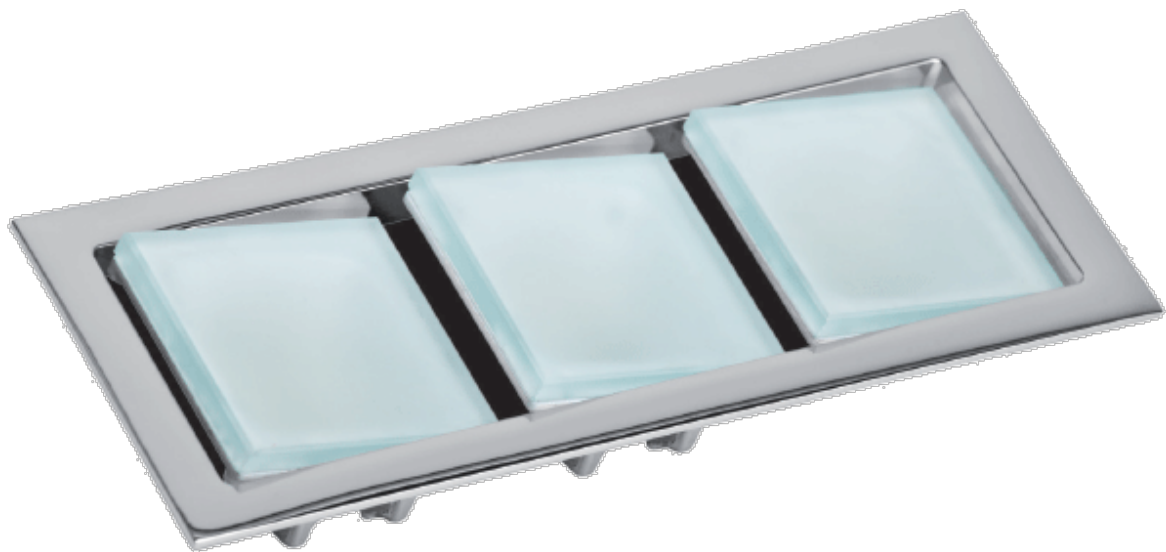
Keplero 3 Adjustable Spotlight

From

£246.26

Excl. Tax: £205.22

Product Images



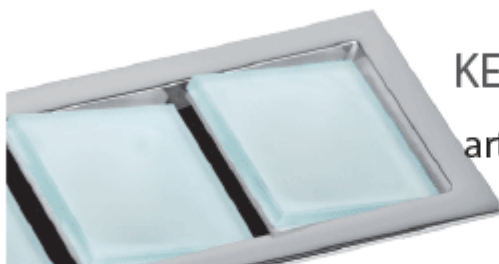
Short Description

The Keplero range of spotlights is a high specification collection of luminaires. Manufactured in single, double and triple units, the Keplero can be used in a multitude of locations in any one of its three forms depending on the lighting requirement in that space. The fittings have an IP65 ingress protection rating and can be used in interior or exterior lighting schemes. The adjustable spotlights can be tilted on a single axis.

- Adjustable spotlight
- Power LED 3.6 Watt (x2) in 3200°K or 4000°K
- Family of luminaires in single, double or triple configuration
- IP65 ingress protection
- Marine-grade construction
- Dimmable

Description

Below photometric data is for a single spotlight unit:



KEPLERO III

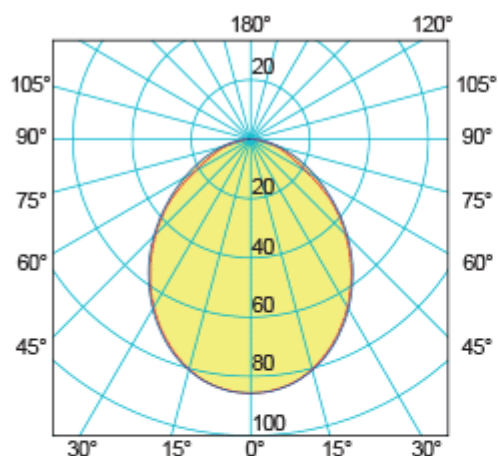
art./ref. 8562

Power LED x 3

200 LUMEN

85 Lux ad 1 m

94° ANGLE



distance (m)	cone diameter (m)	illuminance (lx)
0.5	1.09 1.06	342
1.0	2.17 2.12	85
1.5	3.26 3.18	38
2.0	4.35 4.24	21
2.5	5.44 5.31	14
3.0	6.52 6.37	9

— C0 - C180 Half-Angle Value: 93.4°
 — C90 - C270 Half-Angle Value: 94.8°

Additional Information

Weight (kg)	0.423000
Manufacturer	Foresti & Suardi
Installation	Recessed
Light Element Type	Power LED
Lens Angle	94°
Lux Level at 1 Metre	85.00 (single unit)
Lumens	200.00 (single unit)
Lumens Per Watt (Lm)	55.55 (single unit)
Wattage	3.6 W x3
CRI	>80.00
Input Voltage	10-30Vdc
IP Rating	IP65
Dimmer	Yes
Bezel Size (mm)	76.00 x 186.00
Cut-out Size (mm)	60.00 x 170.00
Depth (mm)	28.00
Finish	Chrome

Product Options

LED Colour:	White 3200°K
	White 4000°K

