



# Copernico 2 Adjustable Spotlight

From

**£266.24**

Excl. Tax: £221.87

## Product Images



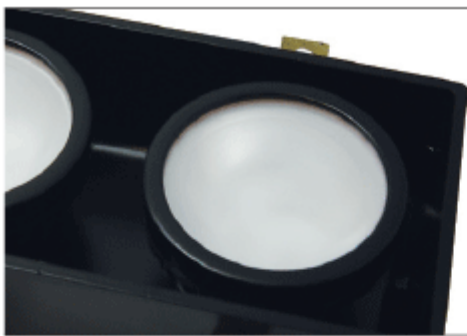
## Short Description

The Copernico II spotlight features twin 360° adjustable LED modules. This offers great positioning versatility and the possibility to focus the beam where needed. With an all-black finish, the Copernico fitting is a contemporary yet discrete option, blending-in easily with a variety of interior schemes. A single adjustable version is also available.

- 3.6 Watt Power LED in single or double configuration in 3200°K or 4000°K
- 10-30Vdc input (regulator can be simply removed in order to power the luminaire directly with current)
- All-black finish
- Dimmable

## Description

Below photometric data is for a single spotlight unit:



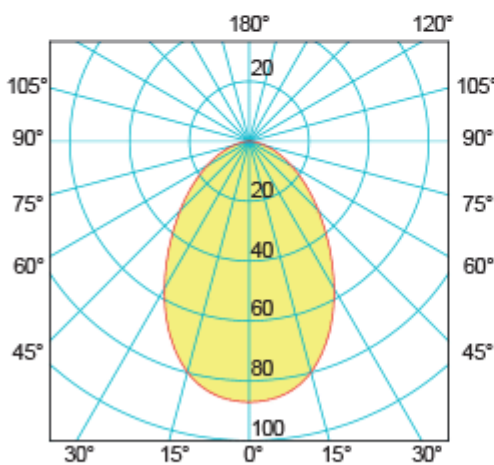
COPERNICO II  
art./ref. 8566

### Power LED x 2

156 LUMEN

87 LUX ad 1 m

75° ANGLE



0.5	0.77	347
1.0	1.54	87
1.5	2.31	39
2.0	3.08	22
2.5	3.85	14
3.0	4.62	10

distance (m)      cone diameter (m)      illuminance (lx)  
Half-Angle Value: 75.2°

## Additional Information

---

Weight (kg)	0.400000
Manufacturer	Foresti & Suardi
Installation	Recessed
Light Element Type	Power LED
Lens Angle	75°
Lux Level at 1 Metre	87.00 (single unit)
Lumens	156.00 (single unit)
Lumens Per Watt (Lm)	43.30 (single unit)
Wattage	3.6 W x2
CRI	>80.00
Input Voltage	10-30Vdc
IP Rating	IP44
Dimmer	Yes
Bezel Size (mm)	78.00 x 155.00
Cut-out Size (mm)	78.00 x 155.00
Depth (mm)	47.00
Finish	Black

## Product Options

---

LED Colour:	White 3200°K
	White 4000°K

