

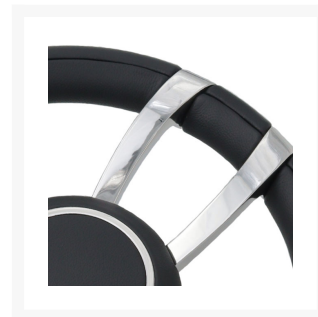
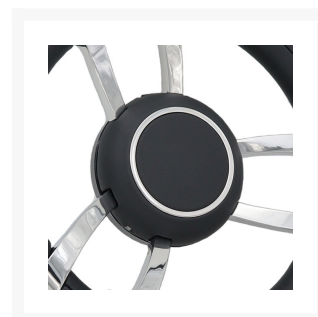


Steering Wheel - Stainless Steel

£601.31

Excl. Tax: £501.09

Product Images



Short Description

The 701A Gussi steering wheel is a beautiful addition to any helm. Cast from 316 grade stainless steel, the wheel is not only gorgeous to look at but is designed to withstand the harsh marine environment. As standard, this model is available in black leather with a black leather centre.

- Double spoke 316 grade stainless steel and leather steering wheel
- Universal fit
- 350mm diameter

Description

The 701A Gussi steering wheel is a beautiful addition to any helm. Cast from 316 grade stainless steel, the wheel is not only gorgeous to look at but is designed to withstand the harsh marine environment. As standard, this model is available in black leather with a black leather centre. It is our recommendation that leather wheels are fitted internally only.

The Gussi range of wheels come as standard with a 3/4" tapered key way fitting which is a very common wheel specification and should fit the majority of steering shafts. On request we are able to supply with a splined shaft (longer lead times may apply). We are able to adapt and change the finish to suit your requirements but please note that sometimes we do need a minimum order quantity to be able to make certain changes.

Black Leather Grip and Centre Cap



Universal Fitting



316-grade Stainless Steel Double Spokes



Additional Information

Material	AISI 316 Stainless Steel
Weight (kg)	4.160000
Manufacturer	Gussi
Finish	Stainless Steel With Black Leather

