



Electric Table Pedestal

From

£2,310.42

Excl. Tax: £1,925.35

Product Images



Short Description

Round 3 stage electric pedestal made from anodised aluminium.

Available in polished aluminium, featuring 316 grade stainless steel collars.

Can be installed in synchronised pairs for larger tables.

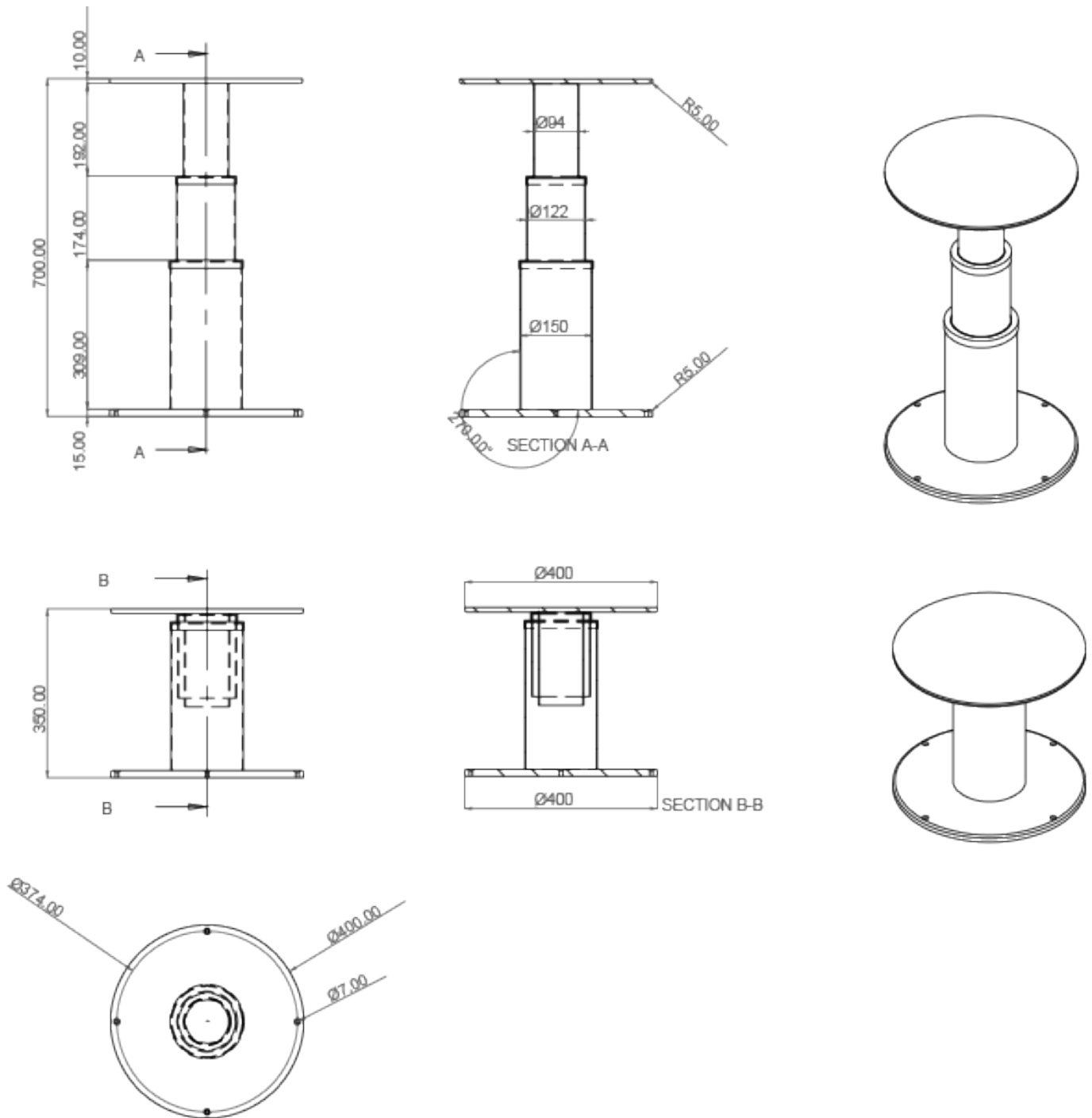
Description

Multifunctional Living

This marine-grade aluminium table pedestal is a cost effective automatic table solution. This support will allow a table to be raised and lowered at the touch of a button and convert a dining space into a relaxation space or even aid in the conversion of a seating area into a sleeping area.

Electric pedestals have been key to maximising space on board yachts for many years and can offer the same advantages to non-marine projects too. If you are planning the incorporation of an automatic table support into your project then please do not hesitate to contact us to discuss your requirements.

Drawing



Additional Information

Top Plate (mm)	Ø 400.00
Base (mm)	Ø 400.00
Max. Height (mm)	700.00
Min. Height (mm)	350.00
Max. Lifting Capacity (kg)	100
Max. Table Size (mm)	1300.00 x 950.00
Finish	Anodised Aluminium
Manufacturer	Atep
Weight (kg)	17.350000

Product Options

Input Voltage:	12Vdc
	24Vdc

