



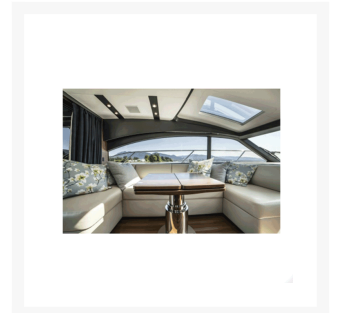
# Electric Table Pedestal

From

**£4,261.55**

Excl. Tax: £3,551.29

## Product Images



## Short Description

**3 stage electric pedestal made from mirror polished 316 grade stainless steel.**

Featuring a square top plate with rounded base and columns.

Can be installed in synchronised pairs for larger tables.

## Description

---

### Multifunctional Living

This marine-grade stainless steel table pedestal is the ultimate automatic table solution. This support will allow a table to be raised and lowered at the touch of a button and convert a dining space into a relaxation space or even aid in the conversion of a seating area into a sleeping area. This particular model is known as a 3-stage variant and is made up of 3 separate columns, 2 of which are moving. A 3-stage pedestal offers a greater range in height adjustability.

Electric pedestals have been key to maximising space on board yachts for many years and can offer the same advantages to non-marine projects too. If you are planning the incorporation of an automatic table support into your project then please do not hesitate to contact us to discuss your requirements.

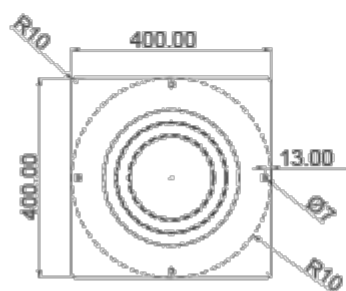
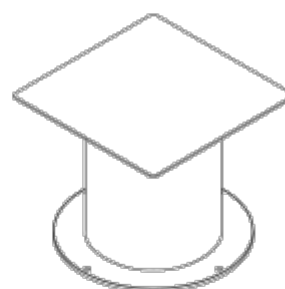
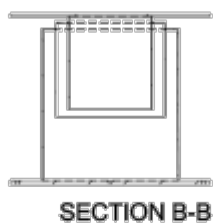
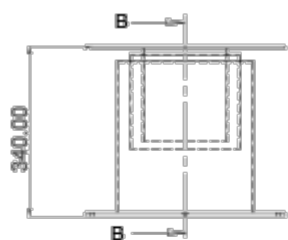
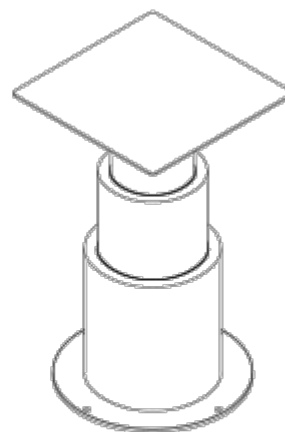
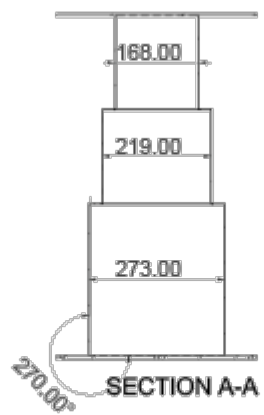
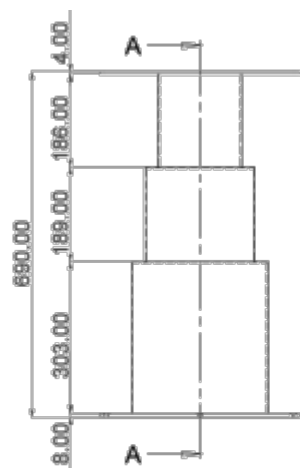
### The Finest Materials

This stainless steel model is made from 316-grade material and is polished to a mirror finish. This not only looks beautiful but also ensures that the support will continue to perform and resist corrosion even in an outdoor marine environment.

### Strength

The pedestal features powerful internal actuators which can raise and lower table tops up to 100kg in weight. This means that tables made from solid timber, glass or tables with stone or marble inlay can all be considered. It is essential however to never exceed the maximum table size when designing your solution.

### Drawing



## Additional Information

Top Plate (mm)	400.00 x 400.00
Base (mm)	Ø 400.00
Max. Height (mm)	690.00
Min. Height (mm)	340.00
Max. Lifting Capacity (kg)	100
Max. Table Size (mm)	1200.00 x 900.00
Finish	316 Stainless Steel
Manufacturer	Atep
Weight (kg)	31.000000

## Product Options

Input Voltage:	12Vdc
	24Vdc

