



Tropical - Heat Resistant Vinyl

Product Images



Short Description

Tropical vinyl is a high tech exterior vinyl with an innovative resistance to heat build-up, even with dark colours. In addition, the nano coating on the surface of the material makes it extremely resistant to weather, UV rays and dirt staining.

The industry leading *Fresh Colours* technology applied to Tropical vinyl ensures that the material stays far cooler than any other vinyl product when exposed to direct sunlight. No longer do you have to choose bland colours for exterior, sunny locations. Tropical allows you to be bold with colour.

Description

- [Colour Chart](#)
- [Backing Options](#)
- [Quilting and Welding](#)

Colour Options

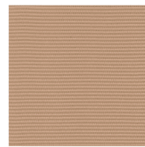
6010



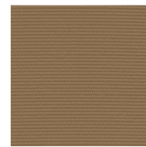
6011



6013



6014



6015



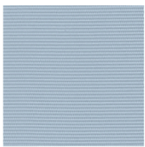
6016



6017



6018



6019



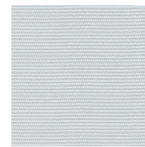
6020



6021



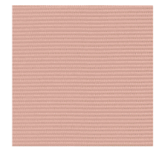
6022



6023



6075



6076



6077



6078



6079



6080



6081



Foam Backed Material

Tropical is also available with various laminated finishes such as foam backing. This process can be applied to orders of 15m or more. The following lamination options are available:

3mm foam backing

3mm foam backing + felt

3mm foam backing + cloth

5mm foam backing

5mm foam backing + felt

5mm foam backing + cloth

Quilting and Electrowelding

A high-frequency electrowelding machine is used to process artificial leather and apply a soft layer of needle-punched polyester (called leacryl) and a third thin PVC layer that protects the padding from moisture and dirt. The result is a pleating 'quilted' product that can be used also for covering cushions outdoor since the external fabric has not been punched and is therefore completely waterproof. The same pattern is also available on request with the internal PVC padding of a thickness of 4-6mm, which is more compact and resistant. Comes in various patterns with grooves of 3, 4, 5, 6, 9, 12 and 20mm wide, squares of 5, 10 and 12mm and 2 types of diamond-shaped pattern.

-
- Slight colour difference between different batches are possible. Itavipia and Timage reserve the right to update the colour range and to improve the technical properties of the product without notice.
 - Special colours require a minimum of 500 metres
 - **CLEANING INSTRUCTIONS** : Clean with mild soap and tepid water then rinse gently. Never use solvents, alcohol, steam cleaners, bleaches or aggressive detergents.

Additional Information

Material	PVC
Material Thickness (mm)	1.30 (+/- 0.1)
Use	Interior & Exterior Application
Weight (kg)	1.100000
Manufacturer	Italvipla

