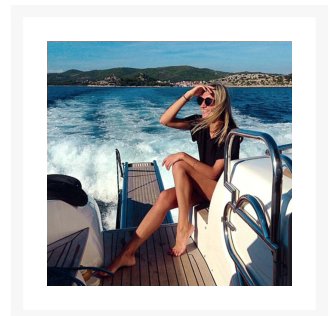
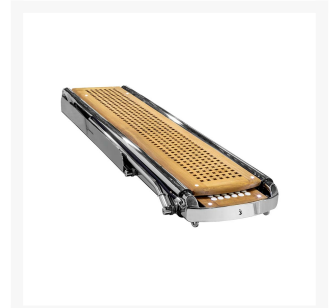




PI 389 RACING

Product Images





Short Description

- Telescopic gangway with automatic movements
- Gather gangway function and davit for lifting the tender
- Polished stainless steel structure
- Walkway platform in teak grating
- Courtesy lights
- Polished stainless steel fixing brackets
- Shiny lifting piston
- Candlesticks automatic with rope
- Manual pump in case of emergency
- Remote control and control panel for cockpit control

Description

A versatile hydraulic gangway with completely automatic movement, designed to meet the traditional needs of a wide and varied class of boats. The structure is made of stainless steel, available in both polished and painted finish.

Additional Information

Mounting Width	532.00
First Stage Width (mm)	450.00
Second Stage Width (mm)	295.00
Ram to Pivot Distance (mm)	250.00
Lifting Capacity at Maximum Extension (kg)	200.00

Product Options

Maximum Extension (mm):	2500.00
	3000.00

