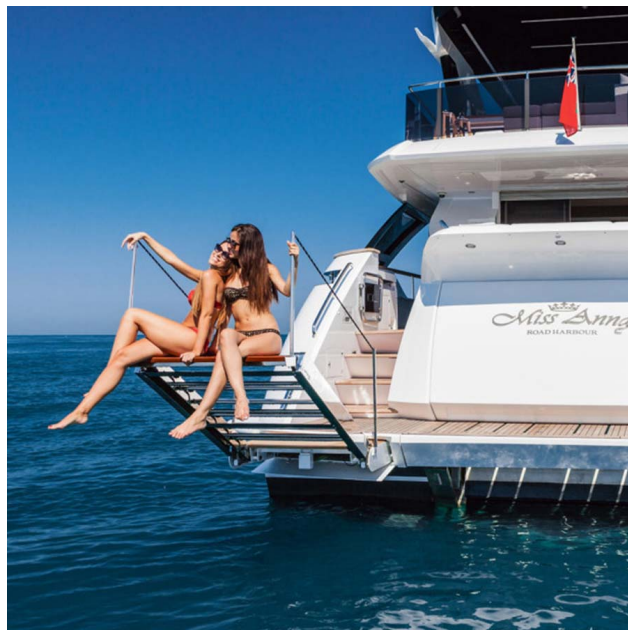


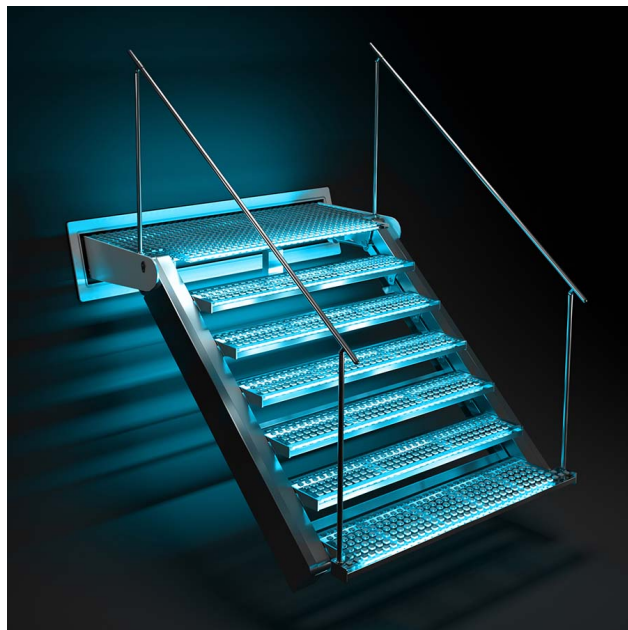
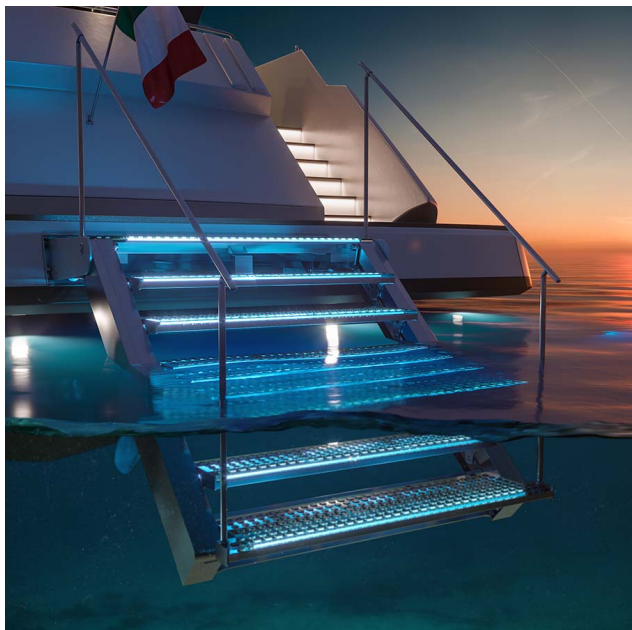


SP 602

Product Images







Short Description

- Automatic ladder combined with gangway function
- Suitable for side or stern installation
- Possibility to tilt the ladder upward or downward keeping the steps leveled
- Structure made in polished or powder coated stainless steel
- Self-levelling teak steps
- Manual removable stanchions with rope handrail
- Aluminium housing box
- Touchpad panel remote control to operate from the cockpit
- Combined with electro hydraulic control unit

- It is possible to change the size of the first access step

Description

Ladders with hybrid function ,both bathing ladder and gangway, are able to combine efficiently the features of a gangway and of a ramp. It is possible to turn quickly the ladder into a gangway, by changing step inclination, extension and height. This model of Ladder was created to ensure the safety of the walkway at steep inclines and to facilitate the landing at the quay. Customizations of this type of product are varied and absolutely necessary. The technical properties, such as size, tilt, rotation, as well as the finish of course, can be modified according to the specific demands of the shipyard, owner or designer to fit and mix the different technical and aesthetic requirements.

Additional Information

Operation Type	Hydraulic
----------------	-----------

Product Options

Version:	6 Steps
	7 Steps
	9 Steps
Maximum Extension (mm):	1665.00
	1675.00
	2620.00

