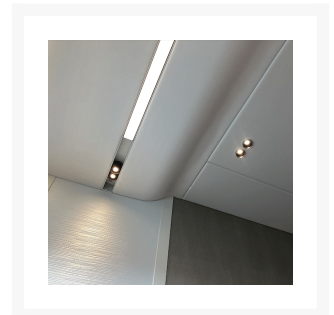
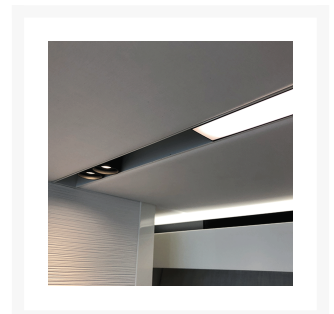




Tolomeo Custom Track Light

Product Images







Short Description

A tailor-made track lighting solution for a wide variety of applications. *Tolomeo* can be customised in terms of length, finish and lighting elements in order to aesthetically compliment any interior space as well as provide the correct lighting levels.

The basis of the product is an anodised aluminium extrusion which can be produced in any desired length up to 2 metres. Various lighting modules are then available to install in the track which are available in numerous colour temperatures.

Multiple fixing methods can be used with *Tolomeo* including surface mounting and recessed solutions.

Tolomeo keeps to the marine-grade philosophy of all of our products and is suitable for use on yachts and in coastal locations.

Description



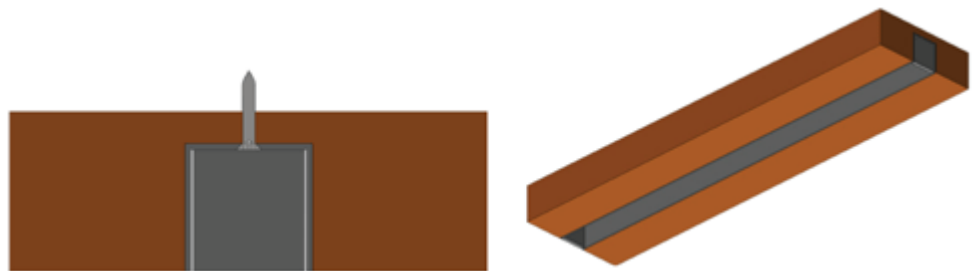
Components

- Aluminium Track

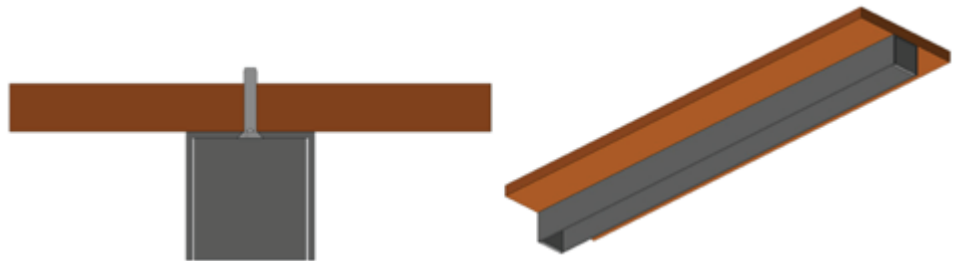
The core element to the *Tolomeo* track light is the aluminium extrusion into which all the other elements fit. This is made from anodised aluminium and can be finished in any RAL colour (minimum order quantities may apply). Standard finishes are matt black RAL 9005 20% gloss and matt white RAL 9010 20% gloss. The track can be installed in either a recessed or surface mounted fashion. It is also possible to supply the track system with cable mounting points for a suspended installation.



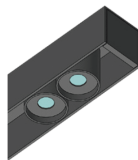
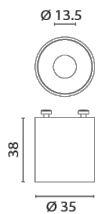
Recessed Installation



Surface Mounted Installation



- Light Elements

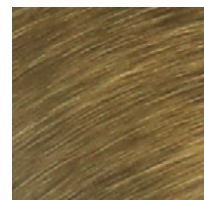


Power LED
 FAR.F.8460.2700.9
 FAR.F.8460.3200.9
 FAR.F.8460.4000.9
 FAR.F.8460.R

10/30 VDC
3 WATT
DIMMER 6018

CRI>90
 31° Lens
 angle

Example Finishes



Brushed Brass



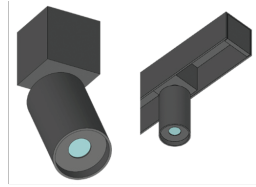
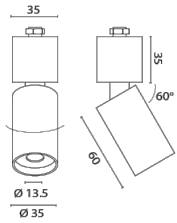
Satin
Chrome



Chrome



Black

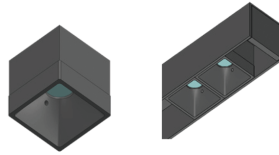
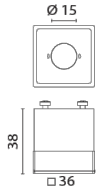
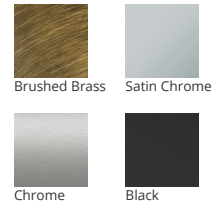


Power LED
 FAR.O.8460.2700.9
 FAR.O.8460.3200.9
 FAR.O.8460.4000.9
 FAR.O.8460.R

10/30 VDC
3 WATT
DIMMER 6018

CRI>90
31° Lens
angle

Example Finishes

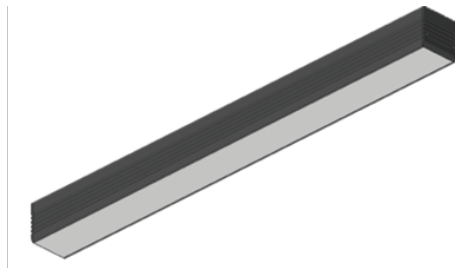
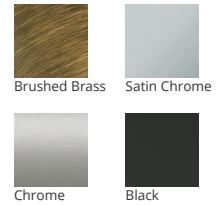


Power LED
 FAR.FQ.8460.2700.9
 FAR.FQ.8460.3200.9
 FAR.FQ.8460.4000.9
 FAR.FQ.8460.R

10/30 VDC
3 WATT
DIMMER 6018

CRI>90
31° Lens
angle

Example Finishes

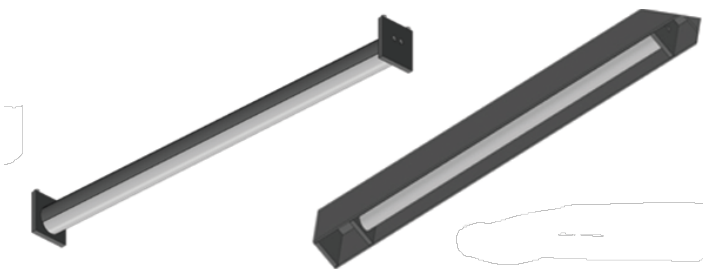
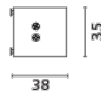
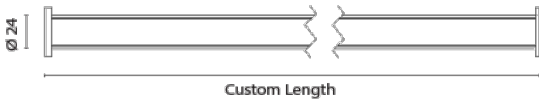


Power LED
 STRIP.Q.8460.2700
 STRIP.Q.8460.3200
 STRIP.Q.8460.4000

24-27 VDC
19 WATT/MT
DIMMER 6018

CRI>90
120°
Lens
angle

Example Finishes

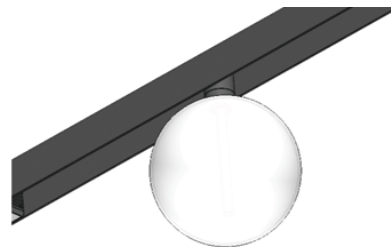
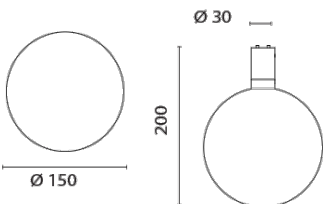


Power LED
 STRIP.T.8460.2700
 STRIP.T.8460.3200
 STRIP.T.8460.4000

24-27 VDC
13 WATT/MT
DIMMER 6018

CRI>90
120°
Lens
angle

Example Finishes



Power LED
 SFE.OP.8460.2700
 SFE.OP.8460.3200
 SFE.OP.8460.4000

24-27 VDC
4,5 WATT
DIMMER 6018

Manufacturer	Foresti & Suardi
Light Element Type	Power LED
Input Voltage	24-28Vdc
IP Rating	IP20
Dimmer	Yes



Additional Information