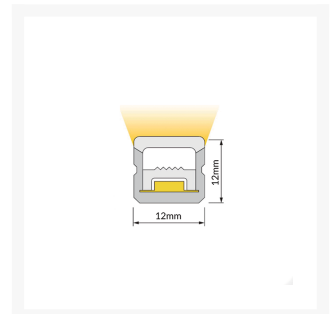
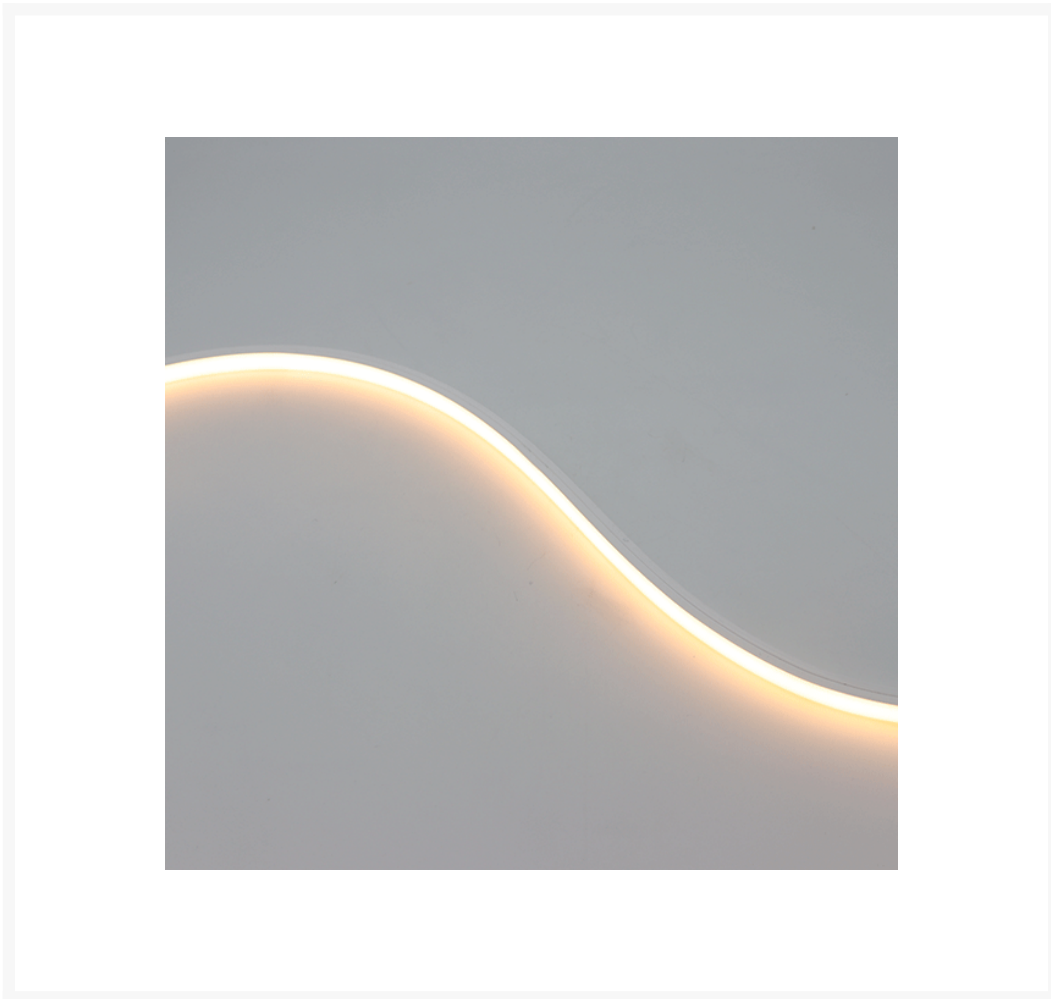




Constant Current Silicone Super Long Neon Flex LED Strip - Top View

Product Images





Short Description

Super long neon effect LED strip light with single colour output. Compact design with only 12mm x 12mm housing. This LED strip can be used in lengths up to 19 metres without any drop in performance even when powered from a single end*.

- IP67 rated casing with IP67 connectors and end caps
- Long lengths of up to 19 metres can be powered from a single end
- High quality silicone housing offers excellent anti-yellowing characteristics. The material is also non-corrosive and has a high acid resistance
- Uniform neon light output
- 120° beam output
- White in choice of 2100°K to 6000°K
- Available in static colours such as blue, red, green, yellow, amber and pink
- Available in tunable white (adjustable from warm to cool white >90 CRI)
- 2 year warranty
- Dimmable with Dali, DMX, PWM
- Top view light output - flex in the same direction of light
- Custom made to order in specified lengths

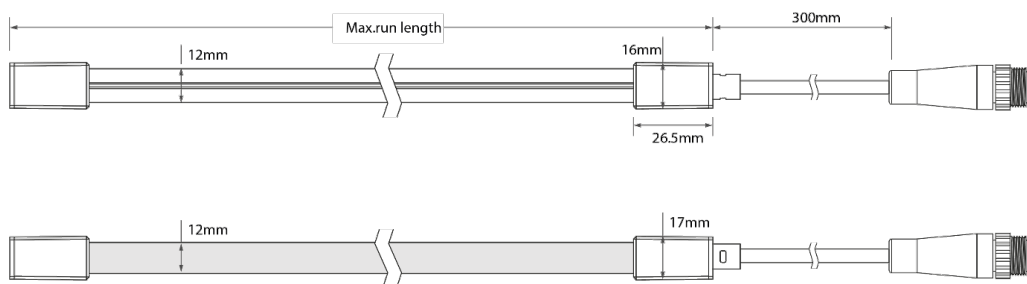
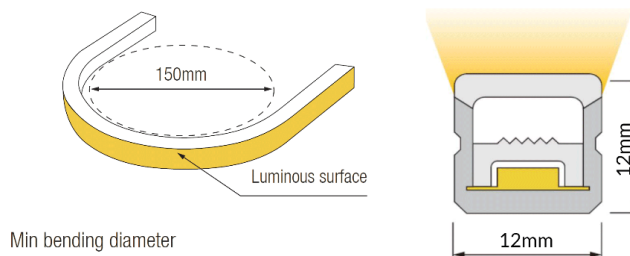
**19 metres lengths in 5 Watt per metre version only. 10 Watts per metre max. run is 13 metres.*

Description

THE PROFILE

Our neon effect LED strip is the perfect solution for interior or exterior application where a high level of waterproofing is required. The IP67 rating of the product means that it can be installed in wet locations and is suitable for exterior use. The product has a high resistance to dust ingress and offers a strong resistance against solvents, saltwater and UV light.

The top view product is flexible in the same axis as the lens which means that it can be installed in applications where it must follow a certain radius as well as in straight lengths.



Specification

The constant current super long neon flex top view product is available in a large number of colour temperatures and power outputs. The table below shows the variations available.

Colour Temperature (K)	Cutting Unit (mm)	CRI	Power (W)	Lumen (Lm/m)	Efficiency (Lm/W)	Max Length (m) -Powered single end
2100 +/- 100	50	>90	5 10	290 559.8	58.2 56.0	19 13
2400 +/- 100	50	>90	5 10	289.6 562.4	57.9 56.2	19 13
2700 +/- 100	50	>90	5 10	349.5 668.3	69.9 66.8	19 13
3000 +/- 100	50	>90	5 10	329.7 638.8	65.9 63.9	19 13
3500 + 200 / -100	50	>90	5 10	354.1 661.7	70.8 66.2	19 13

4000 + 300 / -200	50	>90	5 10	347.1 677.4	69.4 67.7	19 13
5000 + 300 / -200	50	>90	5 10	346.7 681.9	69.3 68.2	19 13
6000 + 400 / -100	50	>90	5 10	336.2 661.8	67.2 66.2	19 13

Static colours red, green, blue, yellow and pink also available. See constant voltage version for RGB and tunable white (CCT) models.

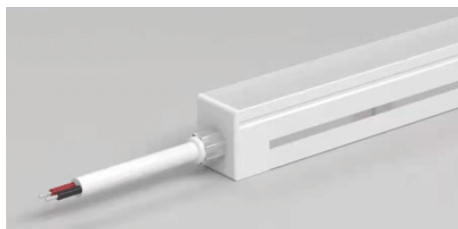
COLOUR TEMPERATURE

The neon LED strip is available in a number of colour temperatures to suit any project along side a choice of static colours. Colour temperature is important as it greatly affects the ambience of a space depending on whether a warmer or cooler output is chosen. Colour temperature is recorded in Kelvin. The higher the Kelvin, the cooler the output. Our useful colour temperature chart below will help guide you.



CONNECTORS

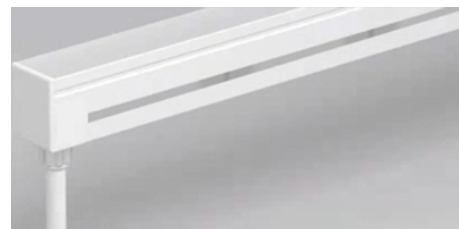
Both injection moulded and DIY plastic end connectors are available for this type of neon flex strip light. The product can be supplied with a straight end connection, bottom connection or side connection, all with an IP67 rating.



Injection-moulded end connection



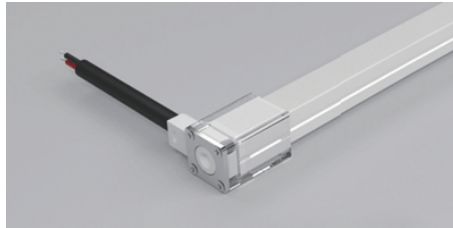
Injection-moulded side connection



Injection-moulded bottom connection



DIY screw fit end connection



DIY screw fit side connection



DIY screw fit bottom connection

INSTALLATION

The neon top view product can be quickly and simply installed using one of the compatible aluminium mounting tracks or clips. With a self-locking design, the extrusion can be screwed into position and then the strip LED is simply pushed into place.



Standard self-locking U channel - anodised aluminium - 50mm or 1m lengths

Additional Information

Weight (kg)	0.120000
Light Element Type	SMD LED
Material	Silicone
Lens Angle	120°
Width (mm)	12.00
Height (mm)	12.00
Wattage	10W / Metre
Input Voltage	24Vdc
IP Rating	IP67
Dimmer	Yes
LEDs Per Metre	168
CRI	>90
Cutting Intervals (mm)	50.00
Lumens Per Watt (Lm)	55.55 (average)
Luminous Flux (lm/M)	415 - 695
Operating Temperature Range (°C)	-25 - +45
Strip LED Type	Flexible Neon

