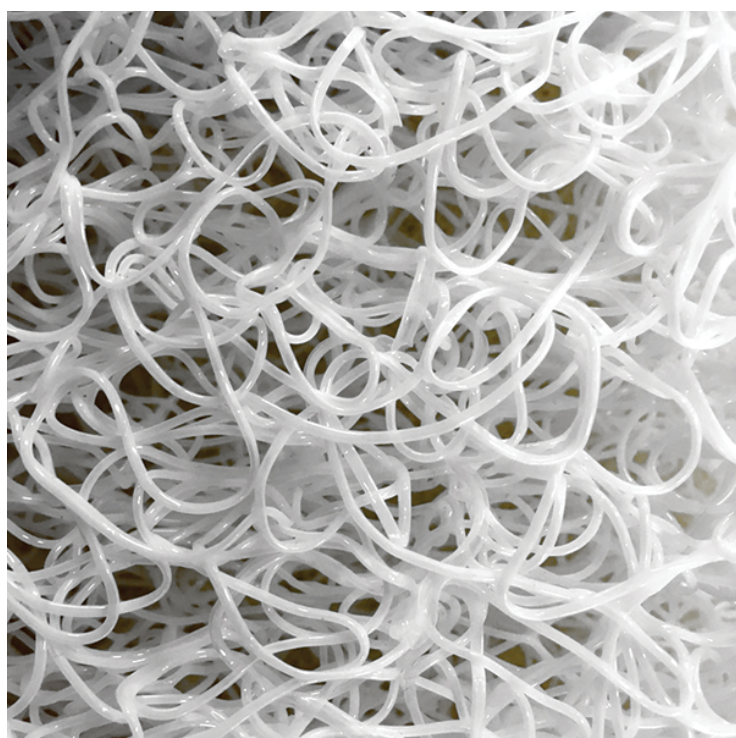




# Breathair - 3D Cushion Filling

## Product Images



## Short Description

BREATHAIR® is a washable cushion material with excellent durability. The fibres in BREATHAIR® are arranged in a complex three-dimensional structure. One way to describe the appearance of the fibres is that they appear similar in structure to a block of instant noodles made from white plastic.

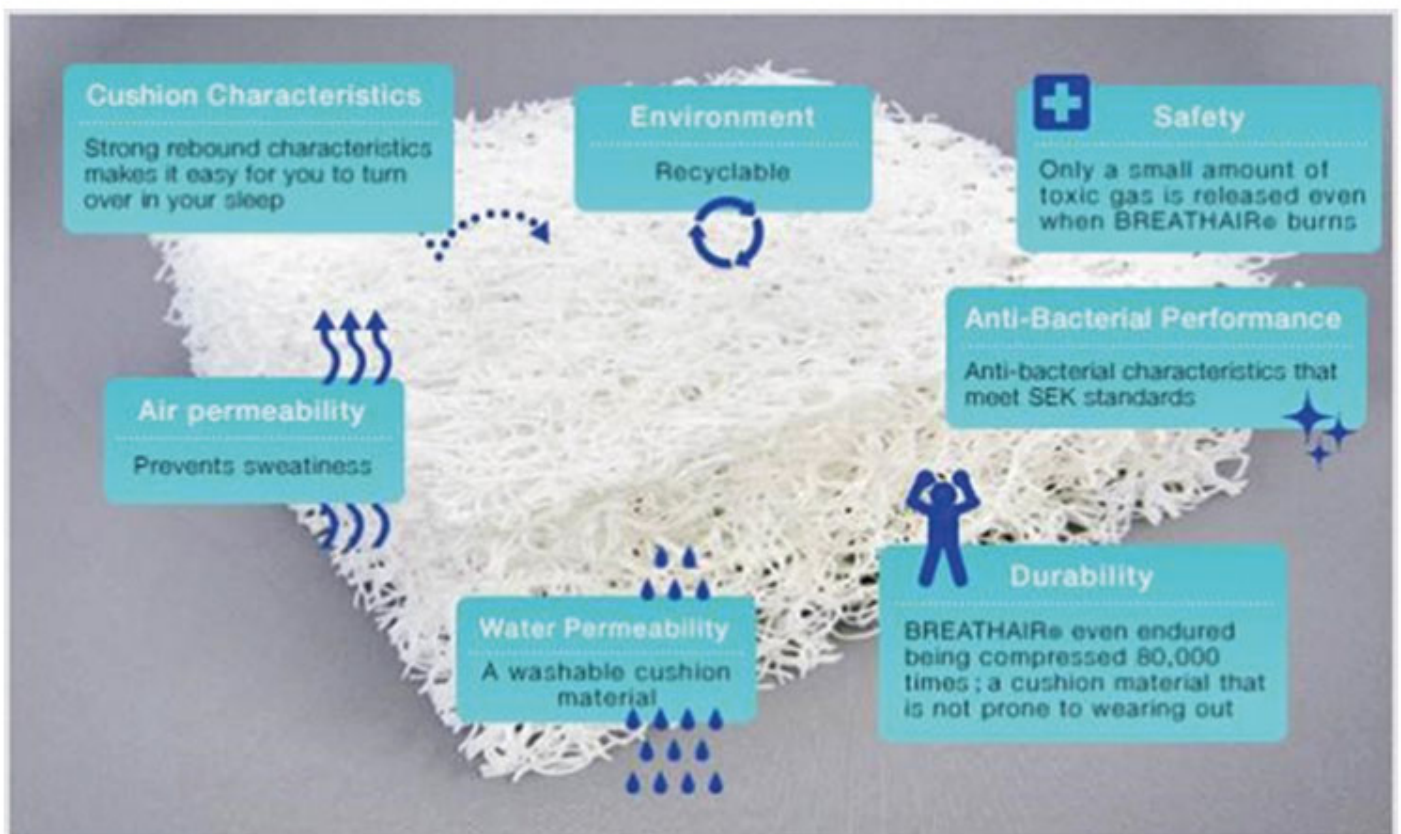
BREATHAIR® is simple to use and can be cut and treated like any other traditional foam product.

- Lightweight
- Fast drying
- Comfortable and supportive
- Hygienic

- Long lasting
- Recyclable

BREATHAIR® can be used in conjunction with our [Dryfly](#) open cell padding to provide extra comfort.

## Description

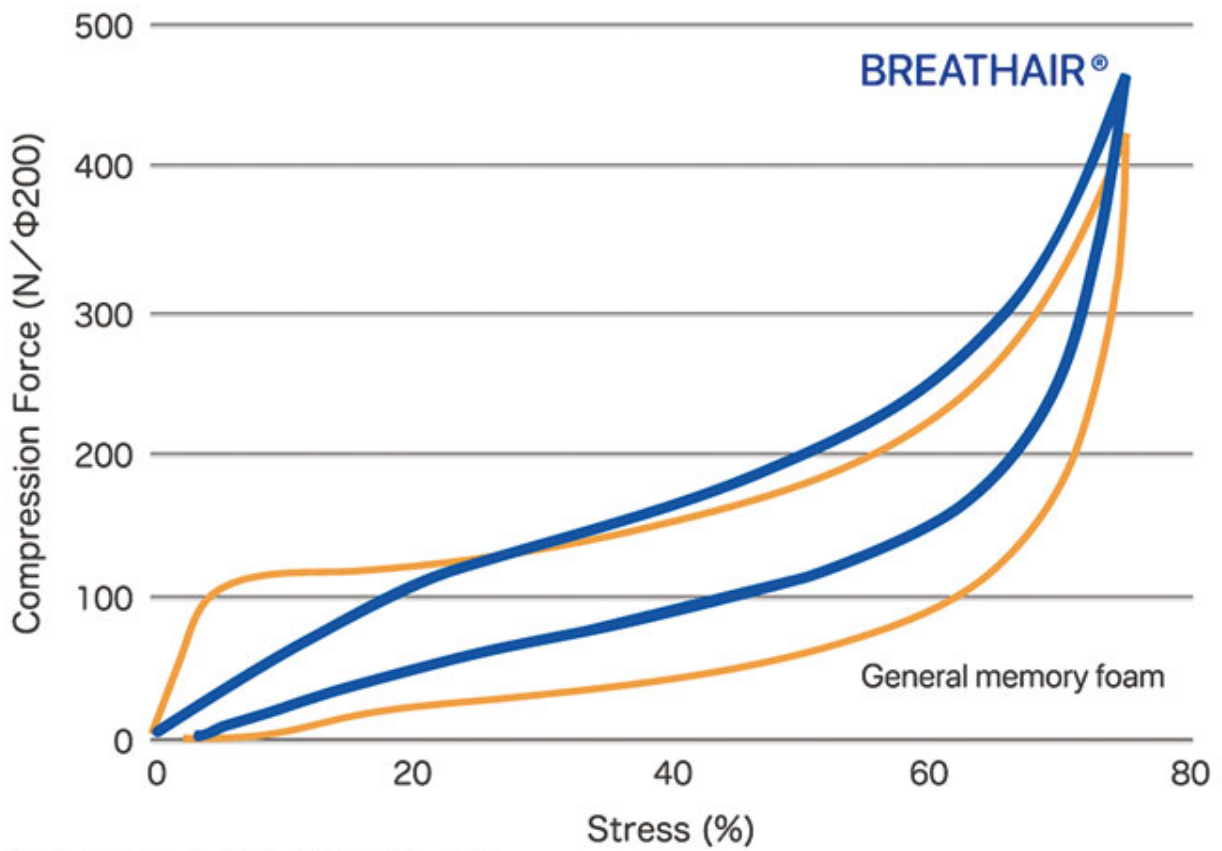


## Key Features

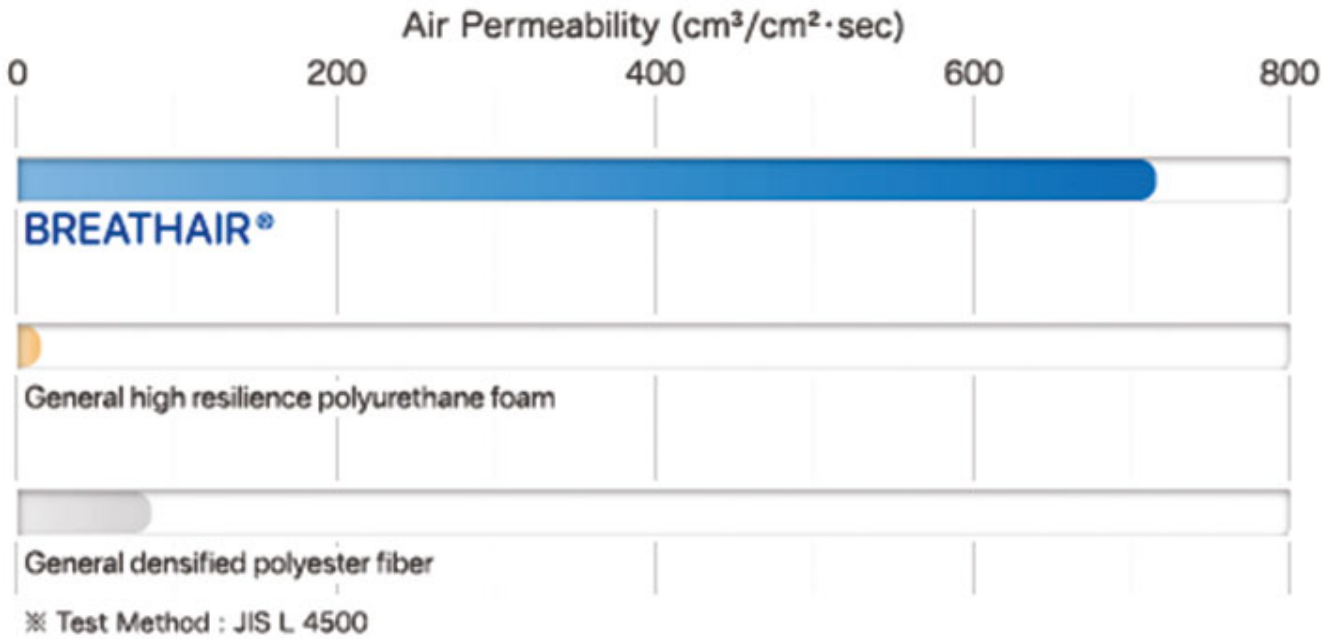
BREATHAIR® has many characteristics: air permeability, cushioning characteristics, water permeability, durability, antibacterial properties and it is kind to the environment to name but a few. Mattresses and cushions made with BREATHAIR® are not prone to a build up of sweat and this makes it easy for you to move around and turn over in bed at night. Moreover, BREATHAIR® is widely used in hospitals and care facilities because it is easy to wash and also conforms to SEK standards\* to limit the propagation of bacteria. Due to its excellent durability, BREATHAIR® has been adopted for use in the seats on N700 Series Shinkansen trains as well as other train lines and motorcycle seats.

# Compression

BREATHAIR® is extremely durable and resistant to compression. When pressure is applied it is distributed evenly, the hollow fibre loops recover quickly to their original shape



※ Test Method : JIS L 4500 300 x 300mm



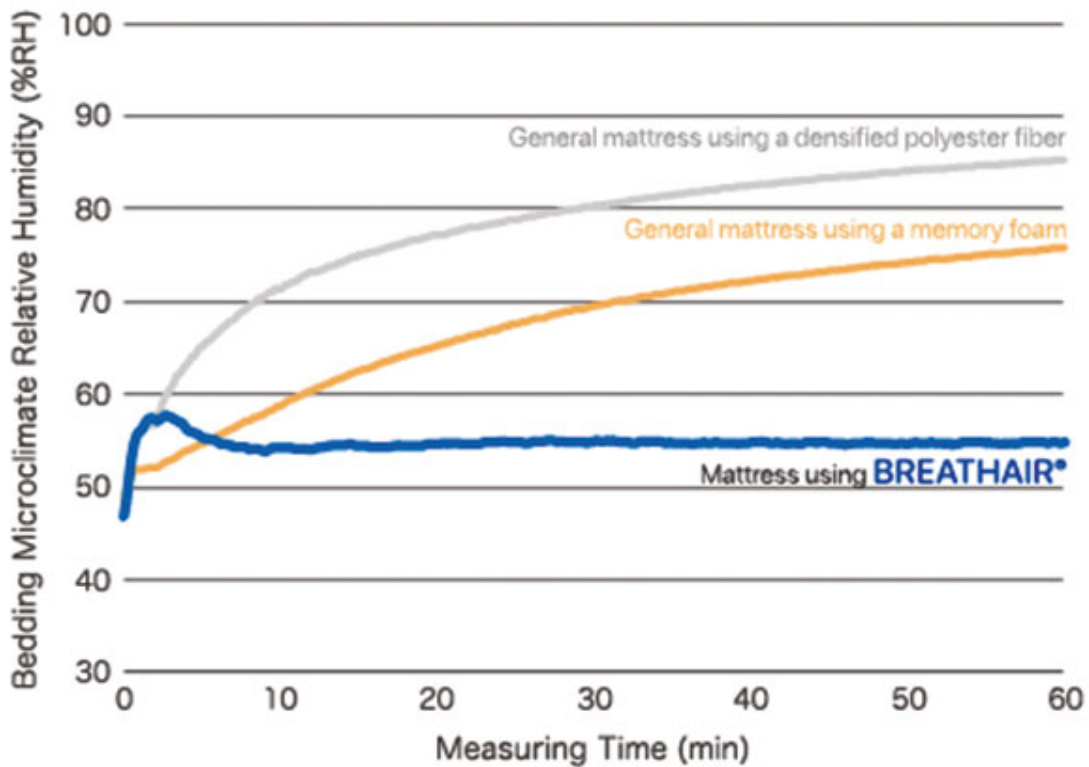
## Air Permeability

BREATHAIR® easily outperforms polyurethane foam and polyester fiber

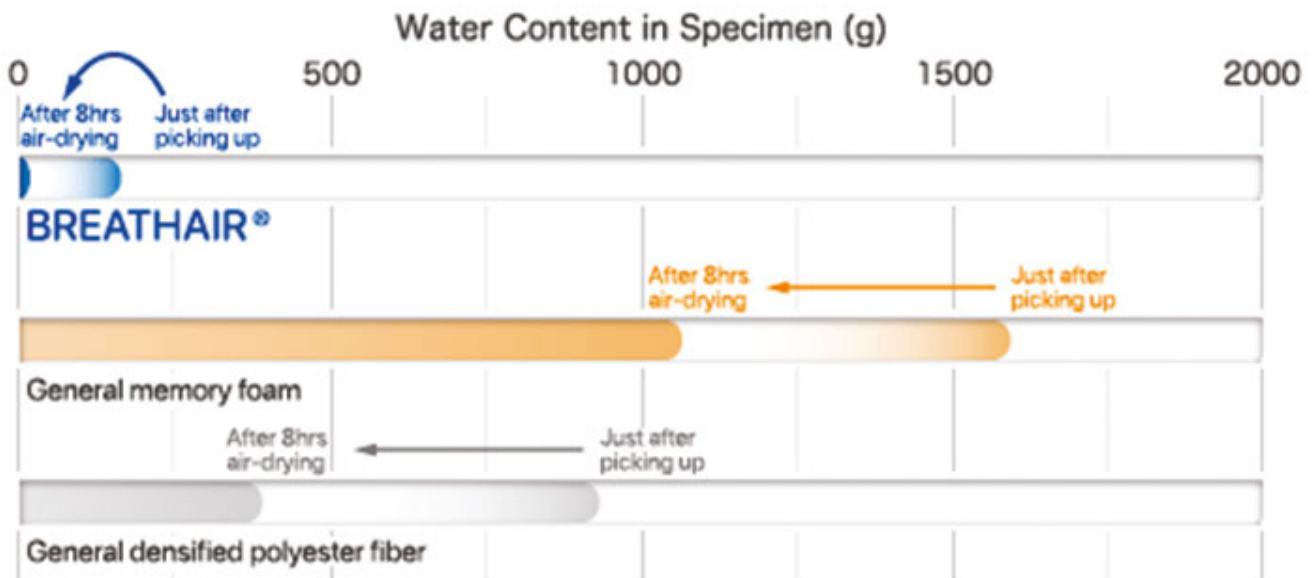
## Mattress Use

Toyobo uses its skin model method to measure the temperature and humidity between the sleeping body and the mattress.

These mattresses are cool in summer, and when wrapped in a mattress cover they can also retain heat and remain comfortable in winter.



※ Test Method : TOYOBO SKIN MODEL Method (Simulating the bedding microclimate during perspiration)  
 Heating plate 37°C , Amount of moisture supply 120g/m<sup>2</sup>·s , Test environment 20°C x 65%RH



※ Test Method : dipping a specimen (300 x 300mm) into water  
 → picking it up then air-drying it flat at 20°C 65%RH

## Water Draining & Anti-bacterial Properties

BREATHAIR® is quick to dry and is also washable. Polyurethane is still not dry 24 hours after becoming wet.

The structure of BREATHAIR® is made up of a series of continuous fibre loops and as such there is no fibre dust which means that it is difficult for bed mites to propagate. In addition, BREATHAIR® has excellent anti-bacterial functions as evidenced by BREATHAIR® meeting SEK standards. As BREATHAIR® is made from polyester-elastomers, even when it burns, the amount of toxic hydrogen cyanide gas released is small.

---

## Additional Information

Material	Pelprene®
Use	Interior & Exterior Application
Weight (kg)	0.400000
Manufacturer	Toyobo

---

## Product Options

Material Thickness (mm):	20.00
	40.00
	50.00
	60.00
	80.00

