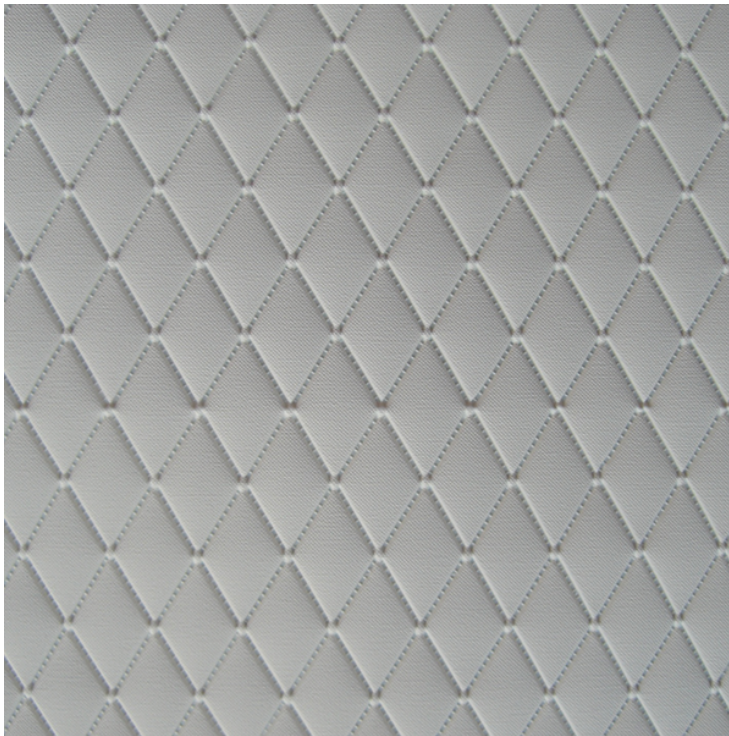




Heat Welding

Product Images





Short Description

Heat welding is an innovative process that can be applied to the majority of our vinyl products. Large tooling is used at a precise heat to imprint a pattern into vinyl materials without puncturing the surface of the material. The end result is an outdoor material with a quilting effect and no compromise on the product's original water resistance.

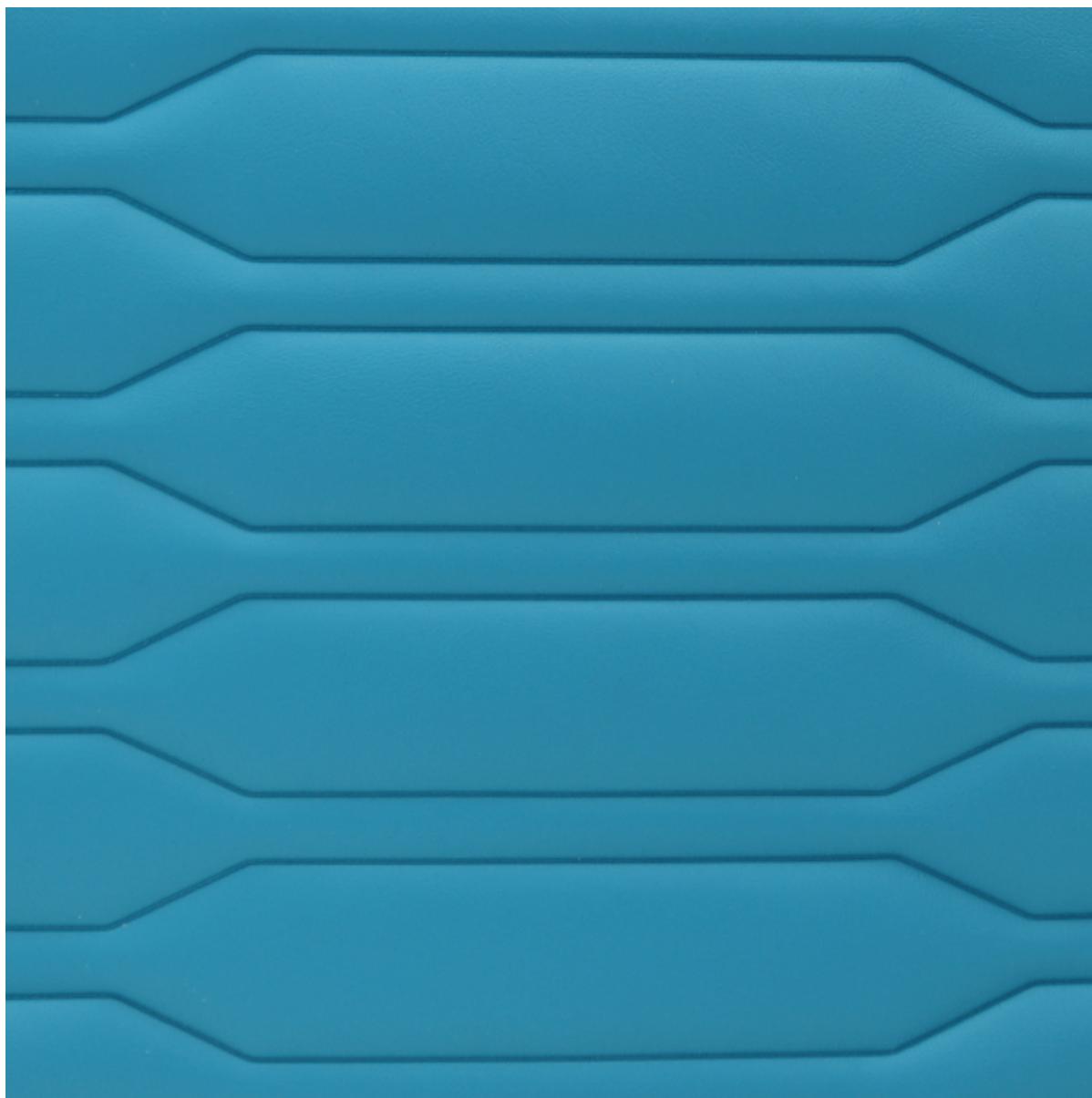
- Stunning 'quilting-like' effect for vinyls
- Does not puncture material surface - waterproof
- Choice of various standard patterns
- Choice of filling types for soft or firm feel

A minimum order quantity of 10 metres applies to this finish.

Description

Heat welding is a fantastic option for exterior cushions. These brilliant effects offer the look of quilted fabric but are completely waterproof as the surface of the material is never punctured. With a heat welded fabric, visible stretching of the material is much reduced and therefore 'sunken' or 'sagging' patches are avoided. Combine these welded effects with plain material for a mixture of textures and a high end finish.

The heat welded materials are sold per metre and delivered 140cm high rolls.



Q5

Vinyls

Artico
Caraibi
Carbon
Cervinia
Dream
Juta Mare
Levante
Nabuk
Navigator
Oasi
Oxford
Panama

Siena Bison
Sprite XL
Tropical

Max. distance between weld lines - 43.00mm

Min. distance between weld lines - 11.00mm

Repeat - 340.00mm

Filling Options - 80g m2 Leacryl (soft)

Welding Options - Plain weld and stitch effect weld



RS6

Vinyls

Artico
Caraibi
Carbon
Cervinia
Dream
Juta Mare
Levante
Nabuk
Navigator
Oasi
Oxford
Panama
Siena Bison
Sprite XL
Tropical

Distance between weld lines - 58.00mm

Repeat - 340.00mm

Filling Options - 80g m2 Leacryl (soft)

Welding Options - Plain weld and stitch effect weld



50mm x 50mm Squares

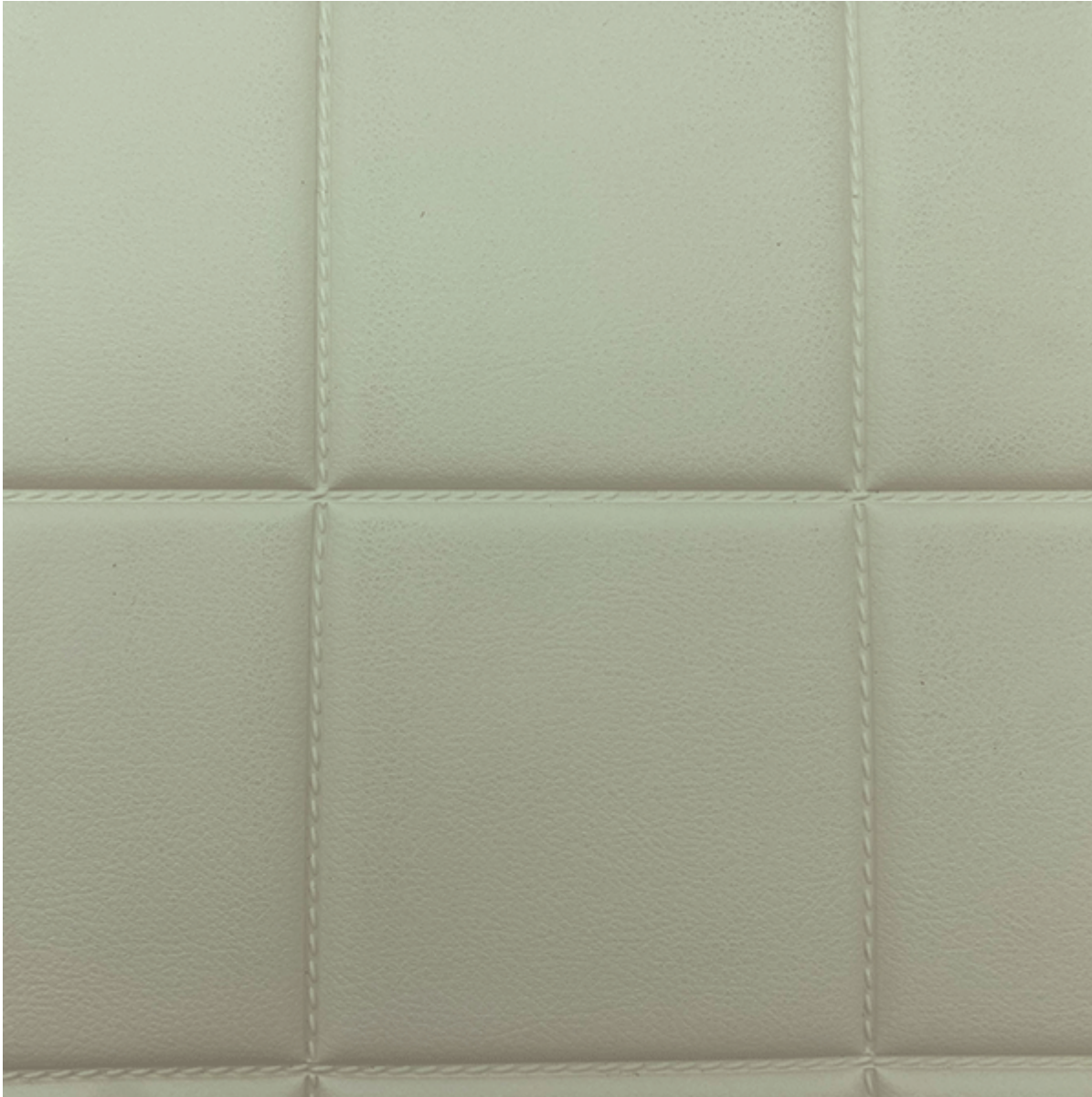
Filling Options - 80g m2 Leacryl (soft)

Welding Options - Plain weld and stitch effect weld

Vinyls

Artico
Caraibi
Carbon
Cervinia
Dream
Juta Mare
Levante
Nabuk
Navigator
Oasi

Oxford
Panama
Siena Bison
Sprite XL
Tropical



100mm x 100mm Squares

Filling Options - 80g m2 Leacryl (soft), 200g m2 Leacryl (medium), PVC in 4 or 6mm (firm).

Welding Options - Plain weld and stitch effect weld

Vinyls

Artico
Caraibi
Carbon
Cervinia

Dream
Juta Mare
Levante
Nabuk
Navigator
Oasi
Oxford
Panama
Siena Bison
Sprite XL
Tropical



120mm x 120mm Squares

Filling Options - 80g m2 Leacryl (soft), 200g m2 Leacryl (medium), PVC in 4 or 6mm (firm).

Welding Options - Plain weld and stitch effect weld

Vinyls

Artico
Caraibi
Carbon
Cervinia
Dream
Juta Mare
Levante
Nabuk
Navigator
Oasi
Oxford
Panama
Siena Bison
Sprite XL
Tropical



60mm x 60mm Oblique Squares

Filling Options - 80g m2 Leacryl (soft), 200g m2 Leacryl (medium), PVC in 4 or 6mm (firm).

Welding Options - Plain weld and stitch effect weld

Vinyls

Artico
Caraibi
Carbon
Cervinia
Dream
Juta Mare
Levante
Nabuk
Navigator
Oasi
Oxford
Panama
Siena Bison
Sprite XL
Tropical



100mm x 100mm Oblique Squares

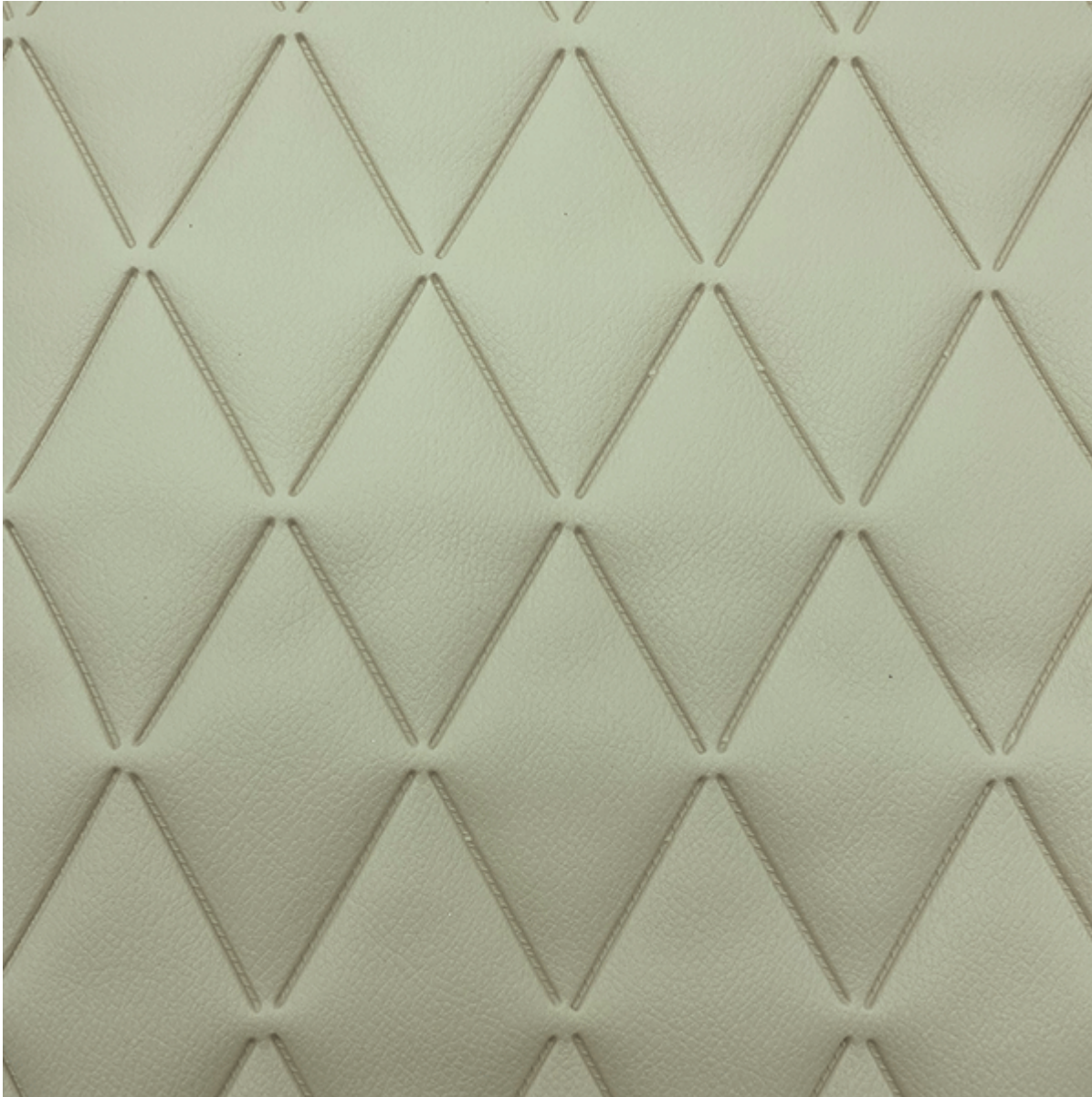
Filling Options - 80g m2 Leacryl (soft), 200g m2 Leacryl (medium), PVC in 4 or 6mm (firm).

Welding Options - Plain weld and stitch effect weld

Vinyls

Artico
Caraibi
Carbon
Cervinia
Dream
Juta Mare
Levante
Nabuk
Navigator

Oasi
Oxford
Panama
Siena Bison
Sprite XL
Tropical



80mm x 50mm Diamond

Filling Options - 80g m2 Leacryl (soft), 200g m2 Leacryl (medium), PVC in 4 or 6mm (firm).

Welding Options - Stitch effect weld

Vinyls

Artico
Caraibi
Carbon

Cervinia
Dream
Juta Mare
Levante
Nabuk
Navigator
Oasi
Oxford
Panama
Siena Bison
Sprite XL
Tropical



70mm x 50mm Double Diamond

Filling Options - 80g m2 Leacryl (soft)

Welding Options - Stitch effect weld

Vinyl

Artico
Caraibi
Carbon
Cervinia
Dream
Juta Mare
Levante
Nabuk
Navigator
Oasi
Oxford
Panama
Siena Bison
Sprite XL
Tropical



Stripe - 30mm / 40mm / 50mm / 60mm / 90mm / 120mm

Filling Options - 80g m2 Leacryl (soft), 200g m2 Leacryl (medium), PVC in 4 or 6mm (firm).

Welding Options - Plain weld: 30mm, 40mm, 60mm, 90mm & 120mm. Stitch effect weld: 30mm, 40mm & 50mm

Vinyl

Artico
Caraibi
Carbon
Cervinia
Dream
Juta Mare
Levante
Nabuk
Navigator
Oasi
Oxford
Panama
Siena Bison
Sprite XL
Tropical



Double Stripe (Tramline) - 80mm + 20mm

Filling Options - 80g m2 Leacryl (soft), 200g m2 Leacryl (medium), PVC in 4 or 6mm (firm).

Welding Options - Plain weld (some) and stitch effect weld (some).

Vinyl

Artico
Caraibi
Carbon
Cervinia
Dream
Juta Mare
Levante
Nabuk
Navigator

Oasi
Oxford
Panama
Siena Bison
Sprite XL
Tropical

Additional Information

Use	Interior & Exterior Application
Manufacturer	Italvipla

