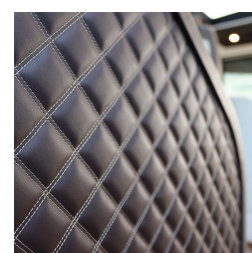
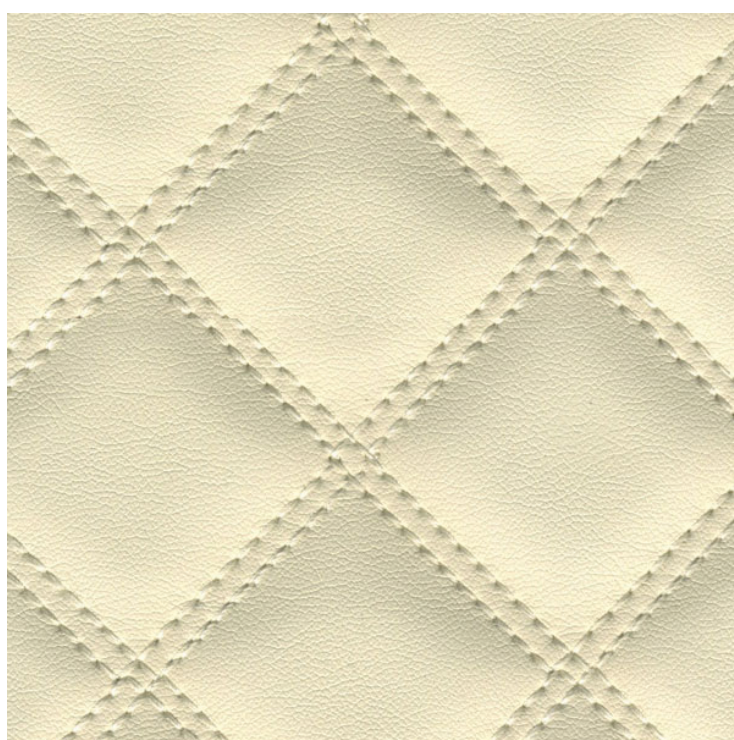




# Felix - PU Pre-stitched Fabric

## Product Images



## Short Description

Eco-leather fabric made up of soft polyurethane with a lightly stitched quilted padding forming small diamond-shaped patterns. Suitable for interior application on furniture and as a wall covering.

Felix is available in 7 classic colour/stitch combinations. On request, custom variations are available but minimum production quantities will apply (usually around 60 metres).

## Description

---

# Colour Chart



- Slight colour difference between different batches are possible. Italvipla and Timage reserve the right to update the colour range and to improve the technical properties of the product without notice.
- Special colours require a minimum of 500 metres
- **CLEANING INSTRUCTIONS** : Clean with mild soap and tepid water then rinse gently. Never use solvents, alcohol, steam cleaners, bleaches or aggressive detergents.

## Additional Information

---

Material	Polyurethane
Material Thickness (mm)	1.00 (+/- 5%)
Use	Interior Application Only
Weight (kg)	1.100000
Manufacturer	Italvipla

