



Domed Head Skin Fitting

From

£6.06

Excl. Tax: £5.05

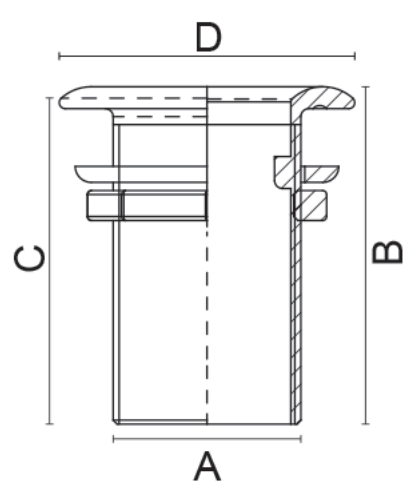
Product Images



Short Description

A pressure die cast brass domed head skin fitting. Available in a large number of dimensions and sizes in a polished brass or chrome plated finish.

Description



Product Code	A (BSP)	B	C	D
600C	3/8"	55	50	35
600D	1/2"	65	60	40
600E	3/4"	70	64	48
600F	1"	75	70	55
600G	1 1/4"	85	80	65
600H	1 1/2"	85	80	70
600I	2"	100	92	83
600L	2 1/2"	130	123	112
600M	3"	148	139	126

Additional Information

Manufacturer	Foresti & Suardi
Weight (kg)	0.080000

Product Options

Hose Connection:	3/8" BSP
	1/2" BSP
	3/4" BSP
	1" BSP
	1 1/4" BSP
	1 1/2" BSP
	2" BSP
	2 1/2" BSP
	3" BSP
Finish:	Chrome
	Brass

