



Lilly Dining Chair

Product Images



Short Description

Lilly by Frag Srl

The Lilly is a lightly padded chair with full leather or saddle leather upholstery, offering versatile style options. Its steel frame provides sturdy support.

The Lilly collection consists of chairs and stools, featuring traditional padding and meticulous attention to proportion, clean lines, and refined details, including ornate rear seams.

- Choice of Frag leathers or fabrics
- Fire-retardant foam padding
- Handmade in Italy

Description

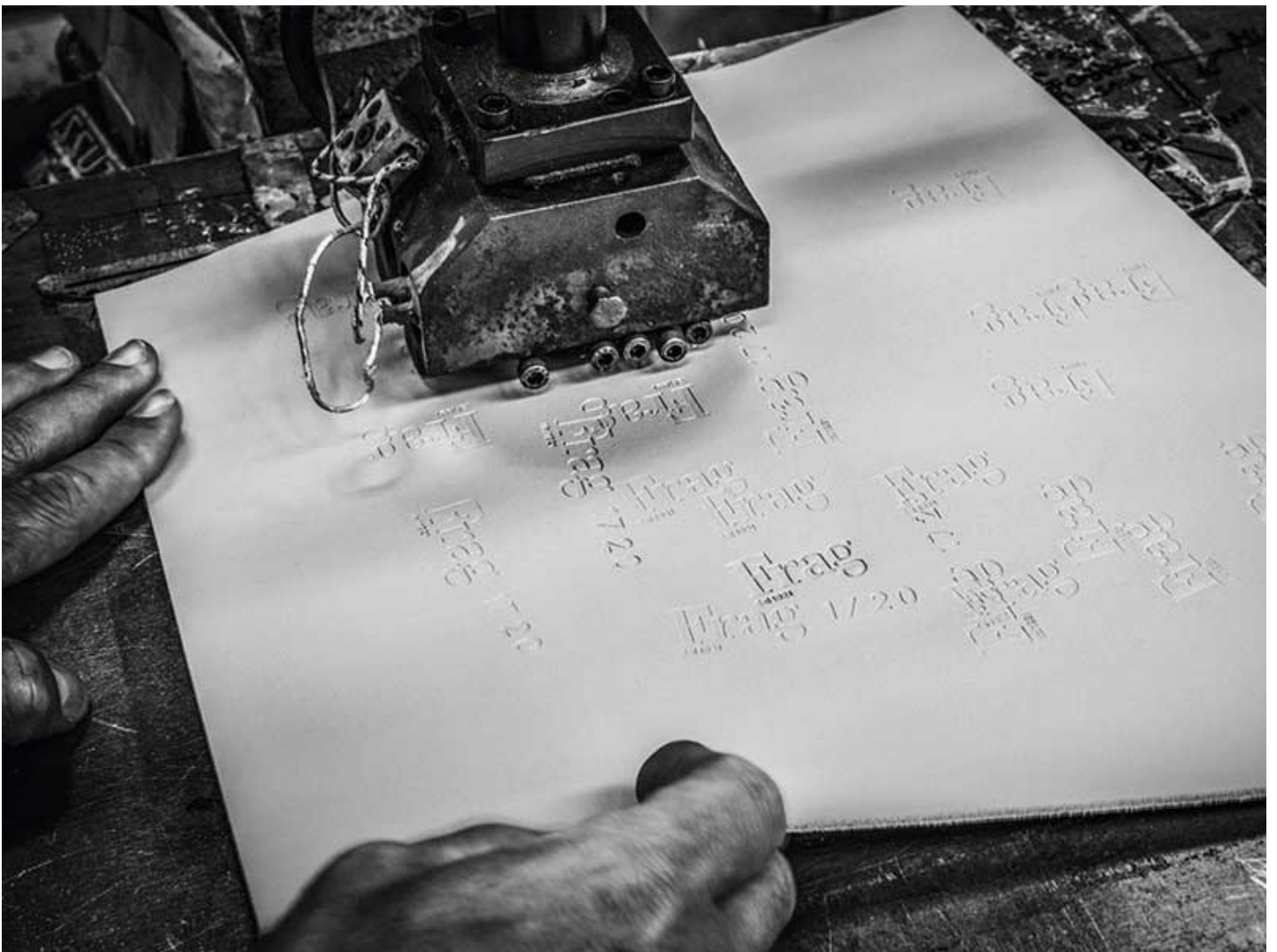


Frag Srl: Italian Excellence in Furniture Design

Frag Srl, renowned for its Italian craftsmanship, brings over 90 years of experience to the world of luxury furniture. Specialising in leather and high-quality materials, Frag combines traditional techniques with modern aesthetics to create timeless pieces that epitomise elegance and sophistication. Their dedication to innovation and design has established them as a leader in the furniture industry.

A Variety of Finishes and Upholstery for Every Taste

Frag Srl offers an extensive collection of furniture, including chairs, bar stools, armchairs, sofas, desks, and tables. Each piece is available in a wide variety of finishes and upholstery options, such as leather, saddle leather, fabrics, steel, and wood. This diversity means we can cater to various tastes and styles, ensuring every customer finds the perfect piece to complement their space.



Additional Information

Seat Height (mm)	480.00
Manufacturer	Frag
Weight (kg)	6.600000

