



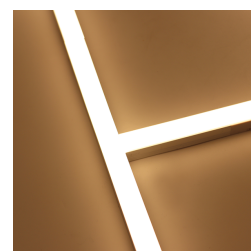
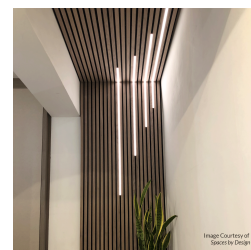
Click! - Modular LED Strip System

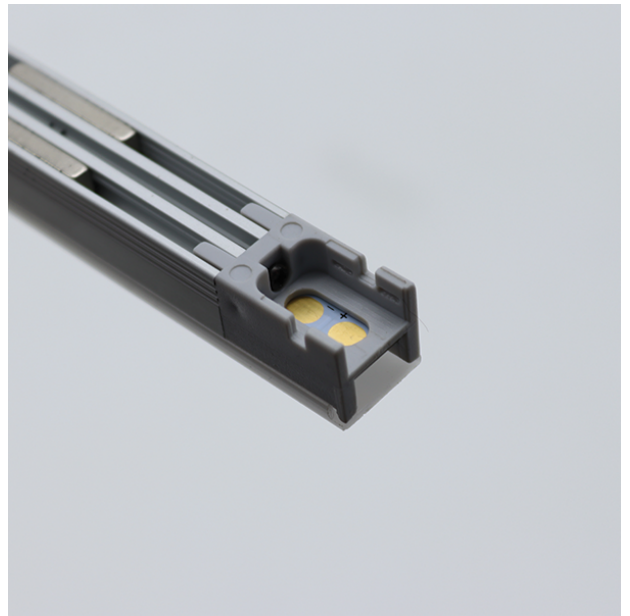
From

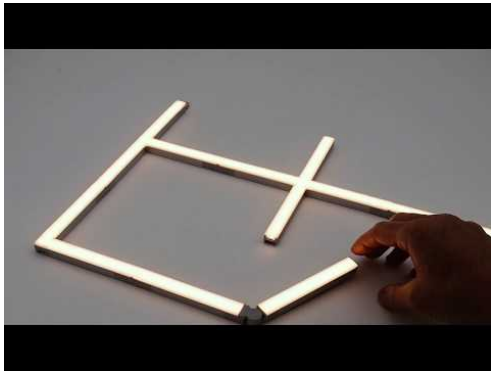
£13.49

Excl. Tax: £11.24

Product Images







Short Description

An innovative and effective strip lighting solution. The *Click!* modular strip LED system facilitates stunning LED strip designs by using pre-assembled components in various shapes. Straight lengths, 90° corner pieces, T and X shaped modules are all available.

At the heart of the *Click!* system is a 2835 type >90 CRI LED chip with an impressive output. The modular pieces have been specially designed in order to produce a continuous and dot-free light output, with no break in illumination.

- 24Vdc 2835 LED chip - 220 per metre
- >90 CRI (Colour Rendering Index)

- IP20 - for interior use only
- Opal diffuser
- Dot-free and continuous illumination
- Maximum 8 metres continuous run

Please ensure you visit the [Click! accessories](#) page to purchase any required connectors, mounting solutions or other parts for a complete installation.

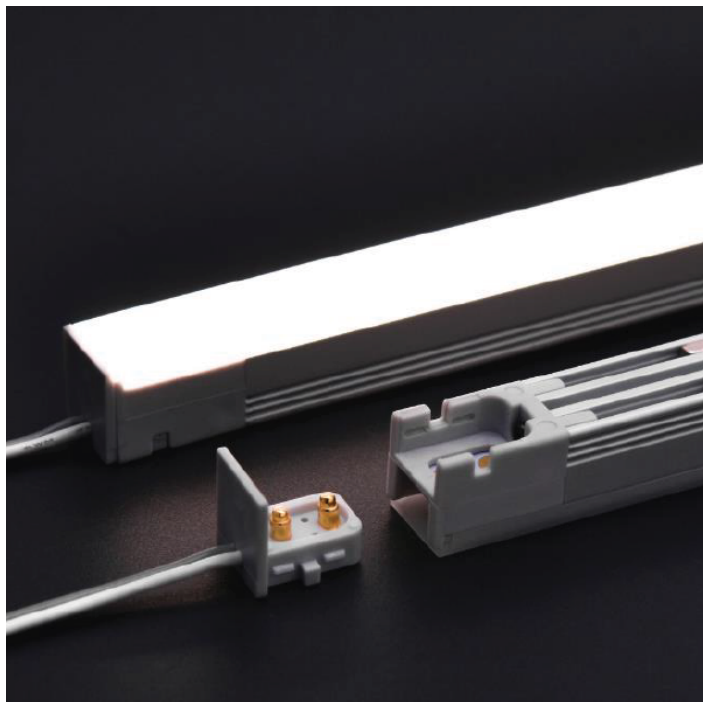
Description

Plug & Play

The *Click!* modular strip LED system is very simple to assemble and install. End caps can be easily removed with the special tool and junction connectors can then be used to fasten multiple modules together.

With *Click!*, a vast combination of designs can be brought to life without the need to cut, solder or worry about effective illumination at corners or junctions.

Visit our [Accessories](#) page to view the available connectors, fixing kits and other *Click!* essentials.



Continuous Illumination

The beauty of *Click!* is the seamless illumination across all junctions and between modules. The LED chip arrangement means that there is no break in the chip spacing, even at a junction point. The connectors cleverly feed power to the LED strips using contacts on the rear of the circuit boards, leaving space just for diodes.



Fixing Methods

Click! is magnetic. Each modular piece has magnetic pieces integrated into the aluminium chassis. This means that the product can be effortlessly held in place using the magnetic mounting plates. For those who want added security, a traditional mechanical fixing solution is also available with discreet brackets.



Creative Components

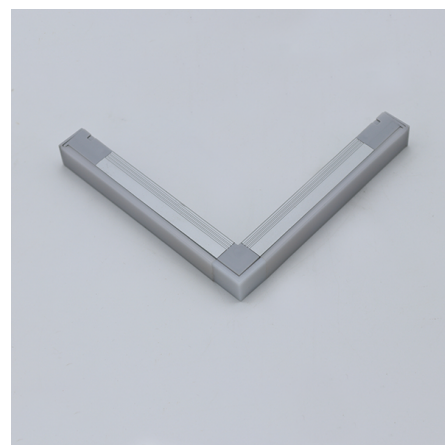
Click! features an excellent choice of components which come together to create your creative lighting design.



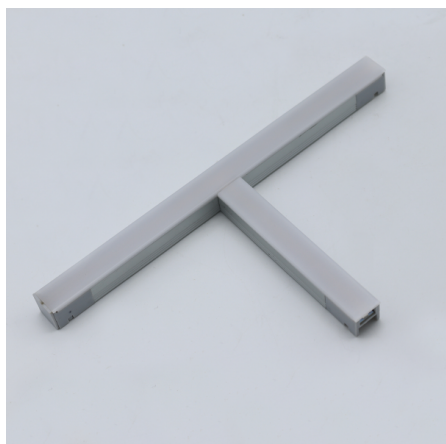
L Section - Side Lens



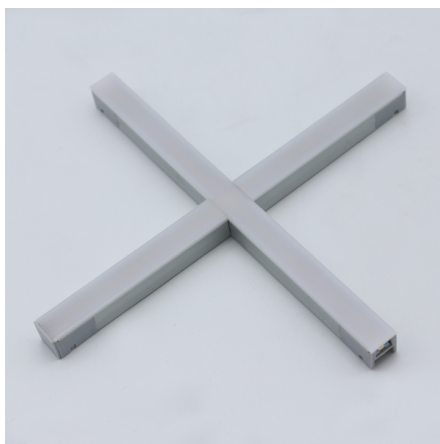
L Section - Top Lens



L Section - Bottom Lens



T Section



X Section

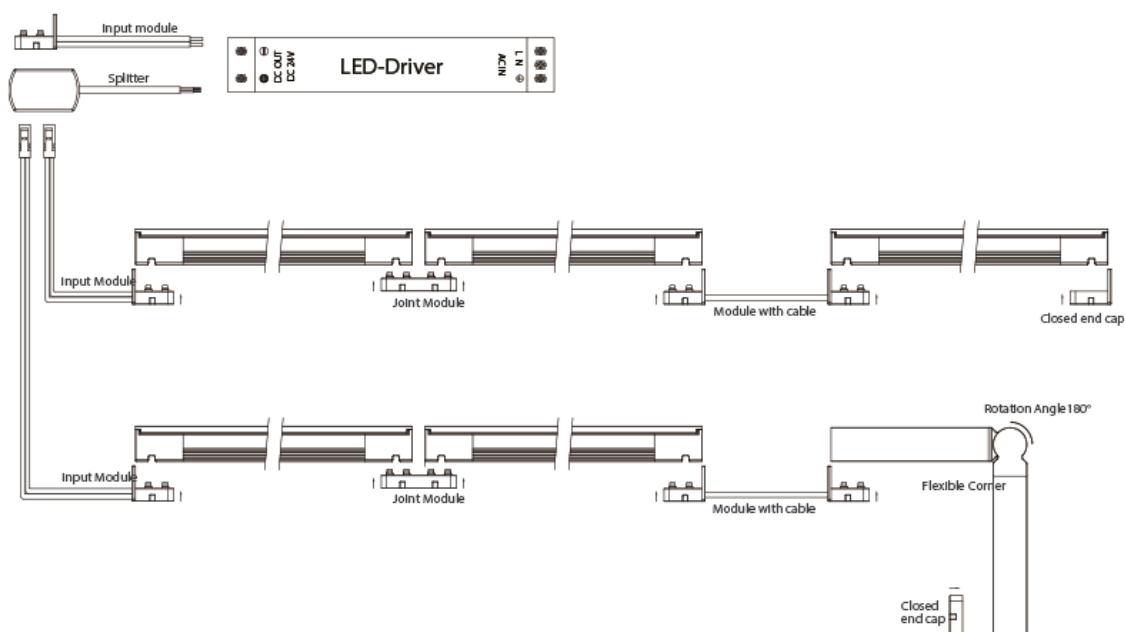


Straight Section - Various Lengths

For our range of connectors and accessories, please visit the *Click!* accessories page

CLICK! ACCESSORIES

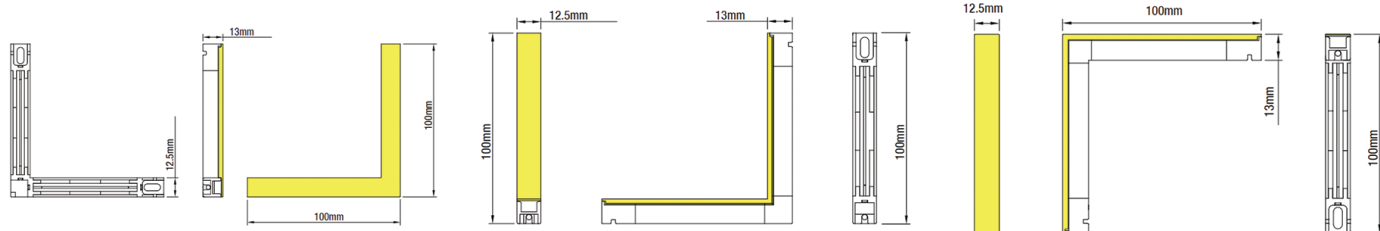
Wiring Example



Warning | Connector must be firmly inserted at both ends of the lamp. The maximum connection power of the same section is 100W

Drawings

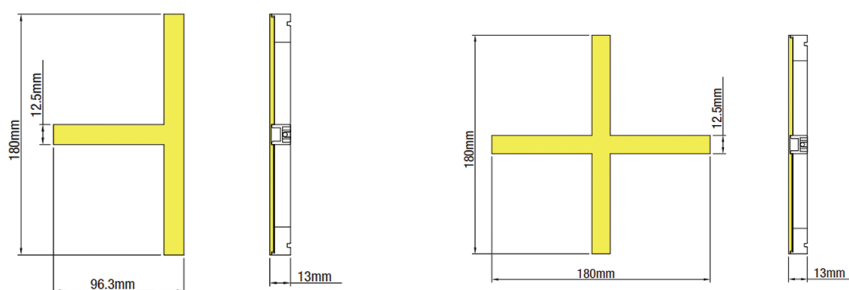
Please see the below technical drawings for each of the component parts.



L Section - Side Lens

L Section - Top Lens

L Section - Top Lens



T Section

X Section

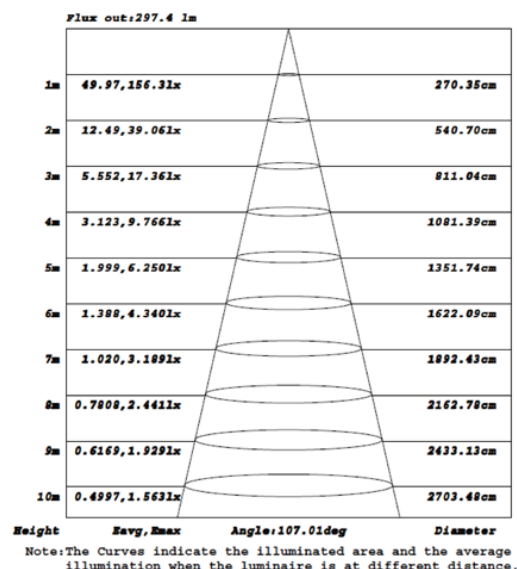
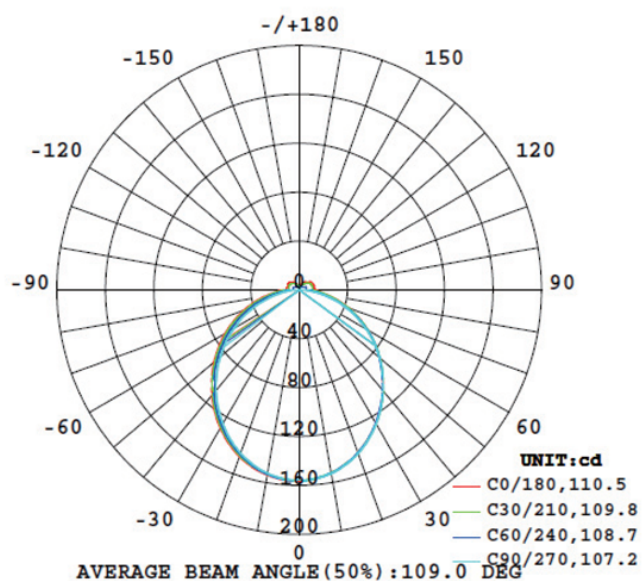
Video

297 Lumen

156 Lux at 1m

107° Angle

Below data recorded for 500mm length



Additional Information

Weight (kg)	0.020000
Light Element Type	SMD LED 12W/m
Lens Angle	120°
Depth (mm)	13.00
Width (mm)	12.50
Height (mm)	13.00
Input Voltage	24Vdc
IP Rating	IP20
Dimmer	Yes
LEDs Per Metre	220
CRI	>90
Operating Temperature Range (°C)	-25 ~ 45 °C
Strip LED Type	Rigid Aluminium Profile

Product Options

Component:	Straight Length 100mm
	Straight Length 200mm
	Straight Length 500mm
	T Section
	X Section
	L Section - Side Lens
	L Section - Top Lens
	L Section - Bottom Lens
	Rotating Section 180°
LED Colour:	White 3000°K

