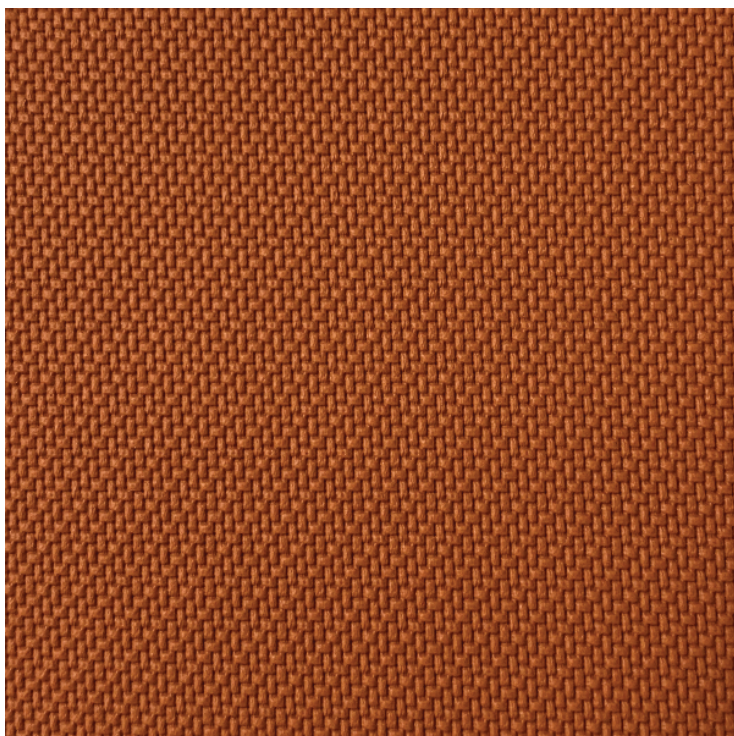




# Dream - Vinyl

## Product Images



## Short Description

A beautiful product that has a surprisingly similar texture to canvas. With *Dream* you can cover products across a truly extensive range of applications, giving results that are both extremely pleasing to the eye and particularly easy to maintain and clean.

The technical characteristics are among the best on the market today for any outdoor vinyl fabric, placing it in the medium-high end product sector. It is formulated without harmful chemicals and does not contain solvents or phthalates. It has a high resistance to abrasion, fungus and bacteria and meets the broadest fire

resistance standards. *Dream* is certified to IMO-MED.

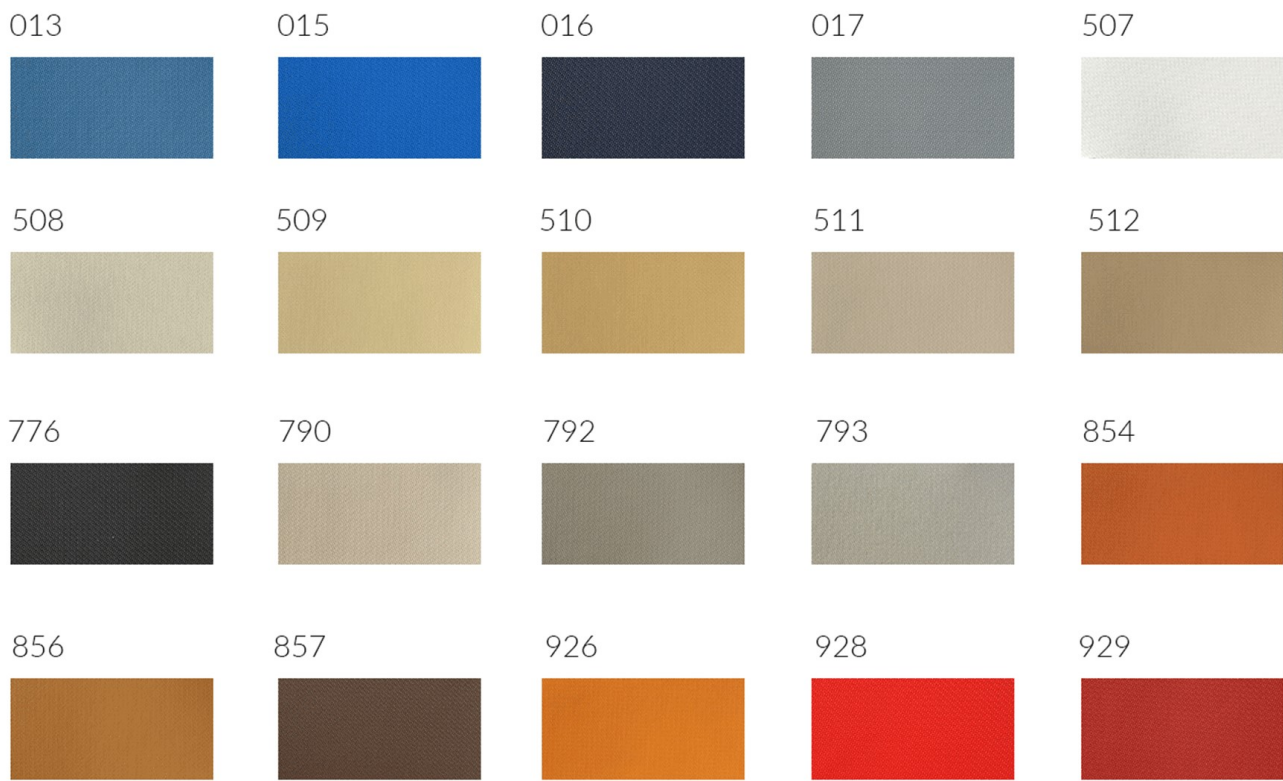
*Dream* vinyl is sold and priced per metre with a minimum order quantity of 5 metres.

## Description

---

- [Colour Chart](#)
- [Backing Options](#)
- [Quilting and Welding](#)

## Colour Options



## Foam Backed Material

Dream is also available with various laminated finishes such as foam backing. This process can be applied to orders of 15m or more. The following lamination options are available:

- 3mm foam backing
- 3mm foam backing + felt

- 3mm foam backing + cloth
- 5mm foam backing
- 5mm foam backing + felt
- 5mm foam backing + cloth

# Quilting and Electrowelding

A high-frequency electrowelding machine is used to process artificial leather and apply a soft layer of needle-punched polyester (called leacryl) and a third thin PVC layer that protects the padding from moisture and dirt. The resilt is a pleading 'quilted' product that can be used also for covering cushions outdoor since the external fabric has not been punched and is therefore completely waterproof. The same pattern is also available on request with the internal PVC padding of a thickness of 4-6mm, which is more compact and resistant. Comes in various patterns with grooves of 3, 4, 5, 6, 9, 12 and 20mm wide, squares of 5, 10 and 12mm and 2 types of diamond-shaped pattern.

- Slight colour difference between different batches are possible. Italvipla and Timage reserve the right to update the colour range and to improve the technical properties of the product without notice.
- Special colours require a minimum of 500 metres
- CLEANING INSTRUCTIONS : Clean with mild soap and tepid water then rinse gently. Never use solvents, alcohol, steam cleaners, bleaches or aggressive detergents.

## Additional Information

Material	PVC
Material Thickness (mm)	1.10 (+/- 0.1)
Use	Interior & Exterior Application
Weight (kg)	1.100000
Manufacturer	Italvipla

