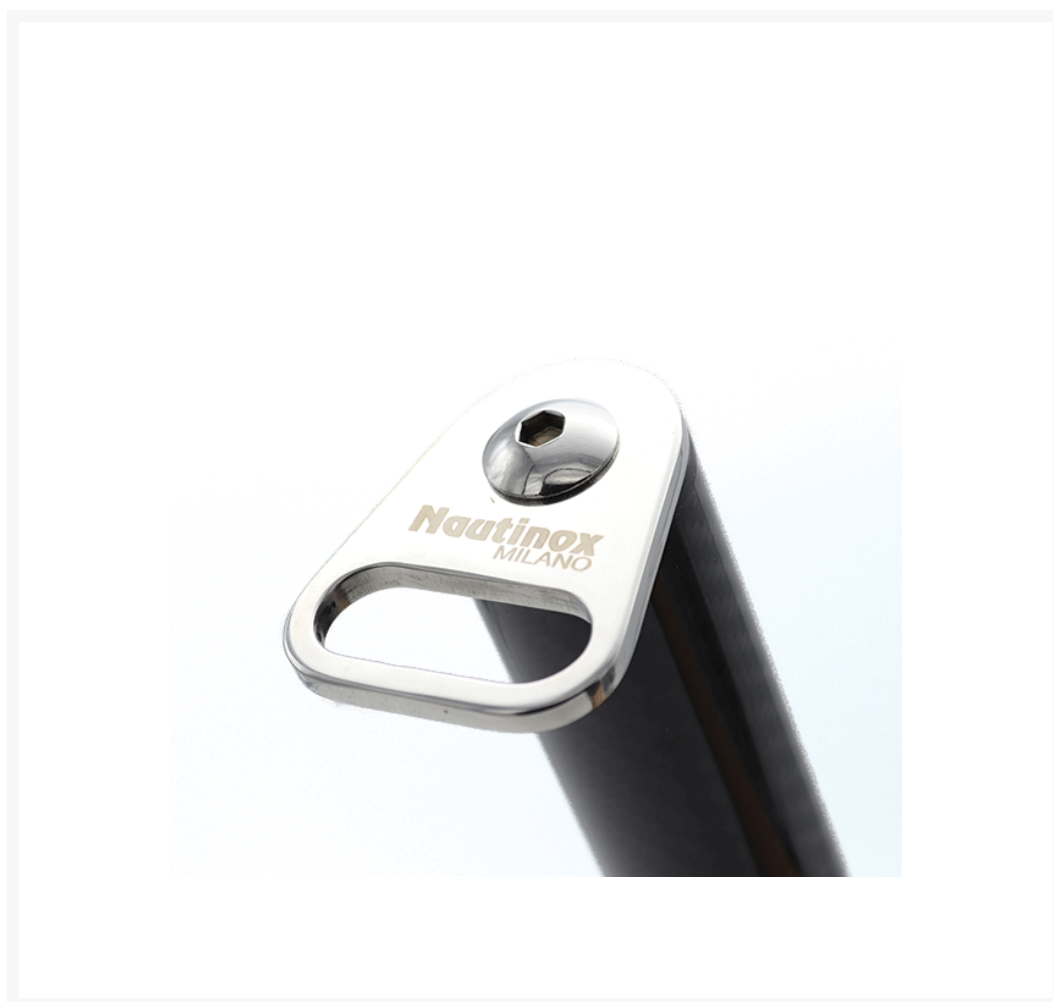


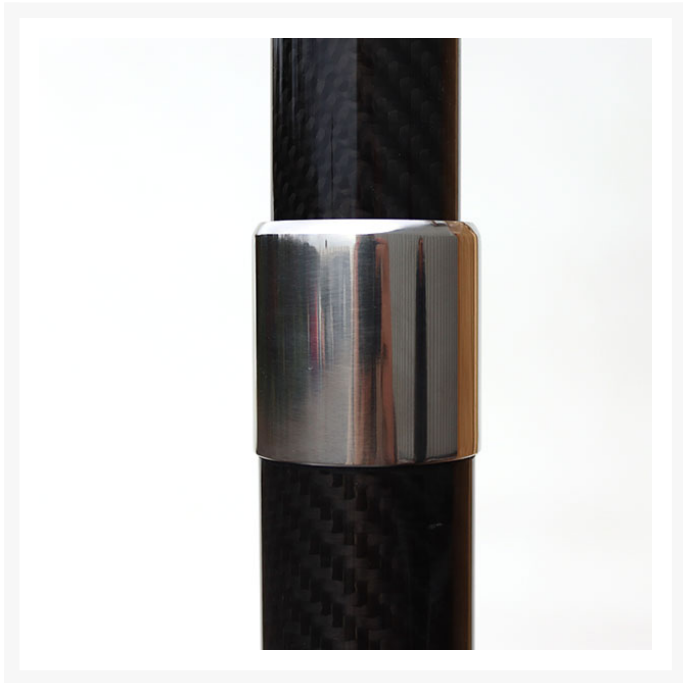
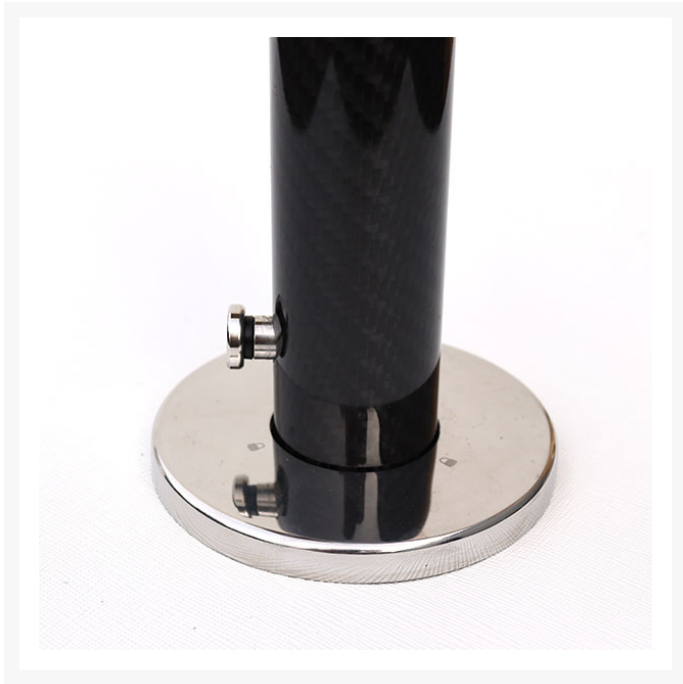


S38 Telescopic Carbon Fibre Sun Shade Kit - Eyelet

From
£1,072.04
Excl. Tax: £893.37

Product Images







Short Description

Removable carbon fibre sun awning kit, including a carbon fibre pole and S38 stainless steel deck socket.

- Black gloss, carbon fibre pole, that can be adjusted from 1250mm to 2000mm.
- Fabric simply fastens to the pole with a hook and eye.
- Self-locking base with patented trigger release action.
- Straight or inclined S38 base socket.

Sun shade fabric not supplied.

Description

Awning Pole

Ø38mm carbon fibre pole for sun awning systems designed for use on yachts. The carbon fibre pole is finished with a gloss lacquer and is telescopic, adjustable from 1250mm to 2000mm.

Fabric is simply fastened to the pole with a hook and eye. The pole can be used in any number of configurations together with other poles.





Base Socket

The innovative patented socket features a self-rising lid design. No need to screw and unscrew a lid, just simply push to pole straight into the socket and release with a spring loaded button installed on the base of the docked accessory. The socket also features a drain, allowing any water that enters to be sent straight to the bilge.

The S38 base socket is available with a straight insert and visible fixing combination only.

Additional Information

Cut-out Size (mm)	Ø54.00
Weight (kg)	1.200000
Manufacturer	Nautinox
Pole Diameter	38.00
Finish	316 Stainless Steel & Gloss Carbon Fibre

Product Options

Socket Type:	Straight Socket, Visible Fixings
	Straight Socket, Hidden Fixings
	Inclined Socket 6°, Visible Fixings
	Inclined Socket 6°, Hidden Fixings

