



M1 Marine 6.5" Full Range Speakers - ColorOptix™ - White

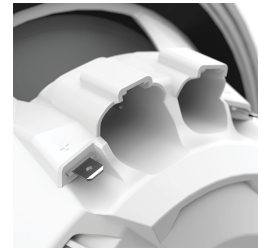
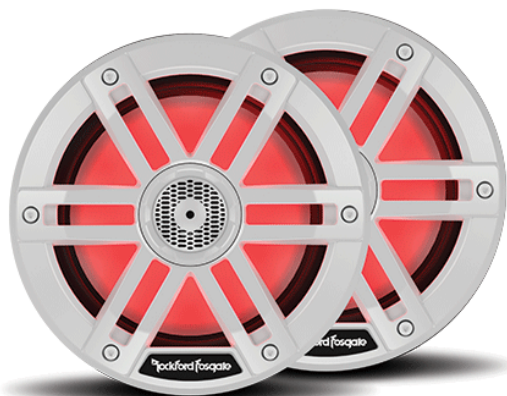
Regular Price

£297.24 Special Price

£208.07

Excl. Tax: £173.39

Product Images



Short Description

The M1-65 Color Optix™ 2-way 6.5" speakers deliver loud, clear, accurate sound, and light the way for your journey! The speakers connect with the Rockford Fosgate Color Optix™ Controller and RF Connect App, allowing you to customize your own colour patterns. The Element Ready™ design and IP67 certification makes them truly purpose-built for marine or motorsport applications where protection from damaging UV rays and water spray is essential.

Description

The M1 series of Element Ready™ speakers are designed to pair with the Rockford Fosgate Color Optix™ Controller and RF Connect App through its Deutsch™ and Amphenol™ connectors integrated into the speaker. This combined with their IP67 certification make these speakers Element Ready™ and truly purpose built for marine applications. To complete your sound experience, the M1 speakers are complimented by 8-inch, 10-inch and 12-inch subwoofers, also controlled through the Color Optix™ lighting system.

- Optically clear UV stable RGB Lighting Encapsulation
- Multiplexed RGB Input
- Ultra-Bright, Wide Angle Tri-Colour Surface Mount LED's with Flat Mould Lenses
- Grill Integrated 1" (25 mm) LCP Balanced Dome Tweeter
- 1" (25mm) High Temp Kapton™ Woofer Voice Coil Former
- Sealed motor design
- 100% UV Stable ASA plastic frame & grille design stands up to harsh marine environment
- Zinc Nickel-plated Marine grade brass connection terminals
- Proprietary Dual Function Input Terminals
- Integrated Deutsch RGB and Speaker receptacles
- Linear Synthetic Fibre Blend Spiders
- Santoprene VAST Surround
- VAST vertical attach surround technique increases effective radiating cone area up to 25%
- Co-moulded surround and mineral filled polypropylene cone body
- 6dB/Octave crossover network
- Fully sealed integrated concealed crossover (ICC) network
- 2-Year Warranty

Additional Information

Weight (kg)	2.250000
Manufacturer	Rockford Fosgate
Finish	White
Speaker Type	2-Way Coax
Speaker Size	6.5"
Speaker Impedance	4-Ohms
Crossover	High-Pass (HP): 6dB/Octave
Power Handling (Watts RMS)	75 Watts RMS 300 Watts Peak
Tweeter Size	1.0" (25 mm)
Recess Diameter (mm)	136.15
Depth (mm)	63.18
Speaker Input Connector	Deutsch™
IP Rating	IPX6
SPL (dB @ 1w/1m)	90.00

