

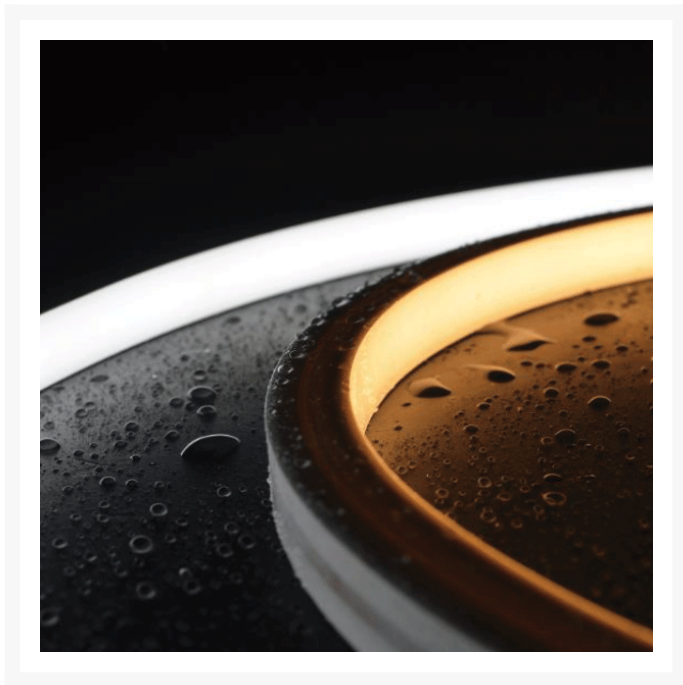
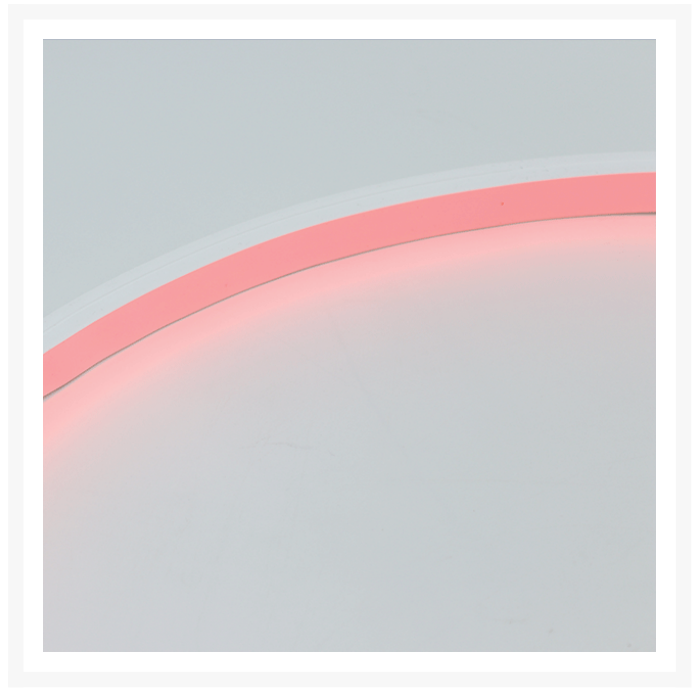
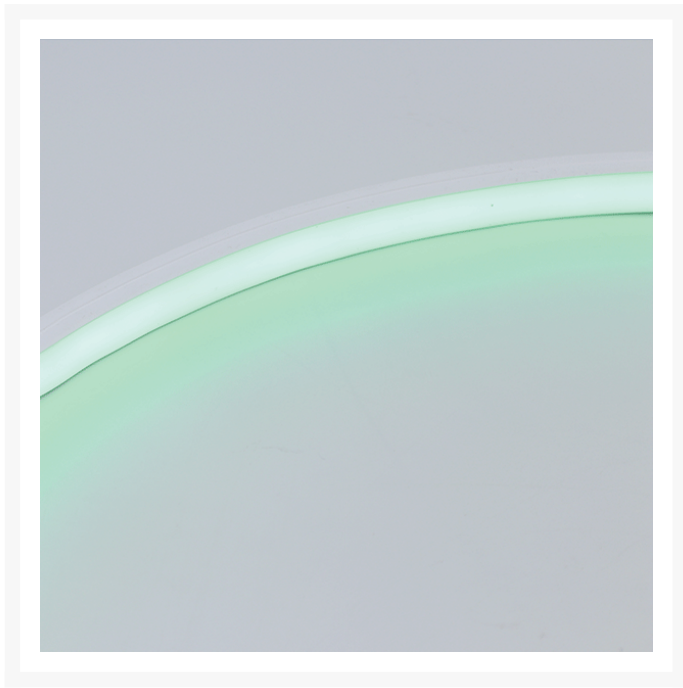


# Constant Current Silicone Super Long Neon Flex LED Strip - Top View

## Product Images







## Short Description

---

Super long neon effect LED strip light with single colour output. High power output with 16mm x 15mm housing. This LED strip can be used in lengths up to 28 metres without any drop in performance even when powered from a single end\*.

- IP67 rated casing with IP67 connectors and end caps (either DIY style or injection moulded)
- Long lengths of up to 28 metres can be powered from a single end
- High quality silicone housing offers excellent anti-yellowing characteristics. The material is also non-corrosive and has a high acid resistance
- Uniform neon light output
- 120° beam output

- White in choice of 2100°K to 6000°K
- Available in static colours such as blue, red, green, yellow, amber and pink
- Available in tunable white (adjustable from warm to cool white >90 CRI)
- 2 year warranty
- Dimmable with Dali, DMX, PWM
- Top view light output - flex in the same direction of light
- Custom made to order in specified lengths

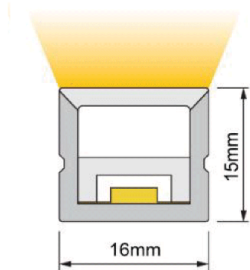
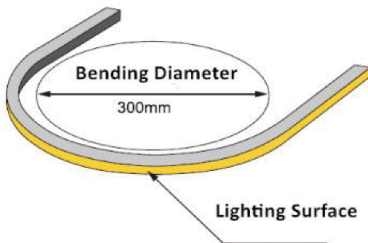
*\*28 metres lengths in 5 Watt per metre version only. 10 Watts per metre max. run is 15 metres and 15 Watts version max. run is 10 metres.*

## Description

### THE PROFILE

Our neon effect LED strip is the perfect solution for interior or exterior application where a high level of waterproofing is required. The IP67 rating of the product means that it can be installed in wet locations and is suitable for exterior use. The product has a high resistance to dust ingress and offers a strong resistance against solvents, saltwater and UV light.

The top view product is flexible in the same axis as the lens which means that it can be installed in applications where it must follow a certain radius as well as in straight lengths. This neon profile is made from silicone which offers an excellent light output and attractive milky white lens when off.



### Specification

The super long neon flex top view product is available in a large number of colour temperatures and power outputs. The table below shows the variations available.

Colour Temperature (K)	Cutting Unit (mm)	CRI	Power (W)	Lumen (Lm/m)	Efficiency (Lm/W)	Max Length (m) -Powered single end
2100 +/- 100	50	>90	5	270	54.0	28
			10	495	49.5	18
			15	675	45.0	15

2400 +/- 100	50	>90	5 10 15	275 525 705	55.0 52.5 47.0	28 18 15
2700 +/- 100	50	>90	5 10 15	320 580 765	64.0 58.0 51.0	28 18 15
3000 +/- 100	50	>90	5 10 15	300 560 750	60.0 56.0 50.0	28 18 15
3500 + 200 / -100	50	>90	5 10 15	300 575 765	60.0 57.5 51.0	28 18 15
4000 + 300 / -200	50	>90	5 10 15	350 665 915	70.0 66.5 61.0	28 18 15
5000 + 300 / -200	50	>90	5 10 15	350 685 930	70.0 68.5 62.0	28 18 15
6000 + 400 / -100	50	>90	5 10 15	350 675 935	70.0 67.5 62.3	28 18 15
Tunable White 2200+6000	50	>90	Combined - 15 Combined - 10	765 555	51.0 55.5	5 5

Static colours and RGB versions are also available

## COLOUR TEMPERATURE

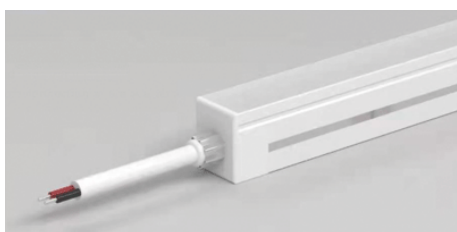
The neon LED strip is available in a number of colour temperatures to suit any project along side a choice of static colours. Colour temperature is important as it greatly affects the ambience of a space depending on whether a warmer or cooler output is chosen. Colour temperature is recorded in Kelvin. The higher the Kelvin, the cooler the output. Our useful colour temperature chart below will help guide you.





## CONNECTORS

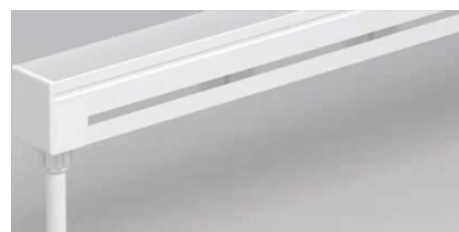
Both injection moulded and DIY plastic end connectors are available for this type of neon flex strip light. The product can be supplied with a straight end connection, bottom connection or side connection, all with an IP67 rating.



Injection-moulded end connection



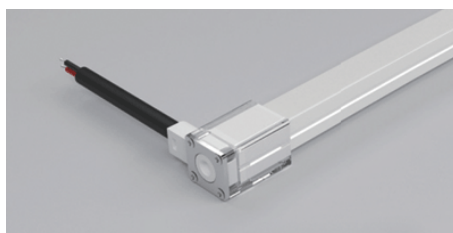
Injection-moulded side connection



Injection-moulded bottom connection



DIY screw fit end connection



DIY screw fit side connection



DIY screw fit bottom connection

## INSTALLATION

The neon top view product can be quickly and simply installed using one of the compatible aluminium mounting tracks or clips. With a self-locking design, the extrusion can be screwed into position and then the strip LED is simply pushed into place.

The compatible U channel for this 1615 top view product measures 14.4mm x 21.3mm x 50/1000mm.



Standard self-locking U channel - anodised aluminium - 50mm or 1m lengths

# Additional Information

Weight (kg)	0.140000
Light Element Type	SMD LED
Material	Silicone
Lens Angle	120°
Width (mm)	16.00
Height (mm)	15.00
Input Voltage	24Vdc
IP Rating	IP67
Dimmer	Yes
CRI	>90
Cutting Intervals (mm)	50.00
Lumens Per Watt (Lm)	60.00 (average)
Luminous Flux (lm/M)	270 - 935
Operating Temperature Range (°C)	-25 - +45
Strip LED Type	Flexible Neon

