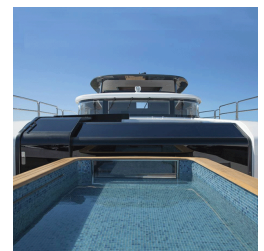
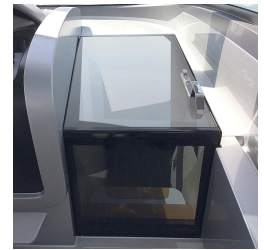
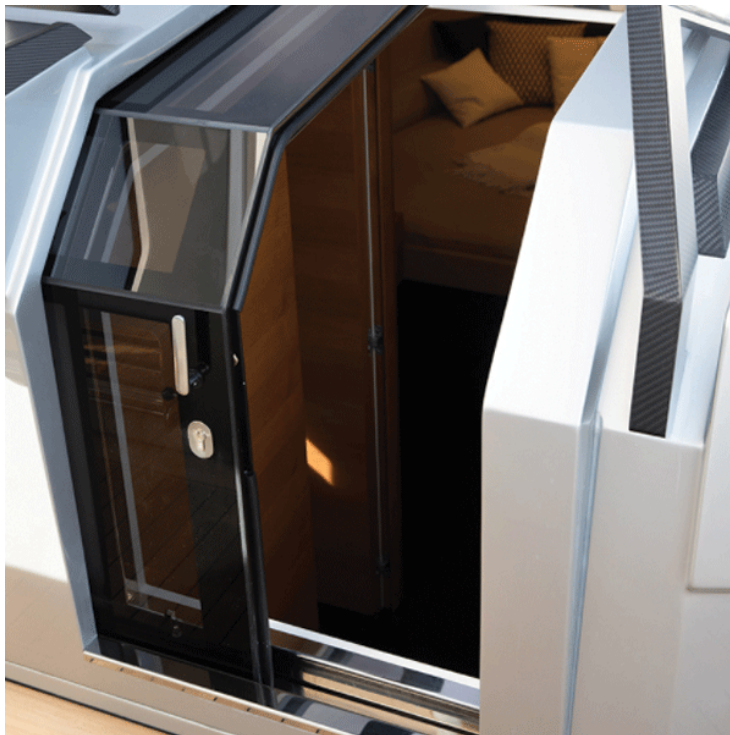


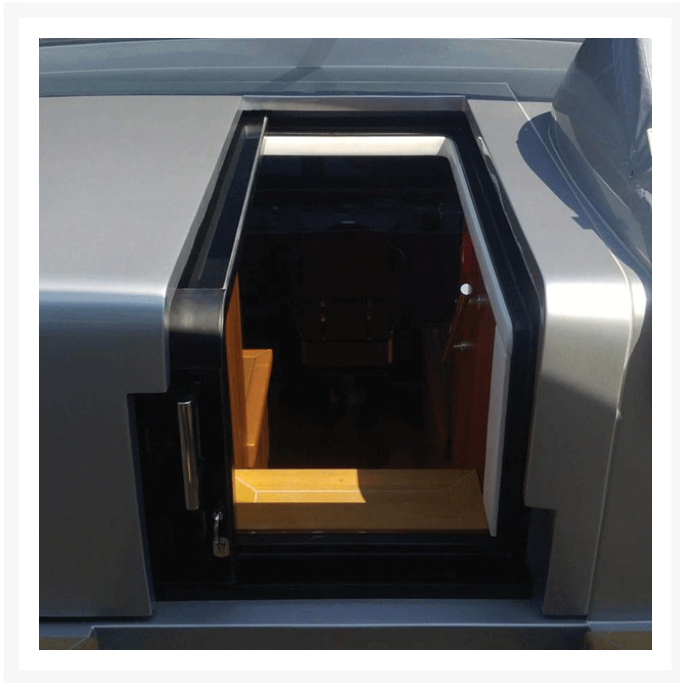
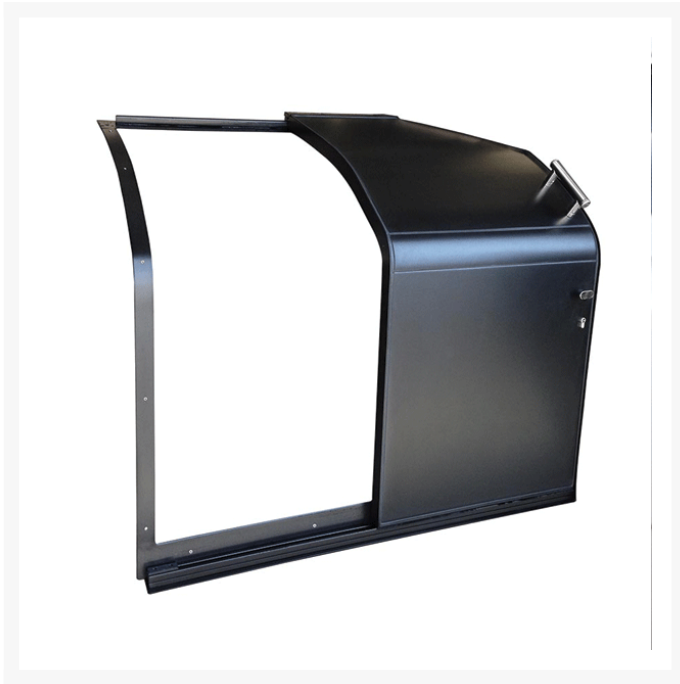


Companionway Door

Product Images







Short Description

Sliding companionway door made from aluminium with or without stainless steel details. These are completely customisable and manufactured to our client's specification. Working closely with an architect or design studio, we are able to produce the door to almost any design, either with manual or automatic (electric) operation.

Standard specification includes:

- Powdercoated aluminium frame and counterframe
- Manual operation
- Stainless steel (316) handles and lock

- 8mm thick glass
- Weathertight
- Silicone polymer gasket
- Single or double leaf

Options such as incorporated sensor to alert when the door is open and other features available on request.

Description

